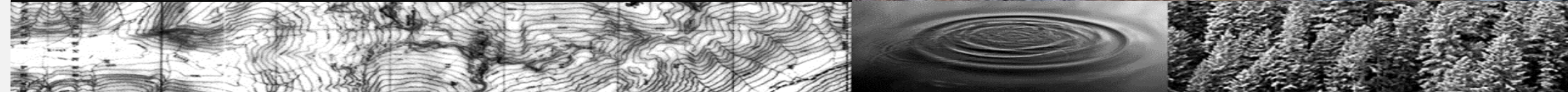


Coastal Conservation Corps

Proposal for Jobs in Restoration and Resiliency



Jill Silver, 10,000 Years Institute



An aerial photograph of a wide, braided river system flowing through a dense, green forest. The river channels are light-colored, likely due to sand or silt, and are interspersed with patches of green vegetation and yellow wildflowers. In the background, rolling mountains are visible under a blue sky with scattered white clouds.

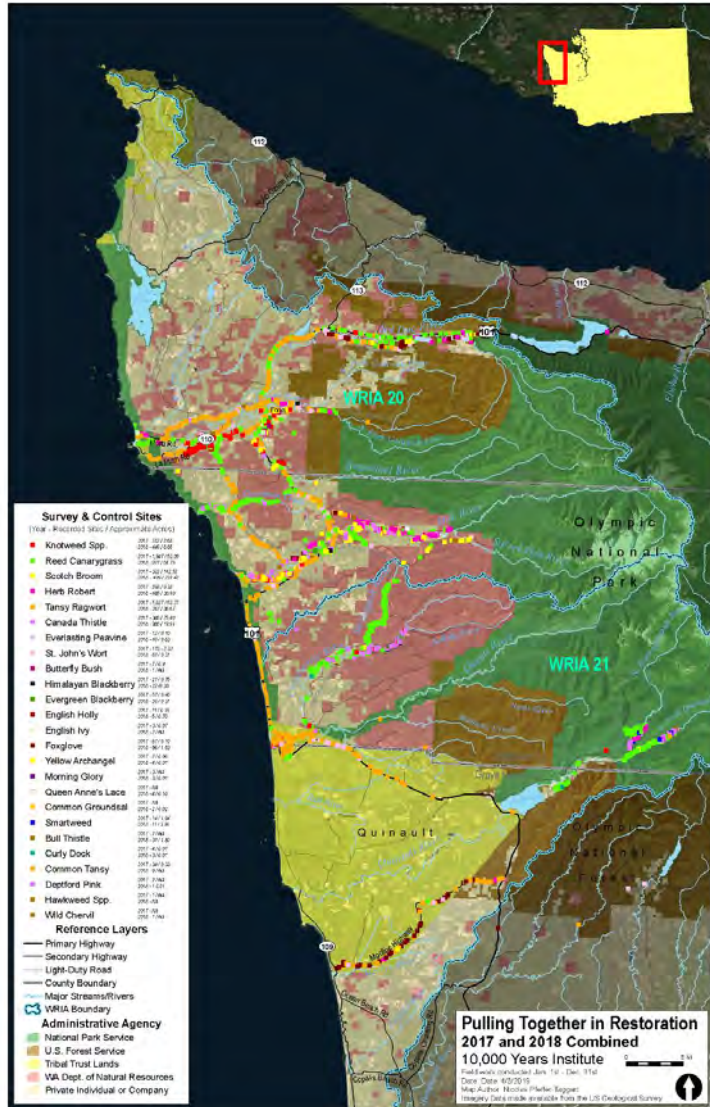
About Us

At 10KYI, we evaluate the effects of human activities on natural environments – the forests, rivers, wetlands and estuaries that sustain our communities and ecosystems.

Through development of innovative, science-based approaches to restore ecological integrity, we promote sustainable practices in landscapes across the region.

WCRRI: 10KYI's *Pulling Together* in Restoration Project

Preventing the spread of invasive species in coastal watersheds, providing training and local jobs for local work



10,000 Years Institute

Challenges



Rural Communities Need Jobs, Training, & Housing



The COVID pandemic, lack of training opportunities, and the loss of forestry and fisheries jobs in rural coastal communities has led to increased unemployment, under-employment, and migration from rural areas to cities.

Challenges



Declining Forest Health



Forests need thinning and invasive plant management to increase understory plant growth, grow trees faster, and improve habitat quality.

Challenges

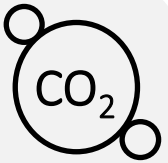


**Wildfire
Risk**



Invasive Scotch broom and overly dense stands increase wildfire intensity and severity.

Challenges

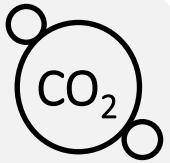


Waste & Energy Management

Rural communities on the coast face high costs for transportation of goods and services, and many challenges for waste management.



Challenges



**Carbon,
Methane,
& PM
Emissions**



Slash pile burning emits carbon dioxide, methane, and particulates - contributing to climate change, ocean acidification, and sea level rise – and impacts to human health.

Opportunities and Solutions



Coastal Conservation Corps

Provide permanent year 'round place-based jobs



Biomass Optimization Center

Convert waste to products, biochar and energy



Coastal Conservation Corps

A permanent place-based Conservation Corps is the next logical step...

Matching local skilled experience with local youth-in-training in work that supports coastal economies.



Coastal Conservation Corps

A Coastal Conservation Corps will focus on critical and under-funded resource management tasks



Photo by: CSIRO



Photo by: Wild Salmon Center/Trout Unlimited



Forestry

- Forest thinning
- Young stand thinning
- Biomass for biochar
- Wildfire fuels reduction
- Invasive species:
 - Scotch broom
 - Reed canarygrass
 - Herb Robert

Marine

- Marine debris collection
- Invasive species:
 - European green crab
 - Spartina
 - Scotch broom
 - Gorse

Restoration

- Road maintenance
- Restoration project support
- Native plant revegetation
- Invasive species:
 - Scotch broom
 - Reed canarygrass
 - Herb Robert

Recreation

- Trails
- Facilities maintenance
- Bunkhouse construction for crews
- Invasive species:
 - Herb Robert

Coastal Conservation Corps

Invasive plant management supports clean gravel, forests, roads, and property values

Gravel mines



Coastal Conservation Corps

Invasive plant management on roads - roads act as pathways for 'propagules'...



Gravel mines



Roadsides

Coastal Conservation Corps

Invasive plant management in forest harvest units – as sources that travel to rivers



Gravel mines



Roadsides



**Forests and
Rivers**

Coastal Conservation Corps

Invasive plant management in river corridors and floodplains to protect salmon and water



Gravel mines



Roadsides



**Forests and
Rivers**



Impacting forest succession

Coastal Conservation Corps

Forestry Support – Our forests need thinning!

Non-merchantable and young stand thinning, and riparian treatments to enhance forest growth, improve habitat for multiple species, increase carbon storage, and make biochar



Coastal Conservation Corps

Forest, Riparian, and Stream Channel Restoration

De-Incision – Deploy the CCC workforce and thinned non-merchantable biomass to rehabilitate incised streams, reconnecting floodplains to store groundwater, reducing downstream flooding, and increasing humidity to reduce wildfire risk



Coastal Conservation Corps

Forest, Riparian, and Stream Channel Restoration

Recover the diversity, the age classes, and the homes and food for forest species with thinning and biochar, and store tons of carbon in soil, live and dead biomass to protect our coastal ecosystems – and produce trees and materials for mills and homes!

Carbon Conservation Corps

For mobile biochar production



We already employ large hand crews in the dangerous work of fire fighting. We could use this labor to reduce fire danger by thinning overcrowded plantations, and improve forest soils by adding biochar, while sequestering carbon from the atmosphere.



Kelpie Wilson
Wilson Biochar Associates



www.slideshare.net/kelpiew/a-carbon-conservation-corps-for-mobile-biochar-production

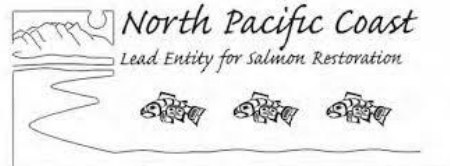
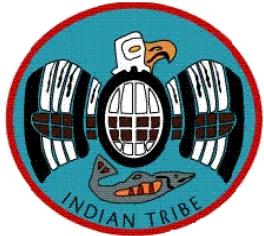
Let's Build a Coastal Conservation Corps!


- Budget: \$20-30 million per biennium
- 130 fulltime, year 'round satisfying jobs
- Partnerships with federal, state, local, tribal, private and non-profits
- Save \$30 billion in impacts and provide community stability

jsilver@10000yearsinstitute.org ✉

www.10000yearsinstitute.org 🌐


Partners, Collaborators, and Funders






Team up? Thank YOU!

Jill Silver 

(360) 301-4306 

jsilver@10000yearsinstitute.org 

www.10000yearsinstitute.org 