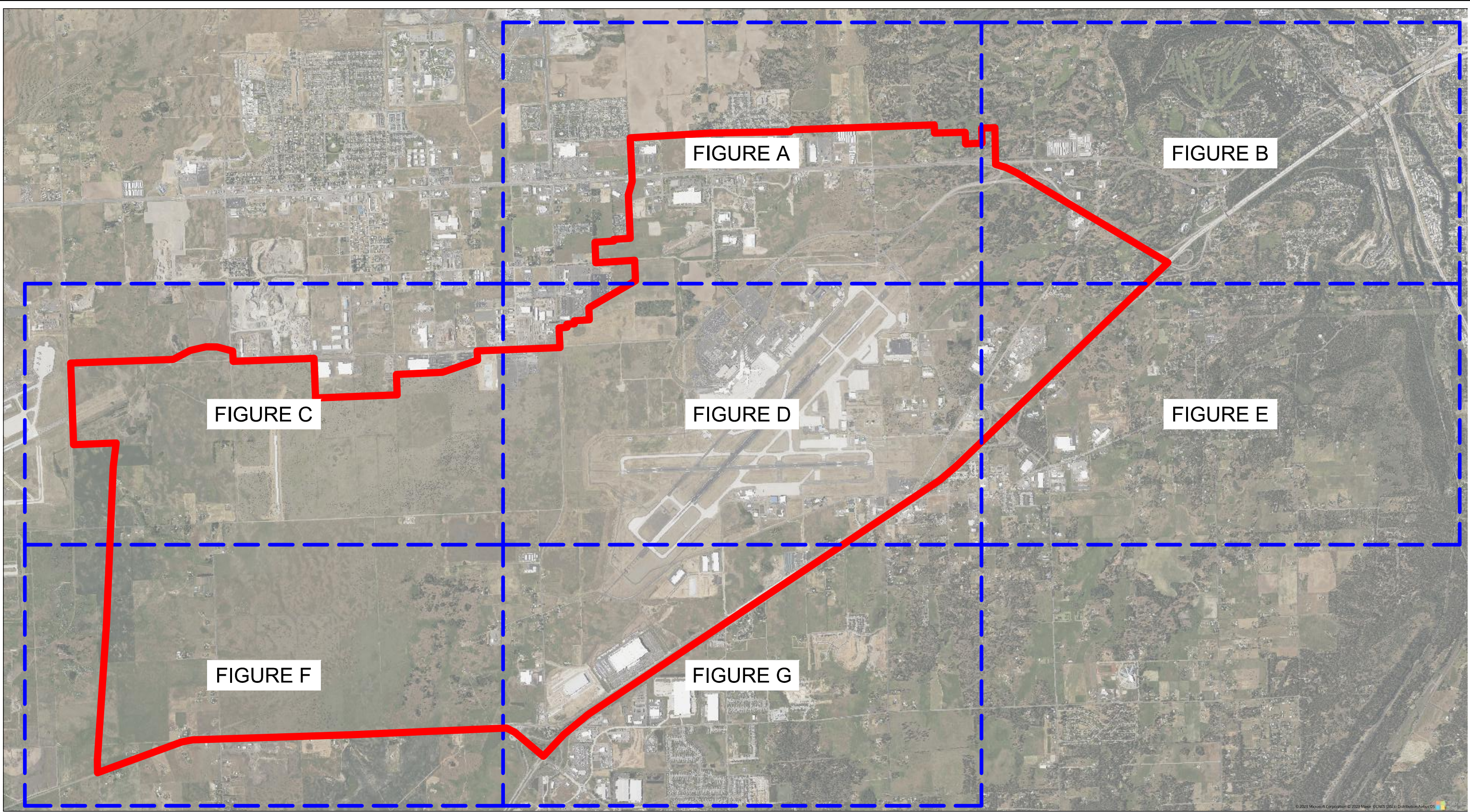



N:\190509\3_Acad\dwg\Sheets\PDA Wetland Inventory.dwg, 10/16/2023 4:35:08 PM, Conner Hansen, DWG To PDF.pc3
© 2019 T-O ENGINEERS. THIS INSTRUMENT IS THE PROPERTY OF T-O ENGINEERS. ANY REPRODUCTION, REUSE OR MODIFICATION OF THIS INSTRUMENT OR ITS CONTENTS WITHOUT SPECIFIC WRITTEN PERMISSION OF T-O ENGINEERS IS STRICTLY PROHIBITED.

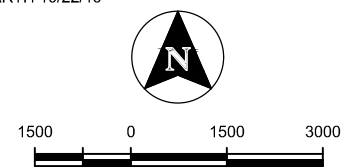


LEGEND

-  APPROXIMATE WEST PLAINS PDA BOUNDARY (9,200 ACRES)
-  INDEX VIEW FRAME

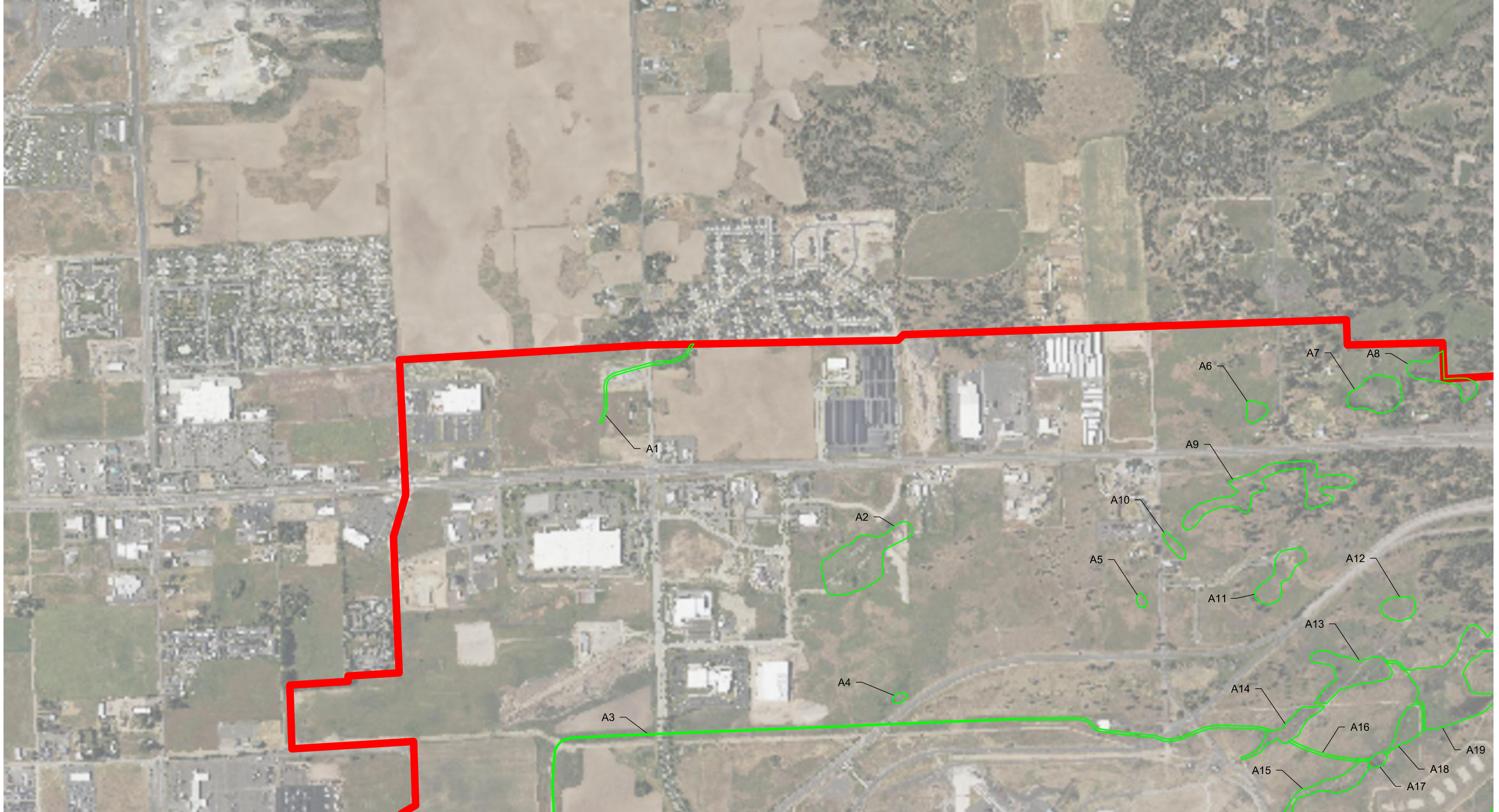
WEST PLAINS PDA
WETLAND INVENTORY EXHIBIT
SHEET INDEX

NOTE: AERIAL IMAGE OBTAINED FROM GOOGLE EARTH 10/22/19





TO T-O ENGINEERS
121 W. PACIFIC AVENUE SUITE 200
SPOKANE, WA 99201
PHONE: (509) 319-2580 WWW.TO-ENGINEERS.COM
E-FILE: PDA Wetland Inventory.dwg DATE: 10/16/23 JOB: 190509

N:\190509\3_Acadwg\Sheets\PDA Wetland Inventory.dwg, 10/16/2023 4:35:15 PM, Conner Hansen, DWG To PDF.pc3
© 2019 T-O ENGINEERS. THIS INSTRUMENT IS THE PROPERTY OF T-O ENGINEERS. ANY REPRODUCTION, REUSE OR MODIFICATION OF THIS INSTRUMENT OR ITS CONTENTS WITHOUT SPECIFIC WRITTEN PERMISSION OF T-O ENGINEERS IS STRICTLY PROHIBITED.

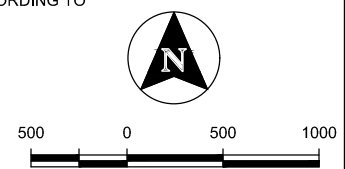


LEGEND

-  APPROXIMATE WEST PLAINS PDA BOUNDARY
-  APPROXIMATE WETLAND BOUNDARY

**WEST PLAINS PDA
WETLAND INVENTORY EXHIBIT
FIGURE A**

NOTE: ONLY WETLANDS WITHIN WEST PLAINS PDA ARE SHOWN.
WETLAND AREAS ARE DERIVED FROM THE NATIONAL WETLAND
INVENTORY (NWI) REFERENCE MAPS AND ADJUSTED ACCORDING TO
VISUAL AND/OR SITE OBSERVATIONS.





T-O ENGINEERS
121 W. PACIFIC AVENUE SUITE 200
SPOKANE, WA 99201
PHONE: (509) 319-2580 WWW.TO-ENGINEERS.COM
E-FILE: PDA Wetland Inventory.dwg DATE: 10/16/23 JOB: 190509

N:\190509\3_Acad\dwg\Sheets\PDA Wetland Inventory.dwg, 10/16/2023 4:35:25 PM, Conner Hansen, DWG To PDF.pc3
© 2019 T-O ENGINEERS. THIS INSTRUMENT IS THE PROPERTY OF T-O ENGINEERS. ANY REPRODUCTION, REUSE OR MODIFICATION OF THIS INSTRUMENT OR ITS CONTENTS WITHOUT SPECIFIC WRITTEN PERMISSION OF T-O ENGINEERS IS STRICTLY PROHIBITED.

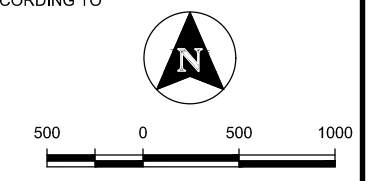


LEGEND

-  APPROXIMATE WEST PLAINS PDA BOUNDARY
-  APPROXIMATE WETLAND BOUNDARY

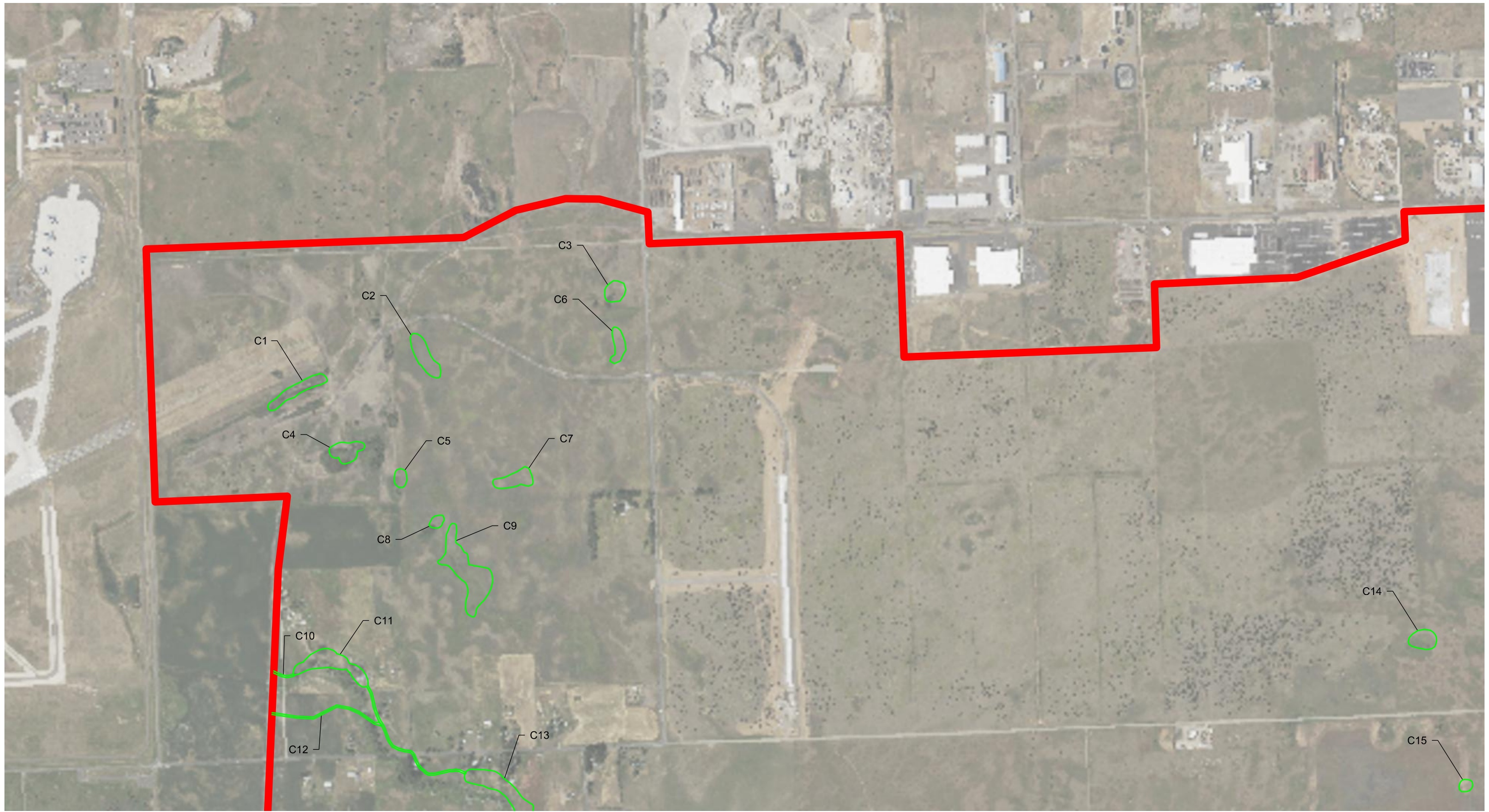
**WEST PLAINS PDA
WETLAND INVENTORY EXHIBIT
FIGURE B**

NOTE: ONLY WETLANDS WITHIN WEST PLAINS PDA ARE SHOWN.
WETLAND AREAS ARE DERIVED FROM THE NATIONAL WETLAND
INVENTORY (NWI) REFERENCE MAPS AND ADJUSTED ACCORDING TO
VISUAL AND/OR SITE OBSERVATIONS.





T-O ENGINEERS
121 W. PACIFIC AVENUE SUITE 200
SPOKANE, WA 99201
PHONE: (509) 319-2580 WWW.TO-ENGINEERS.COM
E-FILE: PDA Wetland Inventory.dwg DATE: 10/16/23 JOB: 190509

N:\190509\3_Acadwg\Sheets\PDA Wetland Inventory.dwg, 10/16/2023 4:35:35 PM, Conner Hansen, DWG To PDF.pc3
© 2019 T-O ENGINEERS. THIS INSTRUMENT IS THE PROPERTY OF T-O ENGINEERS. ANY REPRODUCTION, REUSE OR MODIFICATION OF THIS INSTRUMENT OR ITS CONTENTS WITHOUT SPECIFIC WRITTEN PERMISSION OF T-O ENGINEERS IS STRICTLY PROHIBITED.

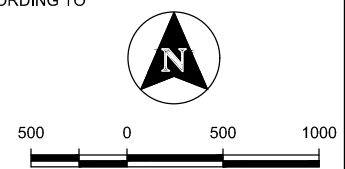


LEGEND

-  APPROXIMATE WEST PLAINS PDA BOUNDARY
-  APPROXIMATE WETLAND BOUNDARY

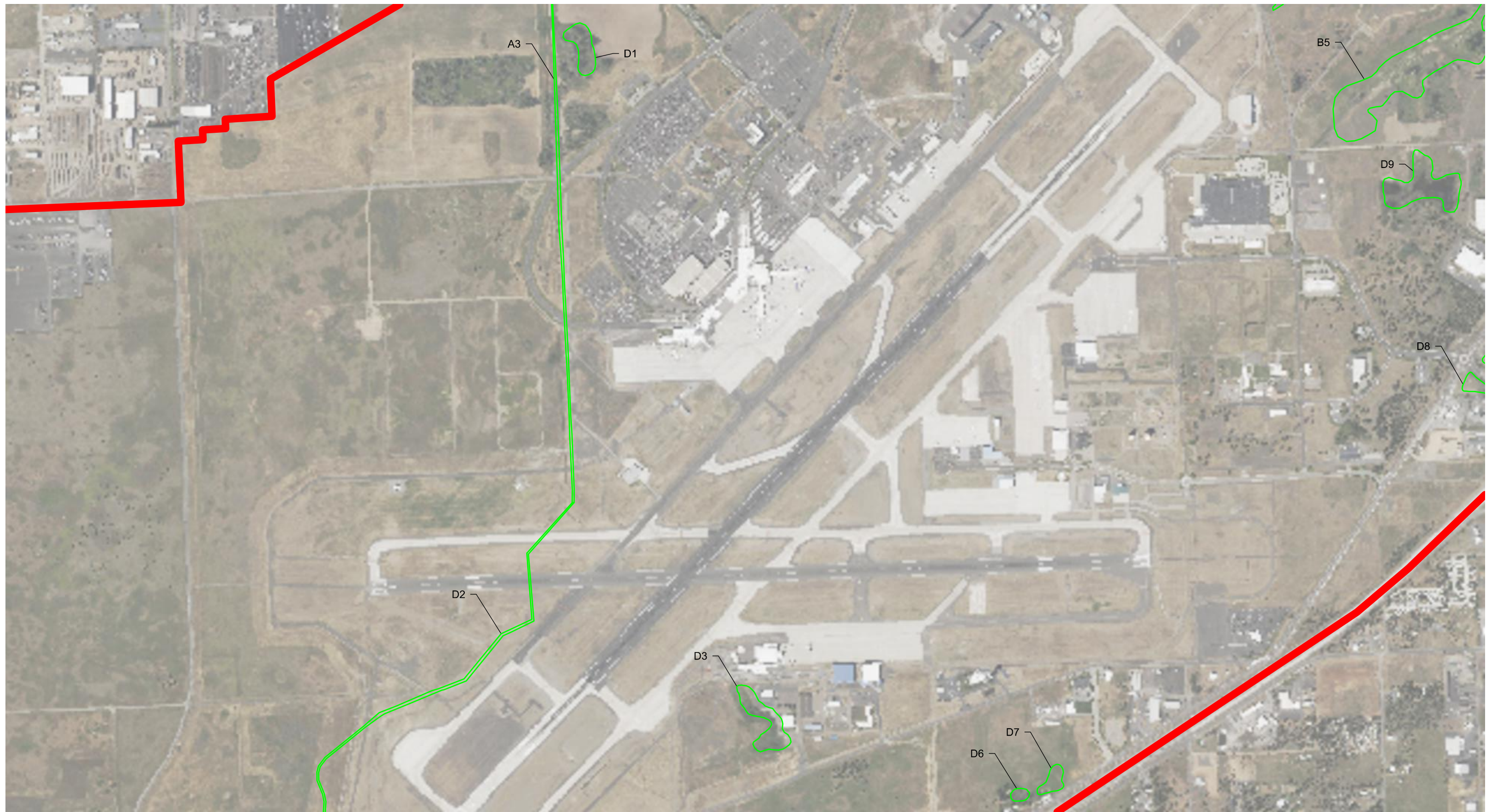
**WEST PLAINS PDA
WETLAND INVENTORY EXHIBIT
FIGURE C**

NOTE: ONLY WETLANDS WITHIN WEST PLAINS PDA ARE SHOWN.
WETLAND AREAS ARE DERIVED FROM THE NATIONAL WETLAND
INVENTORY (NWI) REFERENCE MAPS AND ADJUSTED ACCORDING TO
VISUAL AND/OR SITE OBSERVATIONS.





TO T-O ENGINEERS
121 W. PACIFIC AVENUE SUITE 200
SPOKANE, WA 99201
PHONE: (509) 319-2580 WWW.TO-ENGINEERS.COM
E-FILE: PDA Wetland Inventory.dwg DATE: 10/16/23 JOB: 190509

N:\190509\3_Acad\dwg\Sheets\PDA Wetland Inventory.dwg, 10/16/2023 4:35:45 PM, Conner Hansen, DWG To PDF.pc3
© 2019 T-O ENGINEERS. THIS INSTRUMENT IS THE PROPERTY OF T-O ENGINEERS. ANY REPRODUCTION, REUSE OR MODIFICATION OF THIS INSTRUMENT OR ITS CONTENTS WITHOUT SPECIFIC WRITTEN PERMISSION OF T-O ENGINEERS IS STRICTLY PROHIBITED.

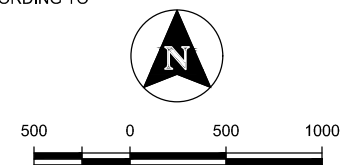


LEGEND

-  APPROXIMATE WEST PLAINS PDA BOUNDARY
-  APPROXIMATE WETLAND BOUNDARY

**WEST PLAINS PDA
WETLAND INVENTORY EXHIBIT
FIGURE D**

NOTE: ONLY WETLANDS WITHIN WEST PLAINS PDA ARE SHOWN.
WETLAND AREAS ARE DERIVED FROM THE NATIONAL WETLAND
INVENTORY (NWI) REFERENCE MAPS AND ADJUSTED ACCORDING TO
VISUAL AND/OR SITE OBSERVATIONS.





T-O ENGINEERS
121 W. PACIFIC AVENUE SUITE 200
SPOKANE, WA 99201
PHONE: (509) 319-2580 WWW.TO-ENGINEERS.COM
E-FILE: PDA Wetland Inventory.dwg DATE: 10/16/23 JOB: 190509

N:\190509\3_Acad\dwg\Sheets\PDA Wetland Inventory.dwg, 10/16/2023 4:35:55 PM, Conner Hansen, DWG To PDF.pc3
© 2019 T-O ENGINEERS. THIS INSTRUMENT IS THE PROPERTY OF T-O ENGINEERS. ANY REPRODUCTION, REUSE OR MODIFICATION OF THIS INSTRUMENT OR ITS CONTENTS WITHOUT SPECIFIC WRITTEN PERMISSION OF T-O ENGINEERS IS STRICTLY PROHIBITED.

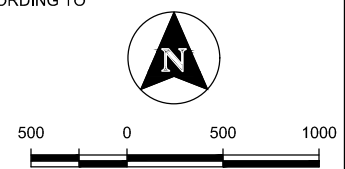


LEGEND

-  APPROXIMATE WEST PLAINS PDA BOUNDARY
-  APPROXIMATE WETLAND BOUNDARY

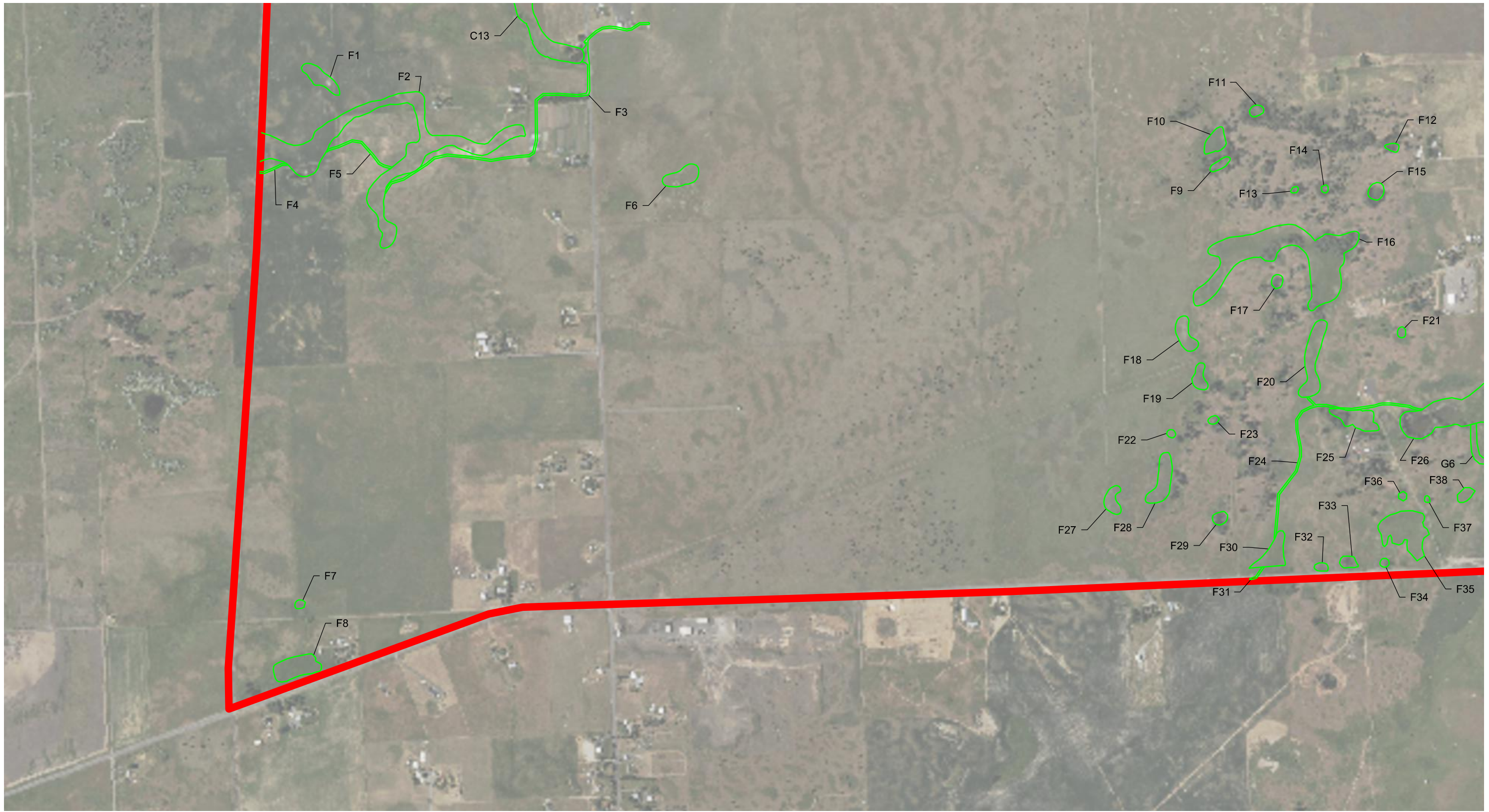
**WEST PLAINS PDA
WETLAND INVENTORY EXHIBIT
FIGURE E**

NOTE: ONLY WETLANDS WITHIN WEST PLAINS PDA ARE SHOWN.
WETLAND AREAS ARE DERIVED FROM THE NATIONAL WETLAND
INVENTORY (NWI) REFERENCE MAPS AND ADJUSTED ACCORDING TO
VISUAL AND/OR SITE OBSERVATIONS.





TO T-O ENGINEERS
121 W. PACIFIC AVENUE SUITE 200
SPOKANE, WA 99201
PHONE: (509) 319-2580 WWW.TO-ENGINEERS.COM
E-FILE: PDA Wetland Inventory.dwg DATE: 10/16/23 JOB: 190509

N:\190509\3_Acad\dwg\Sheets\PDAs\Wetland Inventory.dwg, 10/16/2023 4:36:05 PM, Conner Hansen, DWG To PDF.pc3
© 2019 T-O ENGINEERS. THIS INSTRUMENT IS THE PROPERTY OF T-O ENGINEERS. ANY REPRODUCTION, REUSE OR MODIFICATION OF THIS INSTRUMENT OR ITS CONTENTS WITHOUT SPECIFIC WRITTEN PERMISSION OF T-O ENGINEERS IS STRICTLY PROHIBITED.

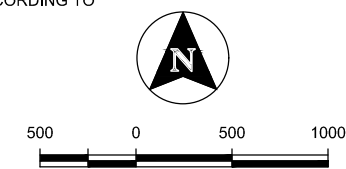


LEGEND

-  APPROXIMATE WEST PLAINS PDA BOUNDARY
-  APPROXIMATE WETLAND BOUNDARY

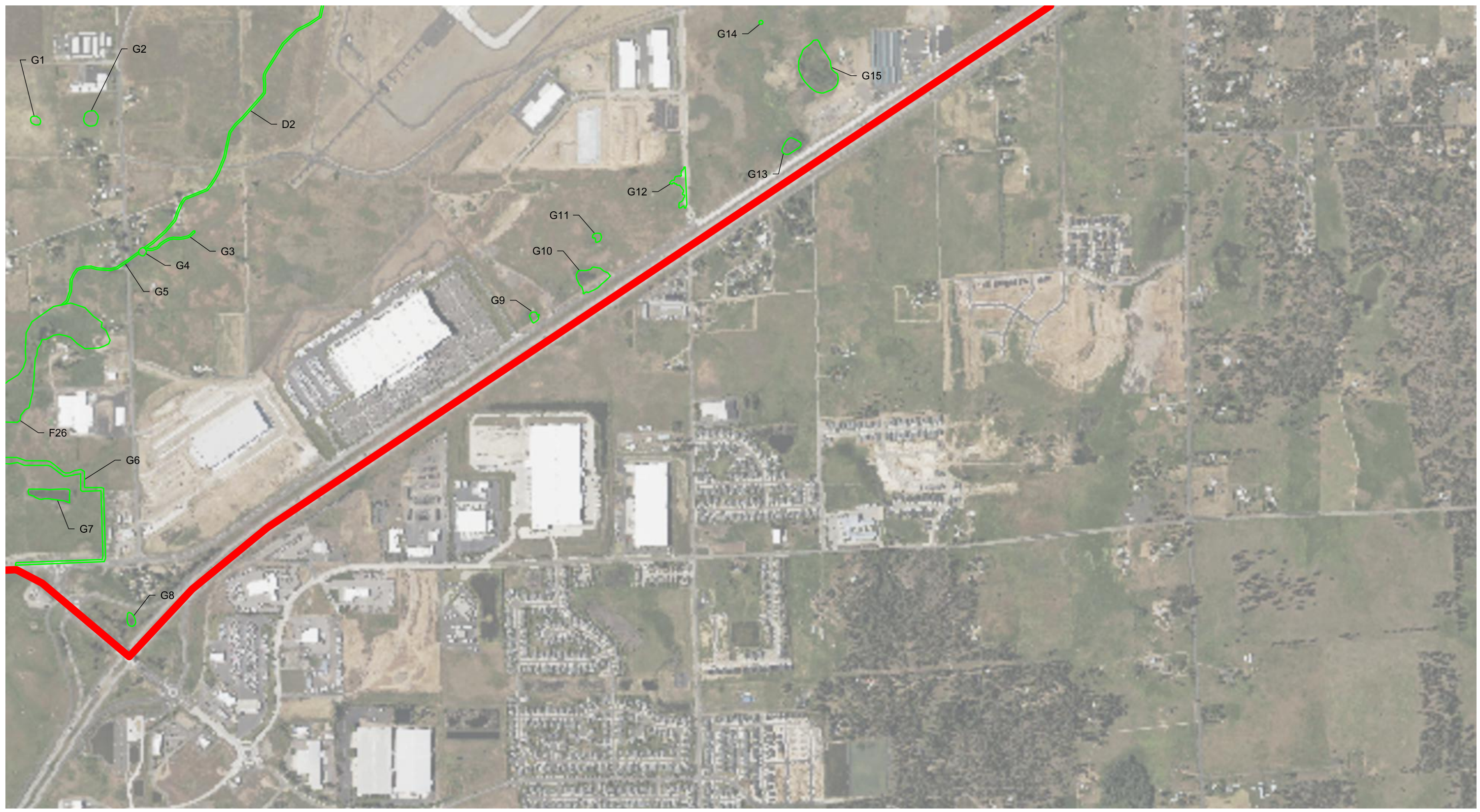
**WEST PLAINS PDA
WETLAND INVENTORY EXHIBIT
FIGURE F**

NOTE: ONLY WETLANDS WITHIN WEST PLAINS PDA ARE SHOWN.
WETLAND AREAS ARE DERIVED FROM THE NATIONAL WETLAND
INVENTORY (NWI) REFERENCE MAPS AND ADJUSTED ACCORDING TO
VISUAL AND/OR SITE OBSERVATIONS.





T-O ENGINEERS
121 W. PACIFIC AVENUE SUITE 200
SPOKANE, WA 99201
PHONE: (509) 319-2580 WWW.TO-ENGINEERS.COM
E-FILE: PDA Wetland Inventory.dwg DATE: 10/16/23 JOB: 190509

N:\190509\3_Acad\dwg\Sheets\PDA Wetland Inventory.dwg, 10/16/2023 4:36:16 PM, Conner Hansen, DWG To PDF.pc3
© 2019 T-O ENGINEERS. THIS INSTRUMENT IS THE PROPERTY OF T-O ENGINEERS. ANY REPRODUCTION, REUSE OR MODIFICATION OF THIS INSTRUMENT OR ITS CONTENTS WITHOUT SPECIFIC WRITTEN PERMISSION OF T-O ENGINEERS IS STRICTLY PROHIBITED.

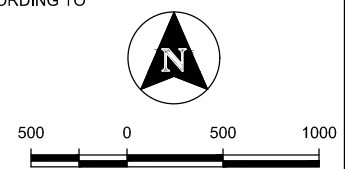


LEGEND

-  APPROXIMATE WEST PLAINS PDA BOUNDARY
-  APPROXIMATE WETLAND BOUNDARY

**WEST PLAINS PDA
WETLAND INVENTORY EXHIBIT
FIGURE G**

NOTE: ONLY WETLANDS WITHIN WEST PLAINS PDA ARE SHOWN.
WETLAND AREAS ARE DERIVED FROM THE NATIONAL WETLAND
INVENTORY (NWI) REFERENCE MAPS AND ADJUSTED ACCORDING TO
VISUAL AND/OR SITE OBSERVATIONS.



TO T-O ENGINEERS
121 W. PACIFIC AVENUE SUITE 200
SPOKANE, WA 99201
PHONE: (509) 319-2580 WWW.TO-ENGINEERS.COM
E-FILE: PDA Wetland Inventory.dwg DATE: 10/16/23 JOB: 190509

N:\190509_3_Acadwg\Sheets\PD\Wetland Inventory.dwg, 10/17/2023 8:11:27 AM, Conner Hansen, DWG To PDF.pc3
 © 2019 T-O ENGINEERS. THIS INSTRUMENT IS THE PROPERTY OF T-O ENGINEERS. ANY REPRODUCTION, REUSE OR MODIFICATION OF THIS INSTRUMENT OR ITS CONTENTS WITHOUT SPECIFIC WRITTEN PERMISSION OF T-O ENGINEERS IS STRICTLY PROHIBITED.

WETLAND SUMMARY TABLE				
WETLAND	CLASS	CLASSIFICATION	ESTIMATED ACREAGE	SUSPECTED CATEGORY
A1	RIVERINE	R5UBH	1.14	3
A2	FW EMERGENT WETLAND + POND	PUBHx, PAB4Hx, PEM1C	10.32	3
A3	RIVERINE	R5UBHx	7.63	3
A4	FW POND	PAB4Hx	0.35	3
A5	FW EMERGENT WETLAND	PEM1A	0.34	3
A6	FW EMERGENT WETLAND	PEM1F	1.13	3
A7	FW EMERGENT WETLAND	PEM1C	4.88	3
A8	FW EMERGENT WETLAND	PEM1A	3.55	3
A9	FW EMERGENT + FORESTED/SHRUB WETLAND	PEM1A, PSS1C	9.67	3
A10	FW EMERGENT WETLAND	PEM1A	0.82	3
A11	FW EMERGENT WETLAND	PEM1A	4.00	3
A12	FW EMERGENT WETLAND	PEM1A	2.14	3
A13	FW EMERGENT WETLAND	PEM1A	6.32	3
A14	FW EMERGENT + FORESTED/SHRUB WETLAND	PFO1A, PEM1A	3.03	3
A15	FW EMERGENT WETLAND	PEM1A	3.37	3
A16	RIVERINE	R5UBH	0.67	3
A17	FW FOREST/SHRUB WETLAND	PSS1C	0.68	3
A18	FW EMERGENT WETLAND	PEM1A	2.67	3
A19	FW EMERGENT WETLAND + RIVERINE	PEM1A, R5UBH	17.23	3
B1	FW EMERGENNT WETLAND	PEM1A	0.18	3
B2	FW FOREST/SHRUB WETLAND	PSS1C	1.63	3
B3	FW EMERGENNT WETLAND	PEM1C	7.54	3
B4	FW EMERGENNT WETLAND	PEM1C	2.37	3
B5	FW EMERGENNT WETLAND	PEM1A, PSS1A	31.75	3
B6	FW EMERGENNT WETLAND	PEM1C	1.96	3
B7	FW FOREST/SHRUB WETLAND	PSS1C	1.56	3
B8	FW EMERGENT WETLAND + RIVERINE	PEM1C, R4SBC	1.69	3
B9	FW EMERGENT WETLAND	PEM1C	11.47	3
B10	FW FOREST/SHRUB WETLAND	PSS1C	0.78	3
C1	FW POND	PUBHx	2.04	3
C2	FW EMERGENT WETLAND	PEM1A	2.12	3
C3	FW POND	PUBHx	1.14	3
C4	FW POND + FOREST/SHRUB WETLAND	PSS1C, PAB3H	1.71	3
C5	FW FOREST/SHRUB WETLAND	PSS1C	0.63	3
C6	FW EMERGENT WETLAND	PEM1A	1.14	3
C7	FW EMERGENT WETLAND	PEM1A	1.67	3
C8	FW FOREST/SHRUB WETLAND	PSS1C	0.47	3
C9	FW EMERGENT WETLAND	PEM1A, PEM1F	5.91	3

C10	FW EMERGENT WETLAND	PEM1Cx	0.13	3
C11	FW EMERGENT + FORESTED/SHRUB WETLAND + RIVERINE	PEM1A, PFO1A, R4SBC	4.44	3
C12	RIVERINE	R4SBC	0.72	3
C13	FW EMERGENT WETLAND + RIVERINE	PEM1Ad, R4SBC	7.90	3
C14	FW EMERGENT WETLAND	PEM1A	1.44	3
C15	FW EMERGENT WETLAND	PEM1A	0.44	3
D1	FW EMERGENT WETLAND	PEM1A	3.04	3
D2	RIVERINE	R5UBFx, R4SBC, R5UBH	5.24	3
D3	FW FOREST/SHRUB WETLAND	PSS1A	4.60	3
D4				
D5				
D6	FW EMERGENT WETLAND	PEM1C	0.63	3
D7	FW EMERGENT WETLAND	PEM1A	1.48	3
D8	FW EMERGENT + FOREST/SHRUB WETLAND	PEM1F, PSS1C	1.19	3
D9	FW POND	PUBHx	7.91	3
E1	FW EMERGENT WETLAND	PEM1A	1.42	3
E2	FW POND	PAB4H	0.69	3
E3	FW POND	PUBHx	0.63	3
E4	FW EMERGENT + FOREST/SHRUB WETLAND	PEM1F, PSS1C	0.52	3
F1	FW EMERGENT WETLAND	PEM1C	1.70	3
F2	FW EMERGENT WETLAND	PEM1C, PEM1A	20.71	3
F3	RIVERINE	R4SBC	2.58	3
F4	RIVERINE	R4SBC	0.18	3
F5	RIVERINE	R4SBC	0.47	3
F6	FW EMERGENT WETLAND	PEM1A	1.73	3
F7	FW EMERGENT WETLAND	PEM1C	0.24	3
F8	FW EMERGENT WETLAND	PEM1C	2.83	3
F9	FW EMERGENT WETLAND	PEM1C	0.52	3
F10	FW EMERGENT WETLAND	PEM1C	1.27	3
F11	FW EMERGENT WETLAND	PEM1C	0.41	3
F12	FW FOREST/SHRUB WETLAND	PSS1C	0.29	3
F13	FW EMERGENT WETLAND	PEM1C	0.12	3
F14	FW EMERGENT WETLAND	PEM1C	0.14	3
F15	FW EMERGENT WETLAND	PEM1C	0.70	3
F16	FW EMERGENT + FOREST/SHRUB WETLAND	PEM1A, PSS1A	17.85	3
F17	FW EMERGENT WETLAND	PEM1C	0.41	3
F18	FW EMERGENT WETLAND	PEM1A	1.49	3
F19	FW EMERGENT WETLAND	PEM1A	0.90	3
F20	FW EMERGENT WETLAND	PEM1C	3.36	3
F21	FW EMERGENT WETLAND	PEM1C	0.23	3

F22	FW EMERGENT WETLAND	PEM1A	0.18	3
F23	FW FOREST/SHRUB WETLAND	PSS1A	0.22	3
F24	RIVERINE	R4SBC	1.61	3
F25	FW EMERGENT WETLAND + POND	PEM1C, PEM1Fx, PUBHx	2.27	3
F26	FW EMERGENT WETLAND + POND	PEM1C, PEM1Fx, PUBHx	20.29	3
F27	FW EMERGENT WETLAND	PEM1A	1.08	3
F28	FW EMERGENT WETLAND	PEM1A	2.33	3
F29	FW EMERGENT WETLAND	PEM1C	0.51	3
F30	FW EMERGENT WETLAND	PEM1C	1.99	3
F31	RIVERINE	R4SBC	0.11	3
F32	FW EMERGENT WETLAND	PEM1C	0.31	3
F33	FW EMERGENT WETLAND	PEM1C	0.56	3
F34	FW EMERGENT WETLAND	PEM1C	0.21	3
F35	FW EMERGENT WETLAND	PEM1C	4.95	3
F36	FW EMERGENT WETLAND	PEM1C	0.19	3
F37	FW EMERGENT WETLAND	PEM1C	0.10	3
F38	FW EMERGENT WETLAND	PEM1C	0.57	3
G1	FW EMERGENT WETLAND	PEM1A	0.23	3
G2	FW EMERGENT WETLAND	PEM1A	0.59	3
G3	FW EMERGENT WETLAND	PEM1F	0.34	3
G4	FW POND	PUBHx	0.16	3
G5	RIVERINE	R4SBC	0.65	3
G6	RIVERINE	R5UBHx	3.79	3
G7	FW POND	PUBHx	1.34	3
G8	FW EMERGENT WETLAND	PEM1C	0.29	3
G9	FW POND	PUBHx	0.18	3
G10	FW POND	PUBHx	1.42	3
G11	FW EMERGENT WETLAND	PEM1C	0.14	3
G12	FW EMERGENT WETLAND	PEM1C	0.57	3
G13	DEPRESSIONAL WETLAND	PFO1A	0.50	2
G14	DEPRESSIONAL WETLAND	PEM1C	0.01	2
G15	DEPRESSIONAL WETLAND	PFO1A	3.50	2
TOTAL ESTIMATED WETLAND AREA (ACRES)			309.44	



T-O ENGINEERS

121 W. PACIFIC AVENUE SUITE 200
SPOKANE, WA 99201

PHONE: (509) 319-2580 WWW.TO-ENGINEERS.COM

E-FILE: PDA Wetland Inventory.dwg DATE: 10/16/23 JOB: 190509