

## JE McHugh

Thank you Ecology and Spokane's Toxic Cleanup Team!

1) No more extensions for SIA - impacted residents are done waiting - it's been 9 years since SIA first discovered PFAS in their monitoring wells.

2) Is there an intention to incorporate Dr. C Pritchard/EWU's Fate & Transport study results for cross verification? 2-pg results attached as .pdf

3) Will SIA's responsibilities also extend to surface water PFAS monitoring and cleanup? Dr. Pritchard's study also included surface water sampling, finding high PFAS levels that eventually reach Latah Creek and the Spokane River. Decades and millions have been spent cleaning up PCBs in the river- are there plans to also protect the river from PFAS contamination?

4)The Pacific NW Technology Park - please revisit City of Spokane B2402251 SEPA review of a proposal to collect, conduct and dispose of stormwater into the Airport Paleochannel. The review is inadequate in addressing known PFAS contamination or the transmissive qualities of the paleochannels, and is proposing to further threaten downgradient domestic wells with stormwater disposal. .pdf attached.

5) Ecology's SIA boundary map does not match that of the S3R3 Solutions (city-county-airport Public Development Authority) area of intent to develop. There must be a requirement to review, for contamination potential, all development applications by businesses to locate on the 9,000 acres (including 300 acres of wetlands) under this PDA control. .pdf of PDA Wetlands Survey attached.

6) For all future West Plains development reliant on sole source wells, a Point-of-Entry Treatment (POET) system must be reserved. Or Ecology should halt issuance of all well permits on the West Plains until/unless PFAS is proven to be controlled/eliminated - might this be an application of the 'Inadvertent Discovery Plan'?

7) As with Fairchild AFB's provision of POET systems to PFAS impacted homes, there is also maintenance and filter replacement in perpetuity. Will this be required of city-county-SIA provided POET systems?

8) At the 2/12/2026 first public meeting hosted by and at Spokane Regional Health, SIA management announced 2025 revenue at \$3 billion. Will a surety bond be required to ensure they meet their obligations? SIA apparently has the funds, but a questionable inclination to make contaminated well owners whole.

Thank you Ecology, state Dept of Health, Environmental Protection Agency Region 10, Emergency Mgmt & Superfund office, and EWU-Dr. Pritchard. All have shouldered an immense task and are collectively finding the way to solutions.

With deep appreciation, JE McHugh

# PFAS in the West Plains

PFAS “forever chemicals” are human-made substances found in many everyday products like some commercial waterproofing and non-stick products, packaging, waxes, paints, and historic industrial firefighting foams. They are very hard to break down, so once they get into soil or water, they stay there for a long time. Over time, PFAS can build up in the environment, in drinking water, and even in living things. High levels of PFAS have been linked to various health problems.

## What You Can Do

**Stay informed:** Visit the WA Department of Health or Department of Ecology websites (lower right).

**Limit exposure:** Avoid known sources of PFAS. Boil with filtered water, boiling can concentrate toxics.

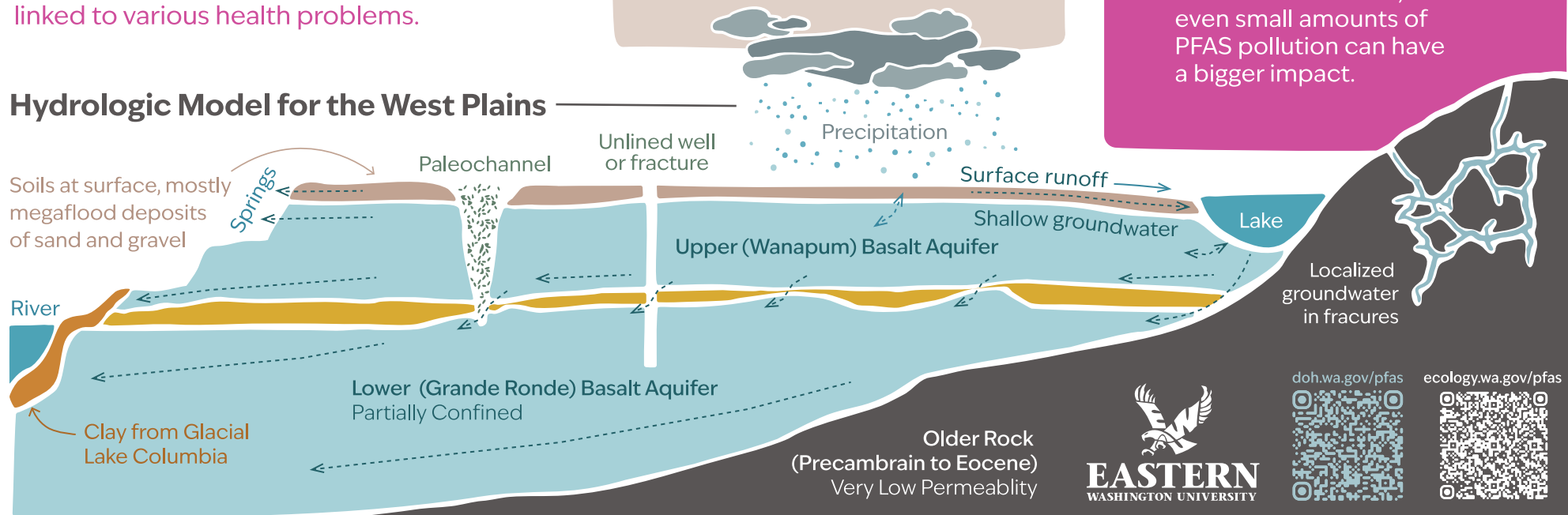
**Speak up:** Advocate for cleanup, testing, & more considerate land development. Work with government or non-profit agencies. Talk with neighbors.

## Why This Matters

### West Plains Aquifers are Declining

- In the West Plains, aquifers are losing water because people are using more than nature can replace.
- The aquifers now depend more on rain and snow to refill, but warm/dry years are making that difficult.
- Development adds roads, parking lots, and buildings, which block rain and snow from soaking into the ground and refilling the aquifer.
- With less water underground, there is less dilution, so even small amounts of PFAS pollution can have a bigger impact.

## Hydrologic Model for the West Plains



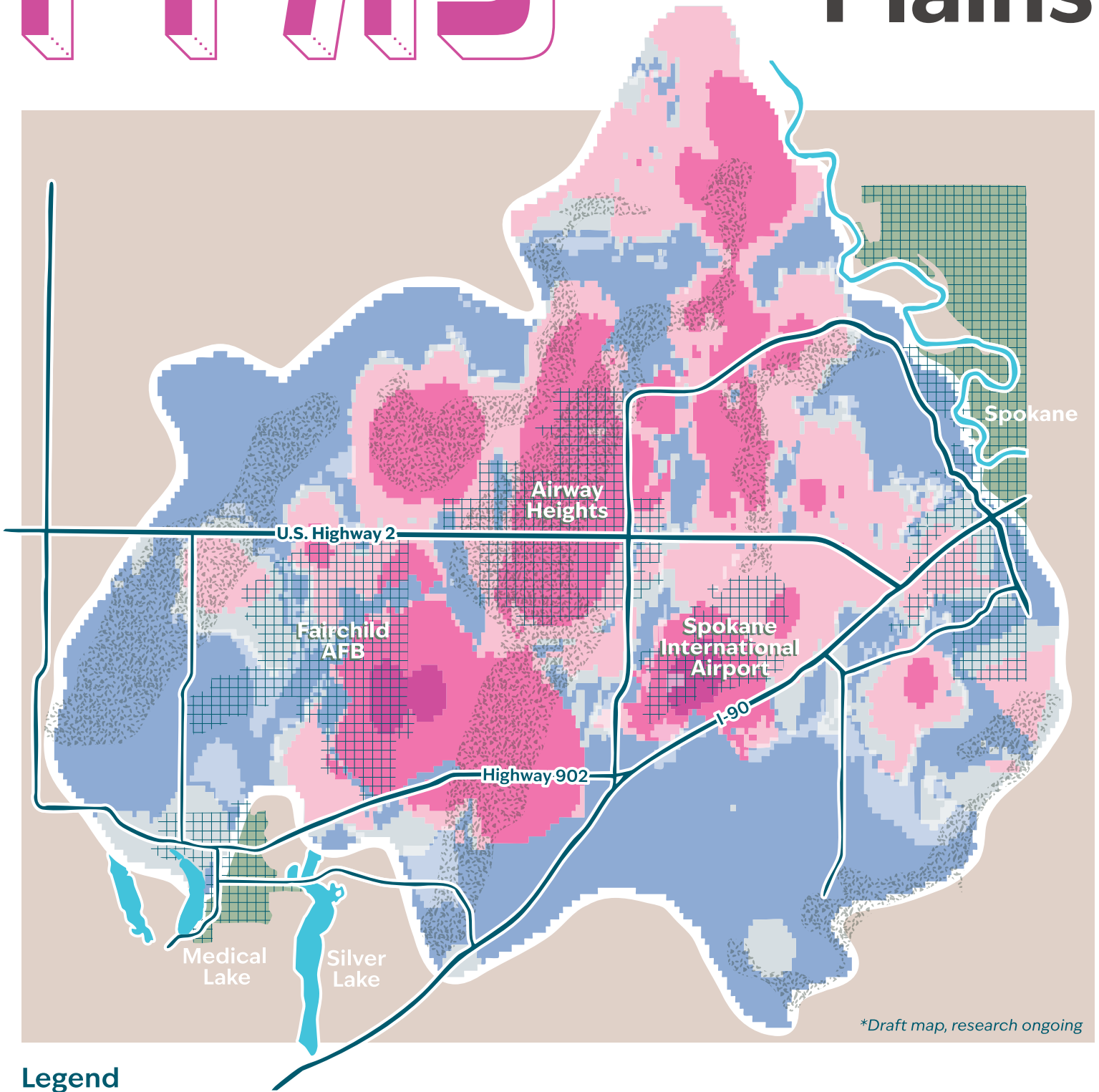
[doh.wa.gov/pfas](https://doh.wa.gov/pfas)

[ecology.wa.gov/pfas](https://ecology.wa.gov/pfas)

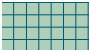





# PFAAS

# in the West Plains



## Legend

-  Municipal Boundaries
-  Bodies of Water
-  Paleochannels
-  Outside Testing Zone

## General PFOS Detected at Regional Scale (parts per trillion)

- |  |   |
|--|---|
|  2,000-20,051 |  4-9.9 |
|  70-1999.9    |  0-3.9 |
|  10-69.9      |   |

