

Jean Mendoza

Comment attached

Hello Ben,

In your email you said you may be available to talk about Chapter 11 of the Voluntary Clean Water Guidance for Agriculture. I would be grateful for the opportunity to learn more about this document. I am available to talk by phone or ZOOM on June 19 in the morning, June 20 until 3 PM, June 21 until 2 PM, June 22 after 11 AM, and June 23 in the morning, or other times the following week.

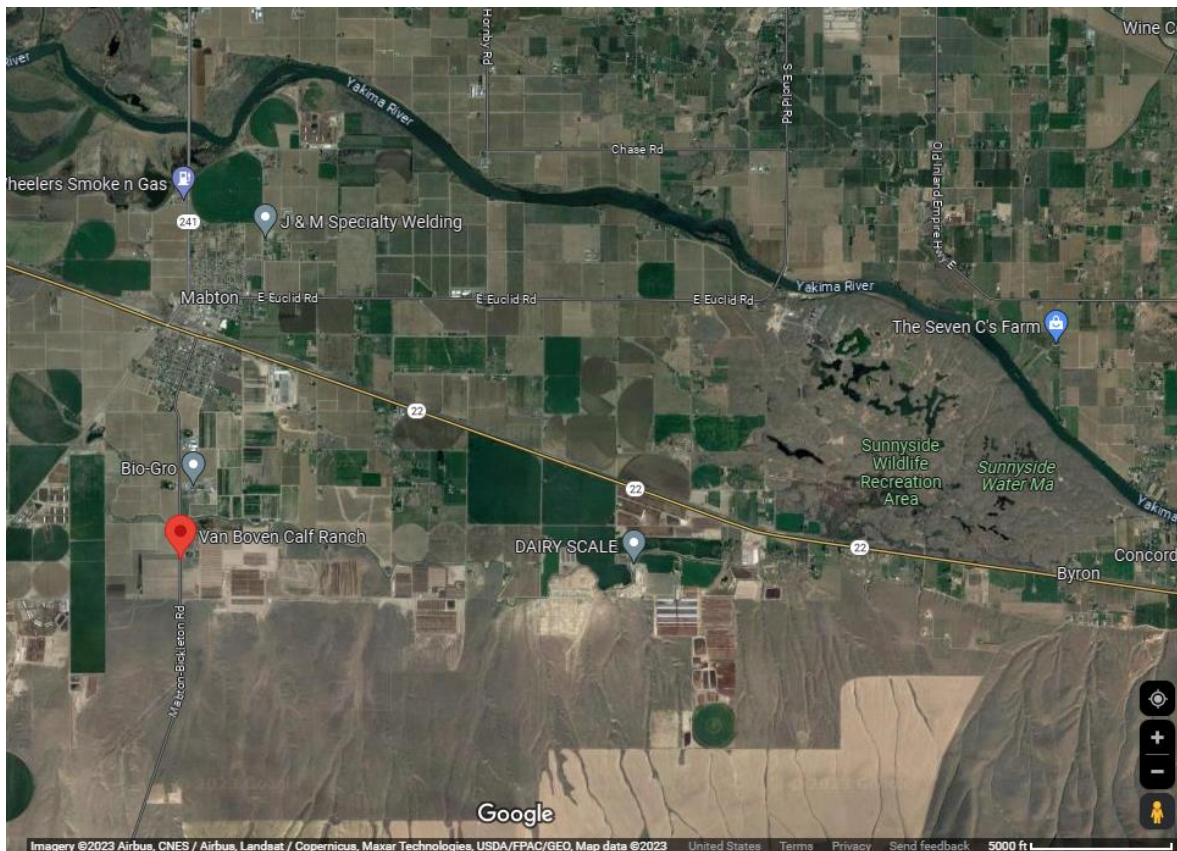
Thanks so much for your help.

Jean Mendoza

Here are questions/issues I would like to explore:

- What are the regulatory backups for these voluntary recommendations? What can Ecology do when producers choose to ignore the recommendations?
- Does Ecology surveille facilities to determine how many follow the voluntary guidance?
- Are there monitoring wells downgradient from these operations to measure leaching to the aquifer?

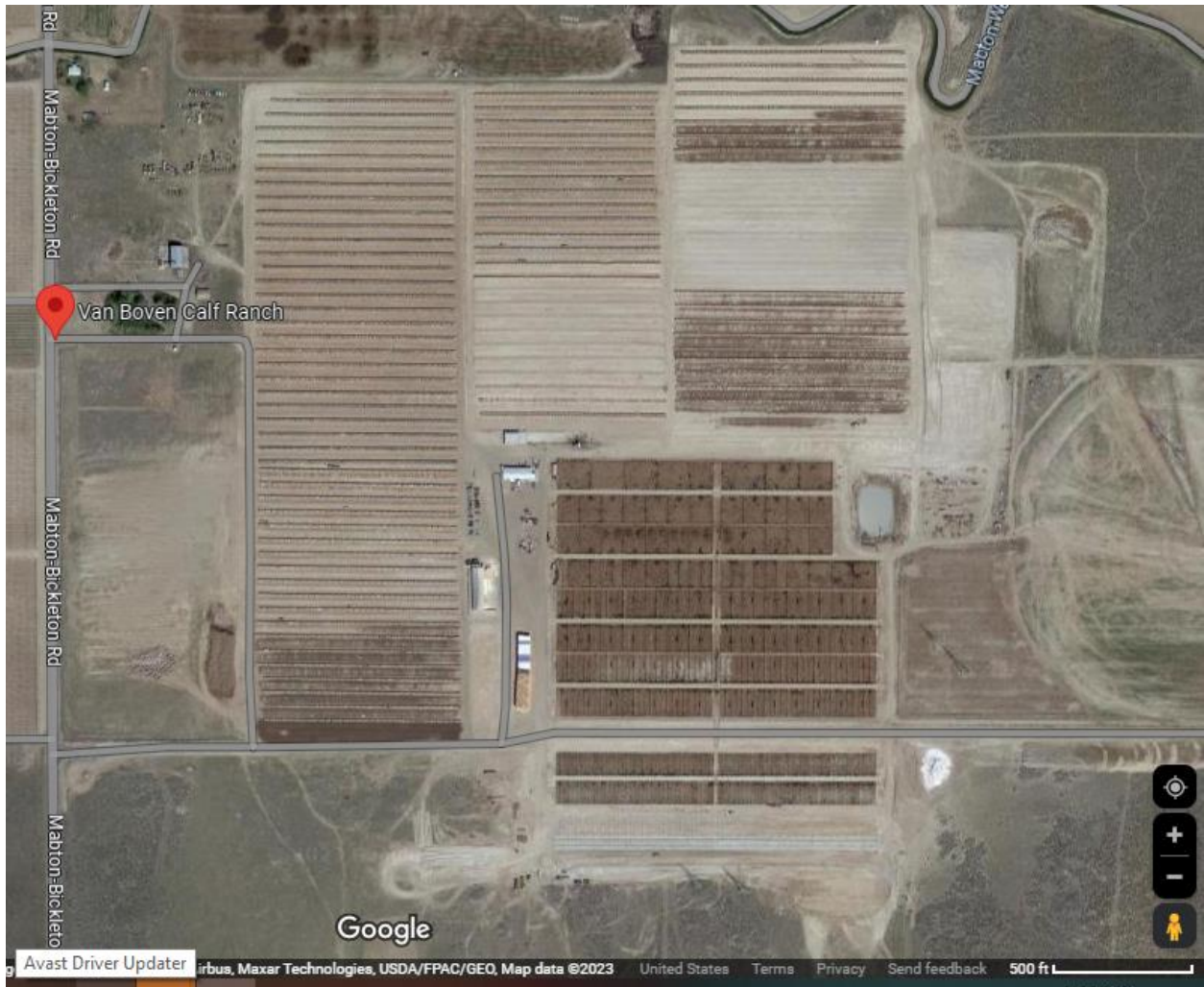
Below are aerial pictures of two calf feeding facilities near Mabton, WA. As nearly as I can tell there are no vegetative strips to absorb runoff from thousands of calf hutches. There is continuous traffic necessary to feed the calves and hopefully remove excrement in a timely manner. This means compacted surfaces with increased risk of runoff.



Van Boven and Veldhuis Calf Feeding Operations



Van Boven Calf Feeding Operation

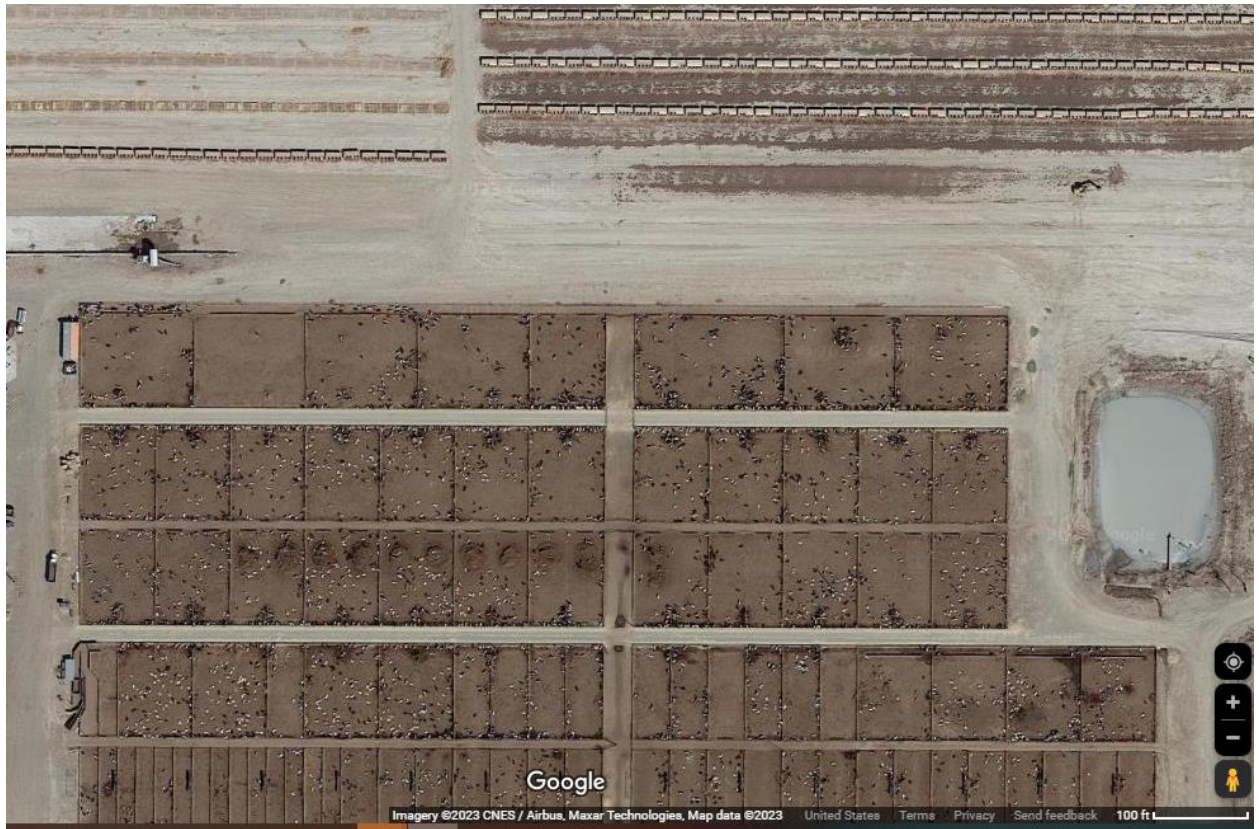




Google



Google



Google

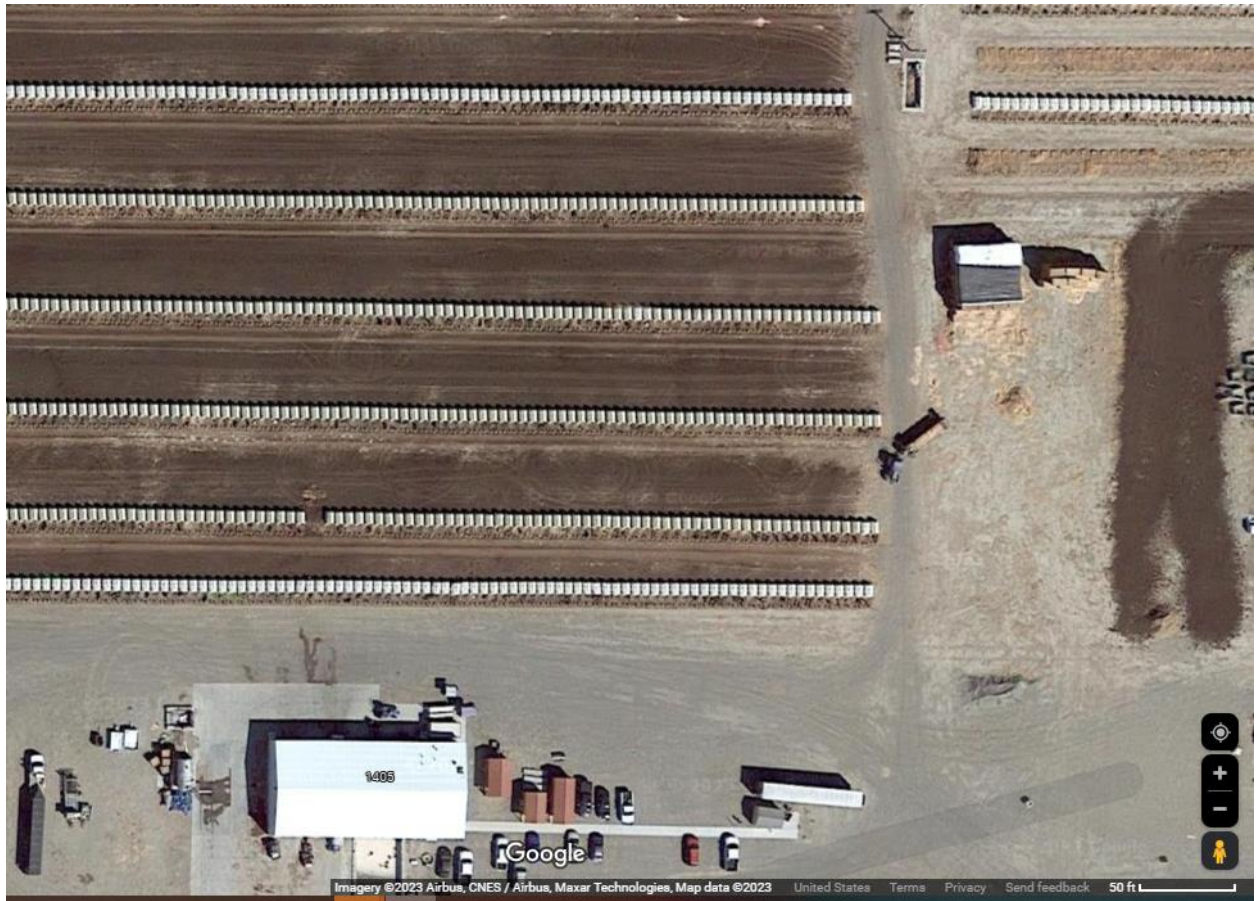
Imagery ©2023 CNES / Airbus, Maxar Technologies, Map data ©2023 United States Terms Privacy Send feedback 100 ft



Veldhuis Calf Feeding Operation









Google

Map data ©2023, Map data ©2023 United States Terms Privacy Send feedback 10 ft

6:00 AM



Google

Imagery ©2023 Airbus, Map data ©2023 United States Terms Privacy Send feedback 20 ft