



Also in this section

Species & Habitats

Species in Washington (/species-habitats/species)

Ecosystems in Washington (/species-habitats/ecosystems)

Living with wildlife (/species-habitats/living)

At-risk species (/species-habitats/at-risk)

Habitat recovery and protection (/species-habitats/habitat-recovery)

Aquatic

Marine toxic contaminants

The Washington Department of Fish and

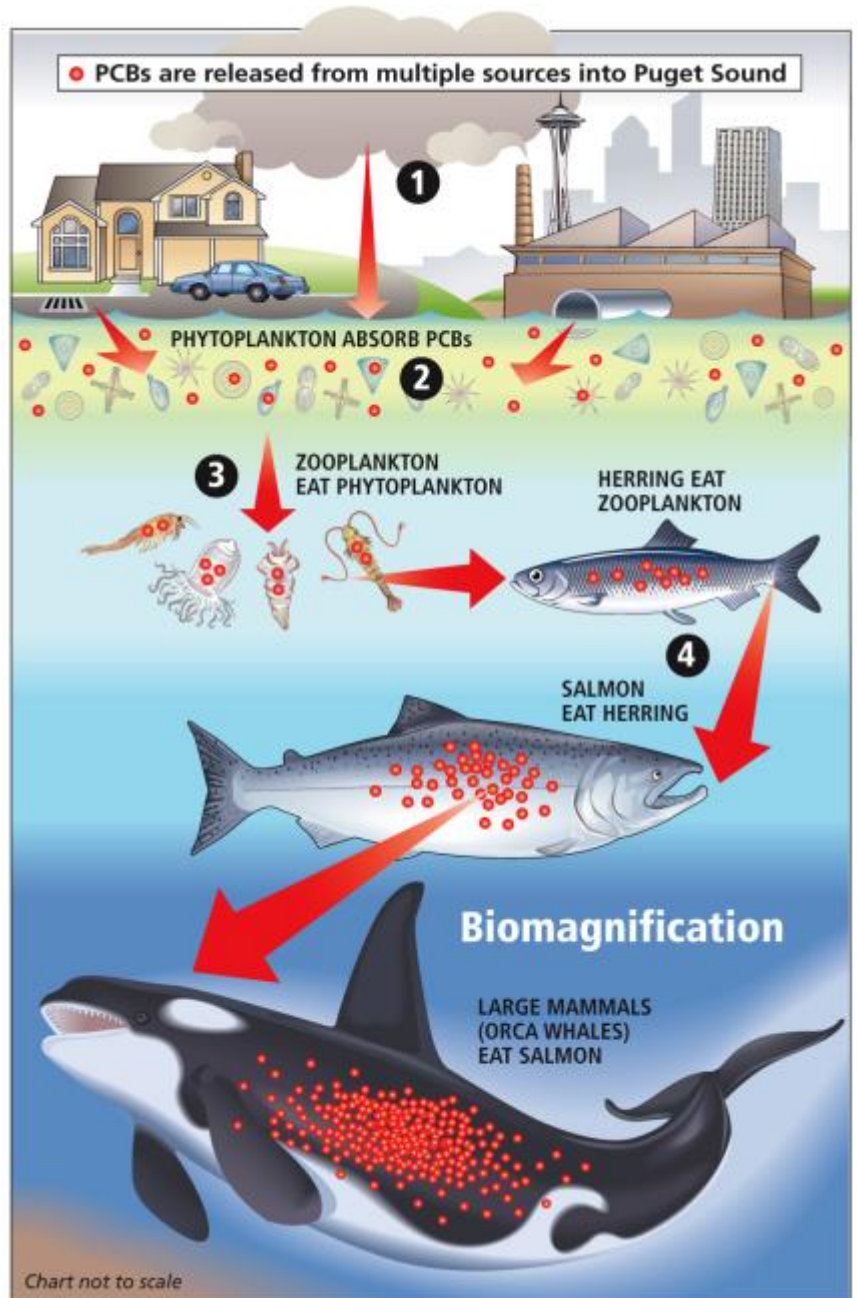


Photo by WDFW

Wildlife's Toxics Biological Observation System (TBIOS) team monitors the geographic extent and magnitude of toxic contaminants in marine and

[invasive species \(/species-habitats/invasive\)](#)

salmonid species in Puget Sound and Washington's Pacific coast. We evaluate and track complex patterns of pollution in these ecosystems using a number of indicator species within the food web, representing a wide range of habitat and movement patterns. Results from these studies help guide efforts to protect fish and shellfish health, ensure seafood safety, and promote ecosystem recovery.

[Wildlife diseases \(/species-habitats/diseases\)](#)

[Toxics Biological Observation System \(TBIOS\) \(/species-habitats/science/marine-toxics/tbios\)](#)

[Amphibians and reptiles of Washington \(/species-habitats/amphibians-reptiles\)](#)

WDFW'S TBIOS team monitors the geographic extent and magnitude of toxic contaminants in fish and shellfish living in Puget Sound and Washington's coast.

[Study design \(/species-habitats/science/marine-toxics/study-design\)](#)

[Marine toxic contaminants \(/species-habitats/science/marine-toxics\)](#)

TBIOS monitors spatial and temporal trends of contaminant exposure in Puget Sound fish and shellfish and the effects of that exposure on the health of these resources.

[Sampling locations \(/species-habitats/science/marine-toxics/sampling-locations\)](#)

[Wildlife viewing \(/species-habitats/wildlife-viewing\)](#)

Locations where TBIOS collects and evaluates levels of contaminants in various fish and shellfish species.

[Indicator species \(/species-habitats/science/marine-toxics/species-monitored\)](#)

TBIOS monitors toxic contaminants in a number of indicator species within the food web, including Pacific herring, English sole, blue mussels, and Pacific salmon.

[Contaminants monitored \(/species-habitats/science/marine-toxics/contaminants-monitored\)](#)

TBIOS monitors a wide range of toxic contaminants such as PCBs, PBDEs, DDTs, PAHs, inorganic metals and chemicals of emerging concern.

[Publications \(/species-habitats/science/marine-toxics/publications\)](#)

TBiOS publications, reports and Quality Assurance Project Plans (QAPPs).



About

Top tasks

Log in to the WILD licensing website (<https://fishhunt.dfw.wa.gov/#/login>)

Get razor clam information ([/fishing/shellfishing-regulations/razor-clams](#))

Event calendar ([/events](#))

Submit a photo ([/share](#))

Report a violation ([/about/enforcement/report](#))

Report a website error ([/website-error-report](#))

WDFW

([/about](#))

Contact us ([/about/contact](#))

Regional offices ([/about/regional-offices](#))

Enforcement ([/about/enforcement](#))

Media resources ([/about/contact/media](#))

Fish and Wildlife Commission ([/about/commission](#))

Public Records Requests ([/administration/public-records](#))

Jobs at WDFW ([/about/jobs](#))

Stay connected

WDFW @TheWDFW

WDFW @WDFW
Police

TheWDFW WDFW Blog

Join our email lists LinkedIn

Rule making
(/about/
regulations)

© 2024 All rights reserved.