

Elizabeth Aseltine

You should do something similar to what California does to incentivize recycling. They charge a tax on drinks that are canned or bottled and then pay that back when consumers recycle.

Consumers would take certain recycled material to centers for reimbursement and place the rest in the recycling can.

Questions About Consumer Recycling and Recycling Centers

What is California Refund Value?

The California Refund Value (CRV) is the amount paid to consumers when they recycle beverage containers at certified recycling centers. The minimum refund value established for each type of eligible beverage container is 5 cents for each container under 24 ounces and 10 cents for each container 24 ounces or greater.

What is a recycling center?

A recycling center is an operation certified by the Department to accept empty beverage containers and pay CRV to consumers. Recycling centers are operated by independent businesses, not the State of California.

Where can I find the nearest recycling center?

There are approximately 2,000 certified recycling centers in California. Call 1-800-RECYCLE or visit our online recycling center locator to find the certified recycling center nearest you.

What other recycling options are there?

In addition to a certified recycling center, consumers can donate recyclables to a community service program, a dropoff or collection program, or a curbside recycling program. As with recycling centers, these programs are operated by independent businesses or local governments, not the State of California.

How much do recycling centers pay per pound for cans and bottles?

Currently, state certified recycling centers pay a minimum of \$1.65 CRV for aluminum cans; \$1.33 CRV for clear PET plastic bottles; \$0.58 CRV for HDPE plastic bottles (similar to the large water jugs); and \$0.10 CRV for glass bottles. These CRV per pound rates are periodically adjusted, with new rates taking effect January 1 and July 1. In addition to the CRV, recyclers may also pay a scrap value, which may also fluctuate.

Can recycling centers pay less than the refund value for redeemed containers?

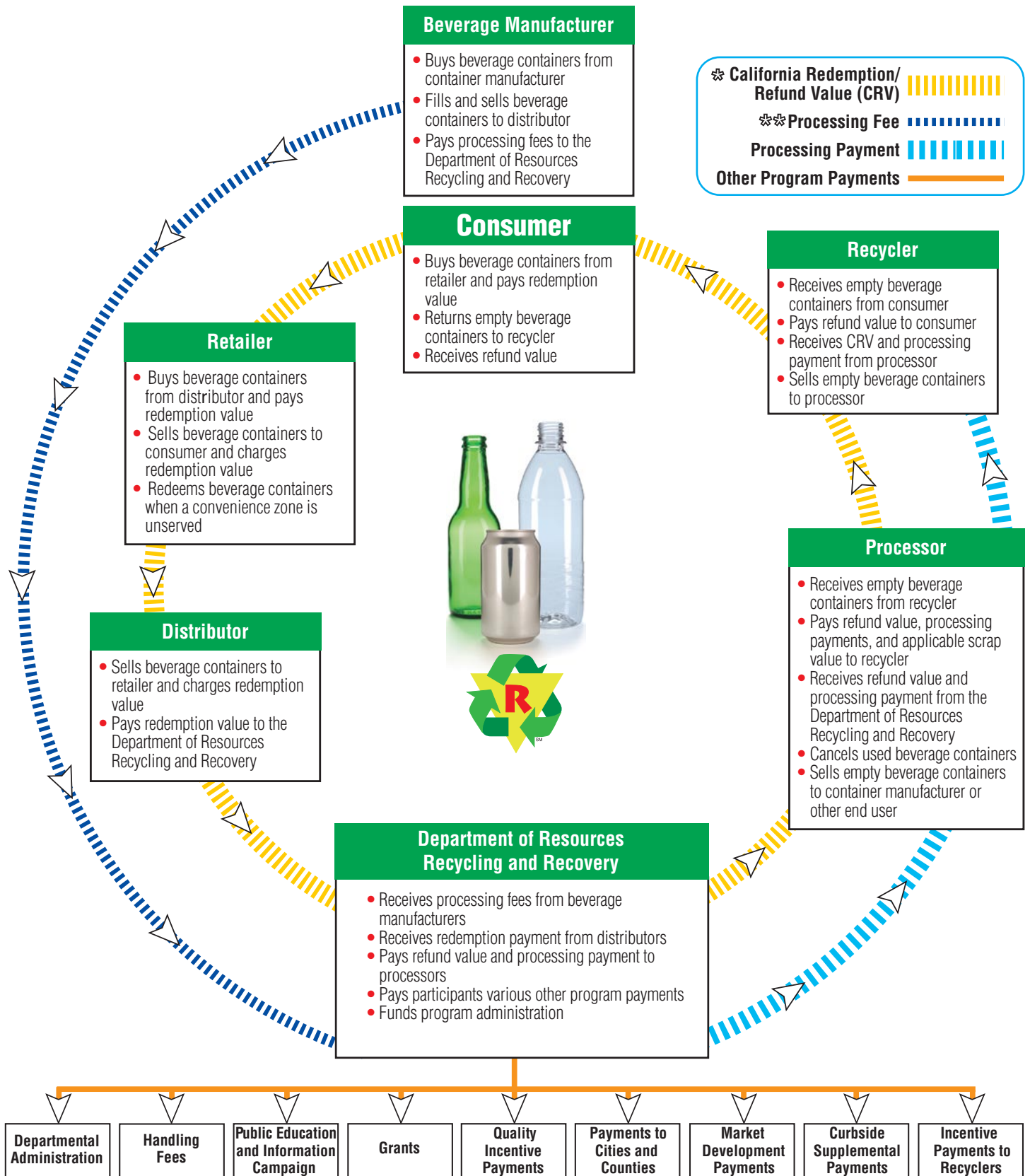
Yes, if the material is contaminated. Operators of certified recycling centers must inspect each load of containers to determine whether it is eligible for CRV. Recycling centers have the option to refuse to accept containers which, in their opinion, are excessively contaminated with dirt, moisture, or other foreign substances. Alternatively, recycling centers may adjust downward the CRV per pound used to calculate the payment by the ratio of such substances to empty beverage containers. In this circumstance, the consumer has the right to accept the discounted refund and/or scrap price, to separate refund from nonrefund material, or to take the material back.

How do I know that the scales at a recycling center are accurate?

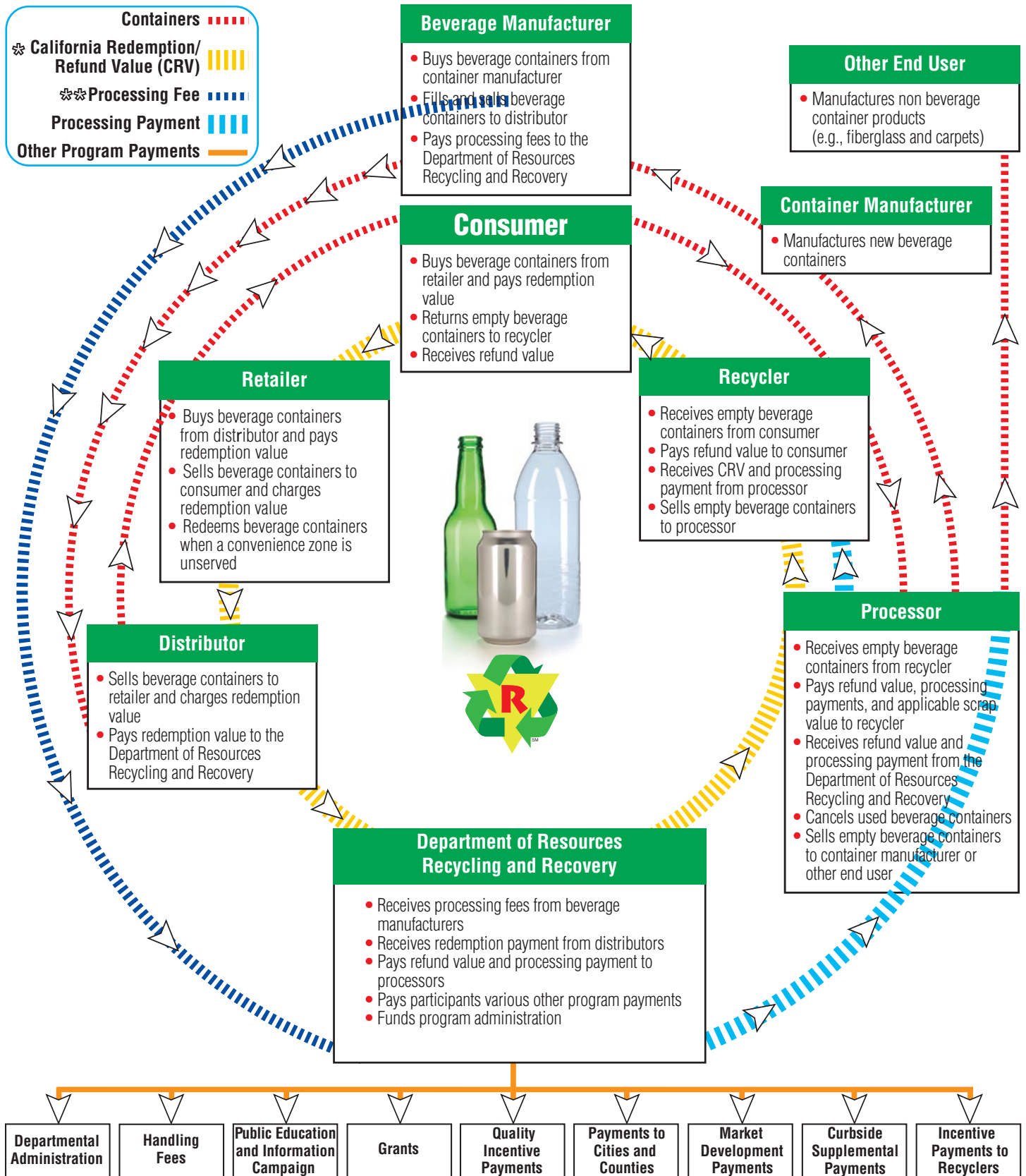
Certified recycling centers are not official "weighmasters." However, they are required to weigh materials that have been presented for redemption on a scale or other device that has been properly approved, tested, and sealed by the local county department of weights and measures. During

inspections and onsite visits, CalRecycle personnel verify that recyclers' scales bear proper seals. It is unlawful, and punishable as a misdemeanor, for any person to use for commercial purposes a scale that is "incorrect." Suspected violations should be referred to the appropriate county department of weights and measures, which are ultimately responsible for ensuring the accuracy of recycling center scales.

[https://calrecycle.ca.gov/bevcontainer/programinfo/faq/#:~:text=The California Refund Value \(CRV,container 24 ounces or greater.](https://calrecycle.ca.gov/bevcontainer/programinfo/faq/#:~:text=The California Refund Value (CRV,container 24 ounces or greater.)



NOTES: ❄ California Redemption Value is paid when a beverage container is purchased. California Refund Value is received when a beverage container is returned for recycling. CRV is used to reference both terms.
 ❄❄ Processing payments are paid to recyclers equaling the difference between the average cost to recycle and the average scrap value received. Processing fees are equal to a percentage of processing payments ranging from 10 to 65 percent.



NOTES: California Redemption Value is paid when a beverage container is purchased. California Refund Value is received when a beverage container is returned for recycling. CRV is used to reference both terms.

Processing payments are paid to recyclers equaling the difference between the average cost to recycle and the average scrap value received. Processing fees are equal to a percentage of processing payments ranging from 10 to 65 percent.