



STATE OF WASHINGTON  
**DEPARTMENT OF ECOLOGY**

Richland Field Office

3100 Port of Benton Blvd., Richland, WA 99354 • 509-372-7950

February 17, 2023

23-NWP-026

Ricardo Maestas, WIPP Group Staff Manager  
Hazardous Waste Bureau - New Mexico Environment Department  
2905 Rodeo Park Drive East, Building 1  
Santa Fe, New Mexico 87505-6303

Re: Public Comment Period and Opportunity to Request a Public Hearing on the Draft  
Hazardous Waste Facility Permit for the Waste Isolation Pilot Plant in Carlsbad,  
New Mexico, EPA Identification Number: NM4890139088

Dear Ricardo Maestas:

The Department of Ecology (Ecology) would like to submit this comment in response to two of New Mexico Environment Department's (NMED) proposed changes to the draft Waste Isolation Pilot Plant (WIPP) Permit that may limit The Department of Energy's (USDOE) ability to follow through on legal obligations regarding the disposal of Resource Conservation and Recovery Act (RCRA) Transuranic Mixed (TRUM) waste currently on the Hanford Nuclear Site located in Eastern Washington.

Ecology refers specifically to the proposed permit changes listed in NMED's Fact Sheet as Topics 1 Closure and 2 Permit Revocation, which could lead to early closure of the WIPP under certain circumstances. In effect, removing the only disposal pathway in the nation for the TRUM waste on the Hanford Site.

The safe and effective cleanup of the Hanford Site will be impacted by USDOE failing to meet their obligations to NMED as outlined in the draft WIPP Permit. Ecology requests USDOE and NMED ensure all necessary conditions are met to avoid closure of WIPP earlier than anticipated. Ecology has based USDOE's legal obligations regarding the management of TRUM waste on the continued acceptance and emplacement of TRUM waste at WIPP through a series of milestones, initially created on December 31, 1996.

Ecology supports NMED in the request for an accurate inventory of all TRUM waste awaiting clean-up across the United States that would be emplaced at WIPP. Ecology also agrees that transparency and a full accounting of TRUM waste is needed to allow state and federal agencies to efficiently manage the process of treatment and disposal. The effective clean-up of mixed waste is a colossal nation-wide project that can only be successful with cooperation among the states.

Ecology seeks to aid both NMED and USDOE in this endeavor, and we therefore submit the current accounting of the Hanford TRUM waste as outlined in the legally binding agreement entered by Ecology, USDOE, and United States Environmental Protection Agency. *The Hanford Federal Facility Agreement and Consent Order (Tri-Party Agreement)* aims to achieve compliance with the Comprehensive Environmental Response Compensation and Liability Act (CERCLA) remedial action provisions and RCRA requirements.

Within the *Tri Party Agreement Attachment 2: Action Plan*, USDOE has entered a compliance schedule under [Appendix D - Work Schedule Milestones and Target Dates Including Designation of Lead Regulatory Agency](#), specifically to complete some of the following under the M-091-00 Milestone Series:

- M-091-00, Complete the treatment to Land Disposal Restriction (LDR) treatment standards for all Hanford Site RCRA Mixed Low-Level Waste (MLLW) and TRUM waste (in above ground storage as of June 30, 2009 and in retrievable storage) by September 30, 2050.
- M-091-48, Complete the offsite shipment of all TRUM waste (in above ground storage as of June 30, 2009 and in retrievable storage) by September 30, 2050.

Within the M-091-00 milestone series USDOE is required to update the *M-091 Transuranic Mixed and Mixed Low-Level Waste Project Management Plan HNF-19169, Revision 24* (Enclosure). The project management plan identifies the following TRUM waste at the Hanford Site:

- 2,682 m<sup>3</sup> of retrievably stored waste remaining to be retrieved from Low Level Burial Grounds 218-E-12B, 218-W-3A, 218-W-4B, and 218-W-4C. The M-091 Project Management Plan states the retrievals will restart in 2031 and be completed in 2037.
- 3,766 m<sup>3</sup> of TRUM waste made certifiable as of March 30, 2022 in above ground storage.
- ~5000 m<sup>3</sup> of TRUM waste requiring to be processed into certifiable containers as of Fiscal Year 2022. The processing of TRUM waste in above ground storage is planned to be completed by Fiscal Year 2047.
- Section 7 *TRU and TRUM Waste Generated from CERCLA Cleanup Actions* and *Appendix E Out Year CERCLA Cleanup Actions* provide information on the anticipated volumes of TRU or TRUM waste from CERCLA cleanup actions.

Ecology again requests USDOE and NMED ensure all necessary conditions are met to avoid closure of WIPP earlier than anticipated, which would support USDOE's legal obligations regarding the management and disposal of TRUM waste that is currently on the Hanford Site.

Ricardo Maestas, WIPP Group Staff Manager  
February 17, 2023  
Page 3 of 3

23-NWP-026

Ecology thanks you for this opportunity to provide public comment on the proposed permit changes and looks forward to collaborating with NMED in the future.

If there are any questions, please contact Edward Holbrook, Waste Management Section Manager, at [edward.holbrook@ecy.wa.gov](mailto:edward.holbrook@ecy.wa.gov) or (509) 940-7619 or Debra Alexander, Tri-Party Agreement M-091 Project Manager, at [debra.alexander@ecy.wa.gov](mailto:debra.alexander@ecy.wa.gov) or (509) 212-3505.

Sincerely,

A handwritten signature in black ink, appearing to read 'Edward Holbrook', with a red checkmark or flourish at the end.

Edward Holbrook  
Waste Management Section Manager  
Nuclear Waste Program

lb

Enclosure: HNF-19169, dated May 2022, *M-091 Transuranic Mixed and Mixed Low-Level Waste Project Management Plan, Revision 24*

cc electronic w/enc:

David Einan, EPA  
Ingrid Colton, USDOE  
Kelly Ebert, USDOE  
Mark French, USDOE  
Glyn Trenchard, USDOE  
Debra Alexander, Ecology  
Edward Holbrook, Ecology  
Laura Morgan, Ecology  
Stephanie Schleif, Ecology  
Ed Soto, Ecology  
USDOE Correspondence Control

# M-091 Transuranic Mixed and Mixed Low-Level Waste Project Management Plan

Prepared for the U.S. Department of Energy  
Assistant Secretary for Environmental Management

Contractor for the U.S. Department of Energy  
under Contract 89303320DEM000030



**P.O. Box 1464**  
**Richland, Washington 99352**

# M-091 Transuranic Mixed and Mixed Low-Level Waste Project Management Plan

E. Meegan  
Central Plateau Cleanup Company LLC (CPCC)

Date Published  
May 2022

Prepared for the U.S. Department of Energy  
Assistant Secretary for Environmental Management

Contractor for the U.S. Department of Energy  
under Contract 89303320DEM000030

 **CPC** Co  
Central Plateau  
Cleanup Company  
**P.O. Box 1464**  
**Richland, Washington 99352**

**APPROVED**

*By Sarah Harrison at 9:45 am, May 11, 2022*

---

Release Approval

Date

**TRADEMARK DISCLAIMER**

Reference herein to any specific commercial product, process, or service by tradename, trademark, manufacturer, or otherwise, does not necessarily constitute or imply its endorsement, recommendation, or favoring by the United States Government or any agency thereof or its contractors or subcontractors.

This report has been reproduced from the best available copy.

Printed in the United States of America

## Executive Summary

The Hanford Site, managed by the U.S. Department of Energy (DOE), produced about 60 percent of the United States' plutonium from the mid-1940s to the late 1980s in support of national defense efforts. Much of the waste and contaminated materials from the Hanford Site defense mission remains on the Central Plateau of the Hanford Site.

The *Hanford Federal Facility Agreement and Consent Order* (Ecology et al., 1989a),<sup>1</sup> commonly known as the Tri-Party Agreement, is a legal agreement between the Washington State Department of Ecology, the U.S. Environmental Protection Agency, and DOE (hereinafter called the Tri-Parties) that identifies cleanup actions and schedules, referred to as milestones, to manage a portion of this remaining waste and contaminated material.

The scope of the M-091 Milestone series (Ecology et al., 1989b, *Hanford Federal Facility Agreement and Consent Order Action Plan*)<sup>2</sup> is to complete removal of the retrievably stored waste from the burial grounds and dispose of the mixed low-level waste and transuranic mixed waste in storage. When these milestones are complete, DOE will have successfully treated the mixed low-level waste and shipped the transuranic mixed waste offsite for disposal.

The Tri-Parties finalized a revision to the M-091 Milestone series in 2021, via two Tri-Party Agreement Change Control Forms (M-91-19-02<sup>3</sup> and M-091-19-03<sup>4</sup>). The changes were put through the DOE Public Involvement Plan and officially incorporated into the Tri-Party Agreement in fiscal year 2021. The changes to the M-091 Milestone series are significant. Most notably, M-091-48, which specifies the date by which offsite shipment of all M-091 transuranic mixed waste must be completed, was adjusted from September 30, 2030 to September 30, 2050. The new completion date aligns with the planned closure date for

---

<sup>1</sup> Ecology, EPA, and DOE, 1989a, *Hanford Federal Facility Agreement and Consent Order*, State of Washington, Department of Ecology, U.S. Environmental Protection Agency, and U.S. Department of Energy, Olympia, Washington. Available at: <http://www.hanford.gov/?page=81>.

<sup>2</sup> Ecology, EPA, and DOE, 1989b, *Hanford Federal Facility Agreement and Consent Order Action Plan*, State of Washington, Department of Ecology, U.S. Environmental Protection Agency, and U.S. Department of Energy, Olympia, Washington. Available at: <http://www.hanford.gov/?page=82>.

<sup>3</sup> M-91-19-02, 2021, Federal Facility Agreement and Consent Order change Control Form: Establish Due Date of Major Milestone M-091-00 in TPA Appendix D, dated October 1, U.S. Department of Energy, Richland Operations Office, U.S. Environmental Protection Agency, and Washington State Department of Ecology, Richland, Washington. Available at: <https://pdw.hanford.gov/document/AR-16826>.

<sup>4</sup> M-91-19-03, 2021, Federal Facility Agreement and Consent Order change Control Form: Modification of M-091 Series Milestones and Target Dates in TPA Appendix D, dated September 22, U.S. Department of Energy, Richland Operations Office, and Washington State Department of Ecology, Richland, Washington. Available at: <https://pdw.hanford.gov/document/AR-16827>.

the Waste Isolation Pilot Plant near Carlsbad, New Mexico. Other milestones in the M-091 series were adjusted to guide progress toward satisfaction of M-091-48, given the adjusted completion date.

This Project Management Plan contains the status of work completed and outlines the DOE strategy for completing the remaining work in the M-091 Milestone series.



## Contents

<b>1</b>	<b>Project Overview .....</b>	<b>1-1</b>
1.1	Goals and Objectives.....	1-1
1.2	Scope .....	1-2
1.3	Management Plan Overview .....	1-3
1.4	Status of Milestones .....	1-9
<b>2</b>	<b>Acquisition of Necessary Capabilities .....</b>	<b>2-1</b>
<b>3</b>	<b>Retrieval and Designation of Retrievably Stored Waste (M-091-49) .....</b>	<b>3-1</b>
3.1	Status and Annual Volume Projections for Retrieval of Retrievably Stored Waste .....	3-1
3.2	Post-Retrieval Activities.....	3-1
<b>4</b>	<b>Certifiable TRUM Waste and MLLW Treatment (M-091-47).....</b>	<b>4-1</b>
4.1	Certifiable TRUM Waste .....	4-1
4.1.1	Status of Certifiable TRUM Waste.....	4-1
4.1.2	Processing Approach to Create Certifiable Containers of TRUM Waste.....	4-3
4.2	Treatment of MLLW .....	4-5
4.2.1	Status and Annual Volume Projections for Treatment of MLLW .....	4-5
4.2.2	MLLW Characterization.....	4-5
4.2.3	Treatability Approach to MLLW .....	4-6
4.2.4	Treatment Capabilities for MLLW .....	4-6
4.2.4	Disposal of MLLW.....	4-6
<b>5</b>	<b>Certification and Shipment of TRUM Waste .....</b>	<b>5-1</b>
5.1	Status and Annual Volume Projections for Certification and Shipment of TRUM Waste .....	5-1
5.2	Certification and Shipment of TRUM Waste to WIPP .....	5-1
5.2.1	CCP Certification Program .....	5-3
5.2.2	CH TRUM Waste Shipments to WIPP.....	5-3
5.2.3	RH TRUM Waste Shipments to WIPP .....	5-4
<b>6</b>	<b>Storage Capacity .....</b>	<b>6-1</b>
6.1	CWC/WRAP Storage .....	6-1
6.2	T Plant Storage .....	6-2
<b>7</b>	<b>TRU and TRUM Waste Generated from CERCLA Cleanup Actions.....</b>	<b>7-1</b>
7.1	Status of Approved CERCLA Cleanup Actions Generating TRU and TRUM Waste.....	7-2
7.1.1	100-K Basin .....	7-3
7.1.2	U Plant .....	7-3
7.1.3	618-11 Burial Ground (300-FF-2) .....	7-4
7.1.4	200-CW-5, 200-PW-1, 200-PW-3, and 200-PW-6 OUs.....	7-4

7.1.5 224B Plutonium Concentration Facility ..... 7-6

7.1.6 224T Plutonium Concentration Facility..... 7-6

7.2 CERCLA TRU and TRUM Shipments to WIPP ..... 7-6

7.3 Status of Future CERCLA Cleanup Decisions with the Potential to Generate  
TRU and TRUM Waste ..... 7-7

7.4 Summary of Disposition Approaches per Waste Form ..... 7-7

7.4.1 Soil, Gravel, and Rock ..... 7-7

7.4.2 Debris ..... 7-7

7.4.3 Sludge ..... 7-8

**8 Project Control Elements ..... 8-1**

8.1 Funding Profile and Project Work Breakdown Structure..... 8-1

8.2 Project Schedule ..... 8-3

8.3 Project Constraints ..... 8-4

8.3.1 Budget ..... 8-4

8.3.2 Delay in Retrieval or Processing Operations ..... 8-4

8.3.3 New Capabilities ..... 8-4

8.3.4 Higher Contamination Levels than Expected ..... 8-4

8.3.5 Increase in RSW Volume ..... 8-4

8.3.6 Increase in Volume of TRUM Waste to Be Shipped to WIPP ..... 8-5

8.3.7 Final Certification and Shipment ..... 8-5

8.4 Key Deliverables/Products ..... 8-5

8.5 Performance Measurement ..... 8-5

8.6 Project Interface Control ..... 8-5

8.7 Reporting ..... 8-6

8.8 Change Management ..... 8-7

8.8.1 Tri-Party Agreement Change Management ..... 8-7

8.8.2 Baseline Change Management ..... 8-7

**9 References ..... 9-1**

## Appendices

**A Glossary ..... A-i**

**B Applicable Regulatory Requirements ..... B-i**

**C Descriptions of Low-Level Burial Grounds with Retrievably Stored Waste..... C-i**

**D Basis for Figures ..... D-i**

**E Out-Year CERCLA Cleanup Actions ..... E-i**

## Figures

Figure 1-1.	Aerial View of Hanford Site Looking South to the 200 West Area (April 2010) .....	1-4
Figure 1-2.	DOE Strategy to Complete the M-091 Work Scope.....	1-7
Figure 3-1.	Volume Projections for RSW Retrieval.....	3-2
Figure 4-1.	OSA-A Aerial View Looking East – December 2021 .....	4-2
Figure 4-2.	OSA-A Aerial View Looking East – September 2013 .....	4-2
Figure 4-3.	Repackaging of TRUM Waste at Perma-Fix Northwest .....	4-3
Figure 4-4.	Certifiable Volume Projections of TRUM Waste (M-091 Scope) .....	4-4
Figure 5-1.	Projection of TRUM Waste Shipments to WIPP.....	5-2
Figure 5-2.	Loading a TRUPACT-II with TRUM Waste Drums at WRAP .....	5-3
Figure 5-3.	TRUPACT-II Shipment of TRUM Waste to WIPP .....	5-4
Figure 8-1.	RL-0013 Annual Funding Profile .....	8-2

## Tables

Table 1-1.	Status of M-091 Milestones.....	1-9
Table 4-1.	Certifiable TRUM Volumes .....	4-1
Table 6-1.	Facility Storage Capacity.....	6-1
Table 7-1.	Summary of OUs and Facilities.....	7-2
Table 7-2.	TRU and TRUM Waste Forecast from CERCLA Cleanup Actions .....	7-3

This page intentionally left blank.

## Terms

AK	acceptable knowledge
AMWTP	Advanced Mixed Waste Treatment Project
AR	Administrative Record
CBFO	DOE Carlsbad Field Office
CCP	Central Characterization Program
CD	Critical Decision
CERCLA	<i>Comprehensive Environmental Response, Compensation, and Liability Act of 1980</i>
CH	contact-handled
CWC	Central Waste Complex
CY	calendar year
DOE	U.S. Department of Energy
Ecology	Washington State Department of Ecology
EPA	U.S. Environmental Protection Agency
ERDF	Environmental Restoration Disposal Facility
FY	fiscal year
IRA	Interim Response Action
LDR	land disposal restriction
LLBG	low-level burial ground
LLW	low-level waste
MILCC™	Mobile ISOCS™ Large Container Counter
MLLW	mixed low-level waste
MWT	mixed waste trench
NDA	nondestructive analysis
NDE	nondestructive examination
OSA	outside storage area
OU	operable unit
PFP	Plutonium Finishing Plant
PMP	project management plan

RAWP	removal action work plan
RCRA	<i>Resource Conservation and Recovery Act of 1976</i>
RH	remote-handled
RI/FS	Remedial Investigation and Feasibility Study
ROD	record of decision
RSW	retrievably stored waste
RTD	removal, treatment (as needed), and disposal
SAP	sampling and analysis plan
SLB2	standard large box 2
SWOC	Solid Waste Operations Complex
SWB	standard waste box
TPA	Tri-Party Agreement
Tri-Parties	DOE, EPA, and Ecology
Tri-Party Agreement	<i>Hanford Federal Facility Agreement and Consent Order</i>
TRU	transuranic
TRU/M	transuranic and/or transuranic mixed
TRUM	transuranic mixed
TRUPACT-II	Transuranic Package Transporter Model II
TRUPACT-III	Transuranic Package Transporter Model III
TSD	treatment, storage, and disposal
VPU	vertical pipe unit
WBS	work breakdown structure
WIPP	Waste Isolation Pilot Plant
WMA	waste management area
WRAP	Waste Receiving and Processing (Facility)

## 1 Project Overview

The Hanford Site, managed by the U.S. Department of Energy (DOE), produced about 60 percent of the United States' plutonium from the mid-1940s to the late 1980s in support of national defense efforts. The 1,518 km<sup>2</sup> (586 mi<sup>2</sup>) site is located in southeastern Washington State. The Central Plateau covers approximately 194 km<sup>2</sup> (75 mi<sup>2</sup>) in the center of the Hanford Site. Much of the waste and contaminated materials from the Site's defense mission remains on the Central Plateau.

The *Hanford Federal Facility Agreement and Consent Order* (Ecology et al., 1989a), hereinafter called the Tri-Party Agreement, is a legal agreement between the Washington State Department of Ecology (Ecology), the U.S. Environmental Protection Agency (EPA), and DOE (hereinafter the Tri-Parties) that identifies cleanup actions and schedules, referred to as milestones. The scope of the M-091 Milestone series (Ecology et al., 1989b, *Hanford Federal Facility Agreement and Consent Order Action Plan*, hereinafter referred to as the Tri-Party Agreement Action Plan) is to complete retrieval and eliminate the backlog of Hanford Site mixed low-level waste (MLLW) and transuranic mixed (TRUM) waste in storage. When these milestones are completed, DOE will have retrieved the retrievably stored waste (RSW) from the burial grounds, treated and disposed of M-091 MLLW, repackaged M-091 TRUM waste into certifiable containers, and shipped M-091 TRUM waste offsite for disposal.

This revision of the M-091 TRUM and MLLW Project Management Plan (PMP) is the first since significant changes to the Milestone series were finalized in fiscal year (FY) 2021. The most significant change is the adjustment to align the completion of the M-091 Milestone series with the closure of the Waste Isolation Pilot Plant (WIPP) near Carlsbad, New Mexico, in 2050. This schedule adjustment brings the risk profile of the project down by eliminating the need to execute multiple Capital Asset Projects concurrently. Additionally, the revised milestone schedule will allow additional time to develop capabilities for the challenging remote-handled (RH) waste retrieval, processing, and shipping activities that fall under the M-091 purview.

DOE developed this PMP in accordance with the Tri-Party Agreement (Ecology et al., 1989a), Section 11.5, "Waste Material Stream Project Management Work Plans," prepared under Milestone series M-090-00, M-091-00, and M-092-00 of the Tri-Party Agreement Action Plan (Ecology et al., 1989b). This PMP contains the status of completed work along with the DOE plan to accomplish the remaining work under the M-091 Milestone series.

A goal of the Tri-Parties is to integrate the Hanford Site cleanup activities to the extent possible to enable efficient and effective management of waste. The three agencies agreed to integrate the plan for managing transuranic (TRU) and TRUM waste under the *Comprehensive Environmental Response, Compensation, and Liability Act of 1980* (CERCLA) cleanup actions, with the plan to manage similar waste forms under the M-091 work scope. This PMP also addresses the acquisition of capabilities necessary to prepare TRU and TRUM waste generated under CERCLA cleanup actions for disposal at WIPP.

Specialized words used in the waste management plan are defined in Appendix A and applicable regulatory requirements are given in Appendix B.

### 1.1 Goals and Objectives

The goal of the M-091 Milestone series is to complete the treatment to land disposal restriction (LDR) treatment standards for Hanford Site *Resource Conservation and Recovery Act of 1976* (RCRA) MLLW and repackaging of TRUM waste. The immediate focus of the milestones is on treating and repackaging waste that has been retrieved and stored in drums and boxes aboveground. The milestones set a schedule for developing additional capabilities required for waste treatment, certification, and shipment

for disposal. These capabilities will be developed such that they will also be suitable for use in preparing M-091 RSW for disposal or shipment offsite.

The M-091 Milestone series sets a deadline of 2050 to remove M-091 TRUM waste from the Hanford Site. When the M-091 Milestone series is completed, the M-091 RSW will have been retrieved from the burial grounds; M-091 MLLW will have been treated and disposed of; and M-091 TRUM waste will have been repackaged, certified, and shipped offsite for disposal.

## 1.2 Scope

The scope of the M-091 Milestone series includes MLLW and TRUM waste in aboveground storage as of June 30, 2009, and RSW in the low-level burial grounds (LLBGs). Waste in aboveground storage is defined as the waste stored within the Central Waste Complex (CWC), T Plant, and the Waste Receiving and Processing (WRAP) Facility. The RSW is defined as waste that was placed in LLBGs 218-W-4B, 218-W-4C, 218-W-3A, and 218-E-12B after May 6, 1970, and was believed to meet TRU waste criteria when it was placed in one of these burial grounds.

Descriptions and maps of the LLBGs are included in Appendix C. An aerial view of the Hanford Site 200 West Area is presented in Figure 1-1.

The M-091 Milestone series scope is as follows:

- Remove mixed waste containers from Outside Storage Areas (OSAs) A and B (M-091-53B-E, M-091-59).
- Perform an engineering study on the impacts of radiological decay on the cost and schedule for retrieval, processing, certification, and shipment/disposal of RH MLLW and RH TRUM waste (M-091-58).
- Develop capabilities for processing and treatment of TRUM and MLLW waste prior to disposal (M-091-55, M-091-56).
- Complete processing and repackaging activities, resulting in TRUM certification and MLLW treatment (M-091-47 series, M-091-57).
- Retrieval of RSW trench and caisson waste (M-091-54, M-091-49).
- Shipment of TRUM waste to WIPP (M-091-48, M-091-60, M-091-61, M-091-62).

A summary of the CERCLA cleanup actions that have the potential to generate waste with TRU constituents greater than 100 nCi/g, along with projected volumes, is provided in Chapter 7. These wastes are not included within the scope of the M-091 Milestone series.

The currently approved CERCLA cleanup actions generating (or anticipated to generate) transuranic and/or transuranic mixed (TRU/M) waste include the following:

- 100-K Basins
- 221U Facility
- 618-11 Burial Grounds (300-FF-2)
- 200-PW-1 and 200-PW-6 Operable Units (OUs)
- 224B and 224T Plutonium Concentration Facilities



Future CERCLA OUs and facilities with the potential to generate waste with TRU constituents greater than 100 nCi/g during CERCLA actions are summarized in Section 7.3. These OUs and facilities include the following:

- 200-BC-1, B/C Cribs and Trenches OU
- 200-SW-2, Radioactive Landfills Group OU
- 200-WA-1, West Inner Area OU
- 200-DV-1, Deep Vadose Zone OU
- 200-IS-1, Tanks/Lines/Pits/Boxes Waste Group OU
- 200-EA-1, East Inner Area OU
- 200-CP-1, Plutonium Uranium Extraction Plant Canyon and associated past-practice waste site
- 200-CR-1, Reduction and Oxidation Plant Canyon and associated past-practice waste site

Other RCRA actions with potential to generate waste with TRU constituents greater than 100 nCi/g, and are not within the scope of the M-091 Milestone series and not covered in this PMP include the tank farms waste management areas (WMAs) that are covered under the M-045 Milestone series and 11 single-shell tanks. DOE expects to make a classification as to whether the material is TRU waste and to continue Critical Decision (CD) documentation development that will define the technology and infrastructure needed to retrieve, process, and package the waste for disposal. As more information becomes available, any interfaces or impacts to the M-091 scope will be addressed in future revisions of the PMP. The engineering alternative study completed under Milestone M-091-52 (CHPRC-03264, *M-091-52 Alternative Evaluation*) did not consider potential waste from the tank farms.

### 1.3 Management Plan Overview

This revision of the PMP describes the strategy for the completion of the M-091 Milestone series, reflecting the extension of the overall completion date to 2050. The strategy emphasizes the need to provide the necessary capabilities to complete M-091 work scope, while continuing to make progress in treatment and processing of MLLW and TRUM with the currently available capabilities. Figure 1-2 is an illustration of the strategy.

Key elements of the DOE strategy for the completion of the M-091 work scope are as follows:

- Prioritize the treatment and processing of MLLW and TRUM waste. Continued utilization of commercial capabilities to reduce the inventory of MLLW and TRUM waste requiring treatment and processing.
- Select and acquire capabilities necessary to complete the retrieval, treatment, and processing of the MLLW and TRUM waste. The M-091-52 Alternatives Evaluation (CHPRC-03264), completed in FY 2017, provides the foundation for selection of options to move forward. The revisions to the M-091 Milestone series approved in FY 2021 define progress to be made in the acquisition process for retrieval, treatment, and processing in the coming years.



Figure 1-1. Aerial View of Hanford Site Looking South to the 200 West Area (April 2010)

The organization of this PMP aligns with the DOE strategy to complete the M-091 work scope, illustrated in Figure 1-2, as follows:

- Chapter 2 addresses the capabilities necessary to complete the retrieval, treatment, and processing of the MLLW and TRUM waste.
- Chapter 3 addresses the retrieval of RSW.
- Chapter 4 addresses the generation of certifiable TRUM waste and treatment of MLLW.
- Chapter 5 discusses the certification and shipment of TRUM waste to WIPP.
- Chapter 6 provides a discussion of the storage capacity necessary for the storage of M-091 wastes.
- Chapter 7 provides an estimate of the amount of waste generated from CERCLA cleanup activities. This waste is not within the scope of the M-091 Milestone series. It is described in this PMP to provide an overview of the waste disposition challenges included within the efforts to clean up the Hanford Site.
- Chapter 8 describes the DOE project control elements including funding profile for the planning, managing, and performing the M-091 work scope.
- Chapter 9 details the references cited throughout the document.

This page intentionally left blank.

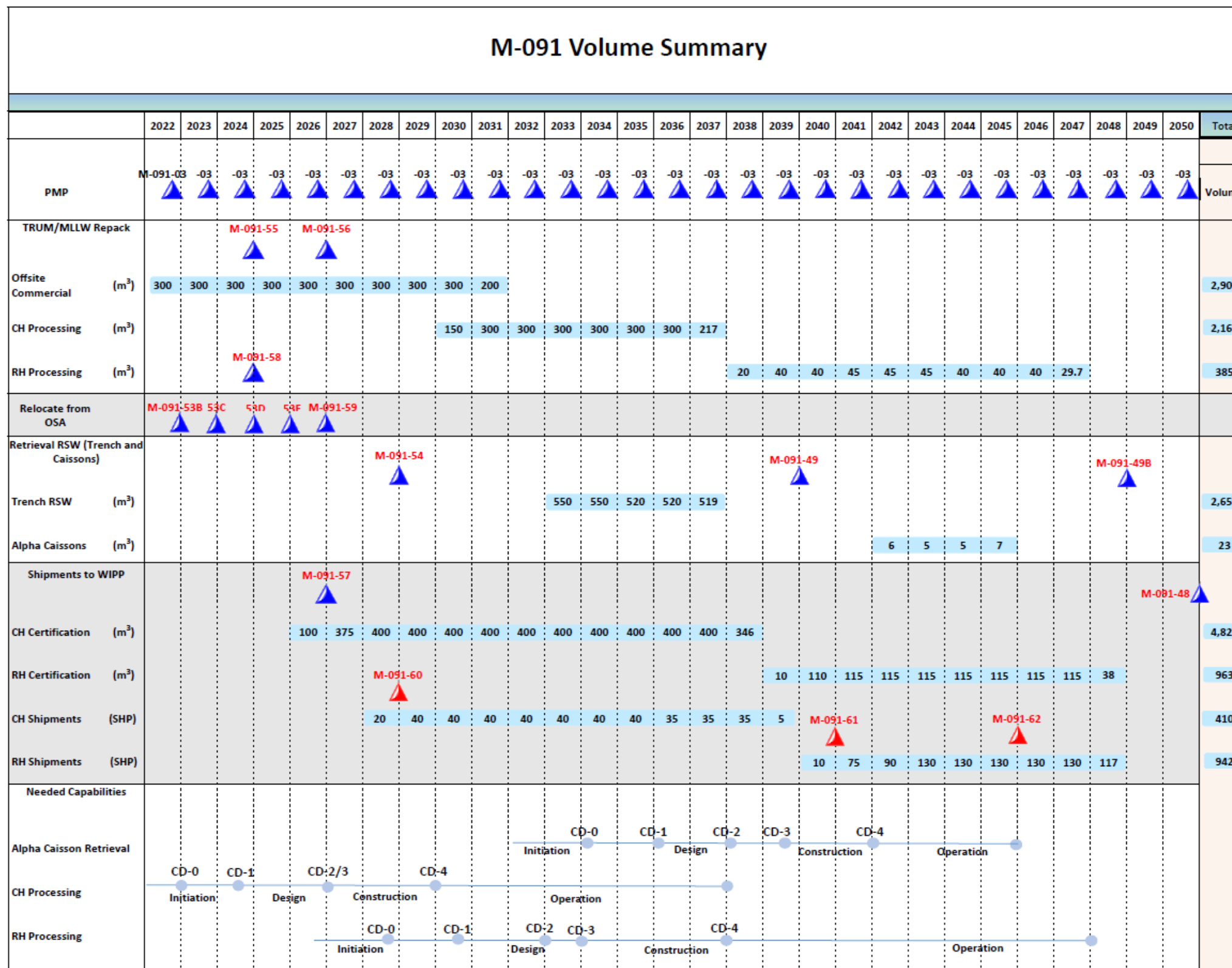


Figure 1-2. DOE Strategy to Complete the M-091 Work Scope

This page intentionally left blank.

## 1.4 Status of Milestones

The status of M-091 Milestones is provided in Table 1-1.

**Table 1-1. Status of M-091 Milestones**

M-091 Milestone	M-091 Milestone Title	Required Completion Date	Status
M-091-47-T01	Certify or treat 280 m <sup>3</sup> (9,888 ft <sup>3</sup> ) of TRUM/MLLW waste.	9/30/2021	Completed
M-091-03P	Submit annual revision of TRUM waste and MLLW PMP to Ecology.	06/30/2022	On Schedule
M-091-47-T02	Certify or treat 280 m <sup>3</sup> (9,888 ft <sup>3</sup> ) of TRUM/MLLW waste. Submit change control form to establish next two annual target dates for certification or treatment of TRUM/MLLW.	9/30/2022	Completed
M-091-47-T03	Certify or treat 280 m <sup>3</sup> (9,888 ft <sup>3</sup> ) of TRUM/MLLW waste.	9/30/2023	On Schedule
M-091-47-T04	Certify or treat 280 m <sup>3</sup> (9,888 ft <sup>3</sup> ) of TRUM/MLLW waste. Submit change control form to establish next two annual target dates for certification or treatment of TRUM/MLLW.	9/30/2024	On Schedule
M-091-48	Complete the offsite shipment of all M-091 TRUM waste	9/30/2050	On Schedule
M-091-49	Complete CH RSW retrieval	9/30/2039	On Schedule
M-091-49B	Complete RH RSW retrieval	9/30/2048	On Schedule
M-091-53A	Remove 10 additional mixed waste containers from OSAs-A/B.	11/30/2021	Completed
M-091-53B thru M-091-53E	Remove 10 additional mixed waste containers from OSAs-A/B per year. Each year's requirement is due on 11/30 of that year.	11/30/2022 through 11/30/2025	On Schedule
M-091-54	Submit to Ecology an Interim Response Action proposal to resume RSW retrieval.	9/30/2028	On Schedule
M-091-55	Submit to Ecology a 30 percent Conceptual Design Report package for the Facility/Capability for CH waste containers.	9/30/2024	On Schedule
M-091-56	Submit to Ecology a permit modification request based on a 90 percent design for the Facility/Capability for CH waste containers.	9/30/2026	On Schedule
M-091-57	Initiate CH certification activities by processing a TRUM container with results meeting the M-091-00 definition of Certification.	9/30/2026	On Schedule
M-091-58	Submit to Ecology an engineering study of the impacts of radiological decay on the cost and schedule for retrieval, processing, certification, and shipment/disposal of all RH MLLW and RH TRUM waste (in aboveground storage as of June 30, 2009, and in retrievable storage).	9/30/2024	On Schedule
M-091-59	Remove all mixed waste containers from OSAs-A/B.	9/30/2026	On Schedule
M-091-60	Initiate treatment to LDR treatment standards for M-091 MLLW & TRUM waste OR initiate certification and shipment of TRUM waste for disposal at WIPP.	9/30/2028	On Schedule
M-091-61	Complete treatment to LDR treatment standards OR shipment to WIPP for disposal for CH M-091 MLLW & TRUM small container waste.	9/30/2040	On Schedule

M-091-62	Complete treatment to LDR treatment standards OR shipment to WIPP for disposal for CH M-091 MLLW & TRUM large container waste.	9/30/2045	On Schedule
----------	--	-----------	-------------

- |         |   |  |      |   |                             |
|---------|---|--|------|---|-----------------------------|
| CH      | = | contact-handled                        | PMP  | = | project management plan     |
| Ecology | = | Washington State Department of Ecology | RH   | = | remote handled              |
| LDR     | = | land disposal restriction              | RSW  | = | retrievably stored waste    |
| MLLW    | = | mixed low-level waste                  | TRUM | = | transuranic mixed           |
| OSA     | = | outside storage area                   | WIPP | = | Waste Isolation Pilot Plant |



This page intentionally left blank.

## 2 Acquisition of Necessary Capabilities

The M-091 Milestone series addresses the retrieval, treatment/processing, shipment, and disposal of MLLW and TRUM wastes. To accomplish the work scope under the milestones, additional capabilities are necessary. The preparation of an engineering alternatives study was the first step in the sequence of M-091 Milestones to provide needed capabilities.

**M-091-52, Completed Engineering alternatives analysis** – CHPRC-03264 was completed under Milestone M-091-52 in August 2017. The alternative evaluation focused on the capability gaps identified in CHPRC-02916, *M-091 Engineering Alternatives Study*, for all waste that is currently in, or anticipated to be stored at, the Hanford Site Solid Waste Operations Complex (SWOC). The alternatives analysis provided evaluations of several potential capabilities to address each gap and recommended a comprehensive set of alternatives. Subsequent milestones will not be bound by the recommendations of the alternatives evaluation. Rather, it will be used as a resource for Tri-Party Agreement milestones regarding the design and construction of the needed capabilities.

The following capabilities are necessary to manage the waste and complete the M-091 Milestone series.

**Removal of large boxes from OSAs-A/B** – M-091 large boxes located in OSAs-A/B must be removed by September 30, 2026, as required by M-091-59. Many of these M-091 large boxes stored in OSAs-A/B will have been removed for treatment at Perma-Fix Northwest pursuant to M-091-53A-E. The large boxes not eligible for treatment and repackaging at Perma-Fix Northwest will remain at SWOC but be relocated to other dangerous waste management units for eventual treatment via the onsite capabilities to be developed for treatment of M-091 waste.

**Retrieval and characterization of the remaining RSW** – The remaining RSW in belowground storage is both contact-handled (CH) and RH waste. M-091-49 dictates that retrieval and designation of CH RSW is to be completed by September 30, 2039. M-091-49B dictates that retrieval and designation of RH RSW (including 200 Area caissons) is completed by September 30, 2048. The RSW is contained in various container types. Previous retrieval experience indicates that the containers may be significantly deteriorated. All retrieved waste must be characterized. Nondestructive examination (NDE) is used to identify the presence of prohibited items in the waste, as well as nondestructive analysis (NDA) to determine if the waste is TRU/M or MLLW. Acceptable knowledge is used for characterization of those containers where NDE/NDA is not possible due to equipment limitations.

Retrieved waste must be processed if NDE or other inspections determine that it does not meet the acceptance criteria of the disposal site. Processing includes the removal or treatment of prohibited items, size reduction, and repackaging

M-091-54 requires an Interim Response Action (IRA) proposal to resume retrieval by September 30, 2028. The IRA will be in the form of a removal action work plan (RAWP) for resuming retrieval of both CH and RH waste in the burial grounds. The RAWP will include an implementation schedule.

**Process noncompliant waste** – M-091 waste must be processed to meet the waste acceptance criteria of the disposal site if it is determined that the criteria have not been satisfied. Milestones M-091-55 and M-091-56 specifically address development of capability to process CH waste containers. M-091-55 requires a 30 percent conceptual design report package by September 30, 2024. M-091-56 continues the design process, calling for a permit modification request to be submitted to Ecology based on a 90 percent design by September 30, 2026.

**Certification of waste** – Certify that waste complies with the disposal site acceptance criteria prior to shipment for disposal. Waste currently in belowground and aboveground storage requires certification.

Additionally, any newly generated TRU or TRUM waste will require certification. The capabilities must be able to handle a variety of containers. M-091-057 requires that CH certification activities are initiated, with a processed TRUM container meeting the M-091-00 definition of “Certification” by September 30, 2026.

**Shipment to disposal** – The TRUM waste will require shipment to WIPP for disposal. MLLW is disposed at the Hanford Site. The WRAP Facility in the 200 West Area of the Hanford Site has previously shipped waste to WIPP in Transuranic Package Transporter Model II (TRUPACT-II) shipping containers. It is expected that these capabilities will be suitable to prepare the majority of CH shipments and can potentially be adapted for RH shipments. The WRAP shipping configuration does not currently support loading of CH standard large boxes (SLB2); however, capability is available in the DOE complex and can be transferred or replicated at Hanford to satisfy the need. Any additional capability needed to enable shipment of RH waste will be identified and included in the scope of the RH processing capability development. Milestone M-091-60 requires DOE to initiate certification and shipment of TRUM waste for disposal at WIPP by September 30, 2028.

### 3 Retrieval and Designation of Retrievably Stored Waste (M-091-49)

DOE has made substantial progress in retrieving RSW included in the scope of the M-091 Milestone series from the burial grounds, which originally contained approximately 15,200 m<sup>3</sup> of RSW. Since retrieval operations began, DOE has successfully retrieved more than 12,700 m<sup>3</sup> of RSW, leaving approximately 2,680 m<sup>3</sup> remaining to be retrieved. The cited volume of RSW remaining has been adjusted from 2,475 m<sup>3</sup>, which was also cited through Revision 21 of this document. DOE is now including a population of classified containers in the total for retrieval, which had been omitted from previous figures.

The RSW is in designated areas in LLBGs 218-E-12B, 218-W-3A, 218-W-4B, and 218-W-4C. Burial Ground 218-W-4B includes four alpha caissons containing RH RSW. The retrieval of RSW has been completed in the 218-W-4C LLBG. Descriptions and maps of these LLBGs are included in Appendix C. Retrieval methods for the difficult to retrieve trenches will be covered through M-091-54. The IRA process includes an engineering evaluation/cost analysis, action memorandum, and a RAWP. Throughout this process documents will be shared with Ecology and the public, as required.

Legacy trench retrieval capabilities are expected to be sufficient to retrieve a significant amount of the remaining TRU and TRUM waste from the LLBGs; however, experience has shown that container-by-container retrieval will not be feasible for waste stored in some of the trenches. A new capability is needed to retrieve waste from the alpha caissons.

#### 3.1 Status and Annual Volume Projections for Retrieval of Retrievably Stored Waste

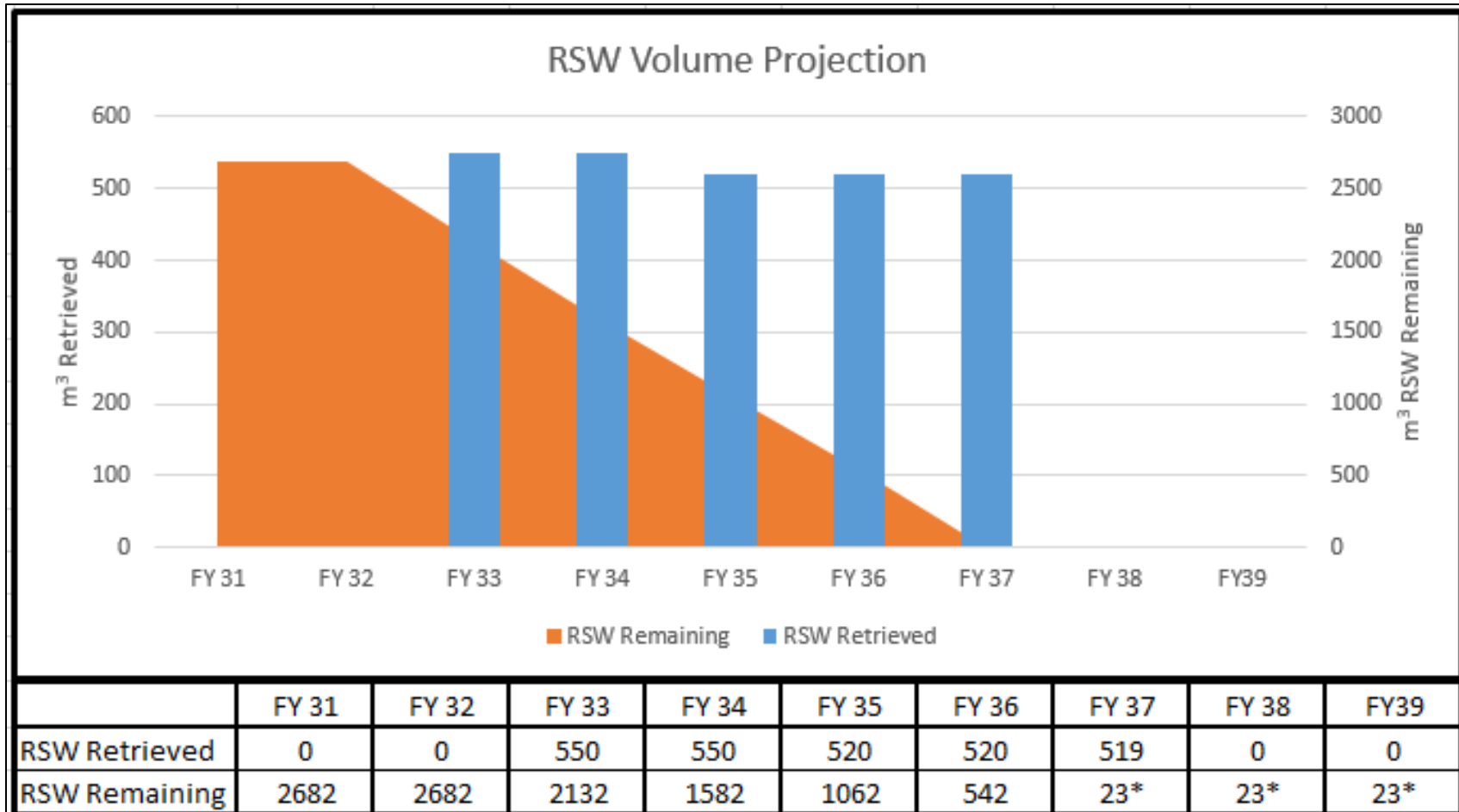
Retrieval operation is in a standby condition, with no RSW retrieved since 2011.

Figure 3-1 presents a summary of the projected timeline for retrieval of RSW. The bars represent the quantity of RSW that is projected to be retrieved during a fiscal year, and the line represents the cumulative volume remaining at the end of a fiscal year.

Under the projected annual funding profile and with the need for implementation of additional capabilities, retrieval of RSW is not anticipated to occur until approximately FY 2033. Milestone M-091-54 requires completion of an IRA proposal in FY 2028 focused on facilities and capabilities needed to resume retrieval activities, including an implementation schedule. Design and construction of the alpha caisson retrieval project are scheduled to be completed in FY 2042, with retrieval of the caisson RH RSW to be completed by the end of FY 2045.

#### 3.2 Post-Retrieval Activities

Once RSW has been removed from the trenches in the LLBGs, information and photographs regarding as-left trench conditions will be collected. Sampling of the soil will commence per the sampling and analysis plans (SAPs) that have been developed to determine and characterize any contaminants released to the burial grounds where RSW has been retrieved. The sampling results will be documented in the Administrative Record (AR).



\*Alpha caisson volume.

See Appendix D of this PMP for information on the basis of the volumes reported in the figure.

**Figure 3-1. Volume Projections for RSW Retrieval**

The following SAPs are for the four LLBGs:

- DOE/RL-2003-48, *218-W-4C Sampling and Analysis Plan*
- DOE/RL-2004-32, *218-E-12B Burial Ground Sampling and Analysis Plan*
- DOE/RL-2004-70, *218-W-4B Burial Ground Sampling and Analysis Plan*
- DOE/RL-2004-71, *218-W-3A Burial Ground Sampling and Analysis Plan*

For the purposes of this PMP, it is assumed that any soil remediation in the trenches where RSW is removed will be addressed as part of the 200-SW-2 OU CERCLA cleanup actions (M-016 Milestone series). There are opportunities to support the 200-SW-2 investigative process through implementation of the SAPs.

This page intentionally left blank.

## 4 Certifiable TRUM Waste and MLLW Treatment (M-091-47)

This chapter addresses the scope of work under Milestone M-091-47 that focuses on repackaging TRUM waste and treating MLLW that has already been retrieved and stored in drums and boxes aboveground.

### 4.1 Certifiable TRUM Waste

This section describes the DOE plan to prepare TRUM waste into a form certifiable for offsite shipment. Existing offsite capabilities at Perma-Fix Northwest will be used to continue to make progress with repackaging large containers into a certifiable configuration. WRAP and T Plant are currently in a standby condition. Existing and legacy capabilities are not adequate to process all the waste currently or expected to be managed at SWOC. Alternatives to provide the needed capability include new or modified onsite processing facilities for both CH and RH waste processing and decay in storage. Subsequent milestones will address the selection of preferred alternatives and the establishment of Tri-Party Agreement milestones (Ecology et al., 1989a) for the design and construction of the needed capabilities.

Onsite and offsite transportation of waste is discussed in Section B1.6.

#### 4.1.1 Status of Certifiable TRUM Waste

Table 4-1 updates the volume of TRUM waste shipped to Perma-Fix Northwest, by year, since last reported. The total TRUM waste treated in calendar year (CY) 2021 through CY 2022 (as of March 31) is 201 m<sup>3</sup>, bringing the total amount of M-091 TRUM waste made certifiable to 3,766 m<sup>3</sup>. Perma-Fix Northwest is the only currently utilized capability for repackaging TRUM waste.

**Table 4-1. Certifiable TRUM Volumes**

Certifiable TRUM Waste Category	Through CY 2016	CY 2017	CY 2018	CY 2019	CY 2020	CY 2021	CY2022 Through 3/30
TRUM Waste Made Certifiable*	2,079	353	363	581	189	122	79
Cumulative TRUM Waste Made Certifiable*	2,079	2,432	2,795	3,376	3,565	3,687	3,766
Certifiable Waste Resulting from Repack	1,490	95	90	155	58	59	9

Note: All values reported in cubic meters (m<sup>3</sup>).

\*TRUM volume before size reduction.

CY = calendar year

TRUM=transuranic mixed

Figures 4-1 and 4-2 show similar aerial views of OSA-A. Figure 4-1 is from December 2021, while Figure 4-2 is from September 2013. The majority of progress toward making the M-091 TRUM waste certifiable has been through processing the waste from the OSA at Perma-Fix Northwest. Comparing the two figures provides a visual representation of this progress.





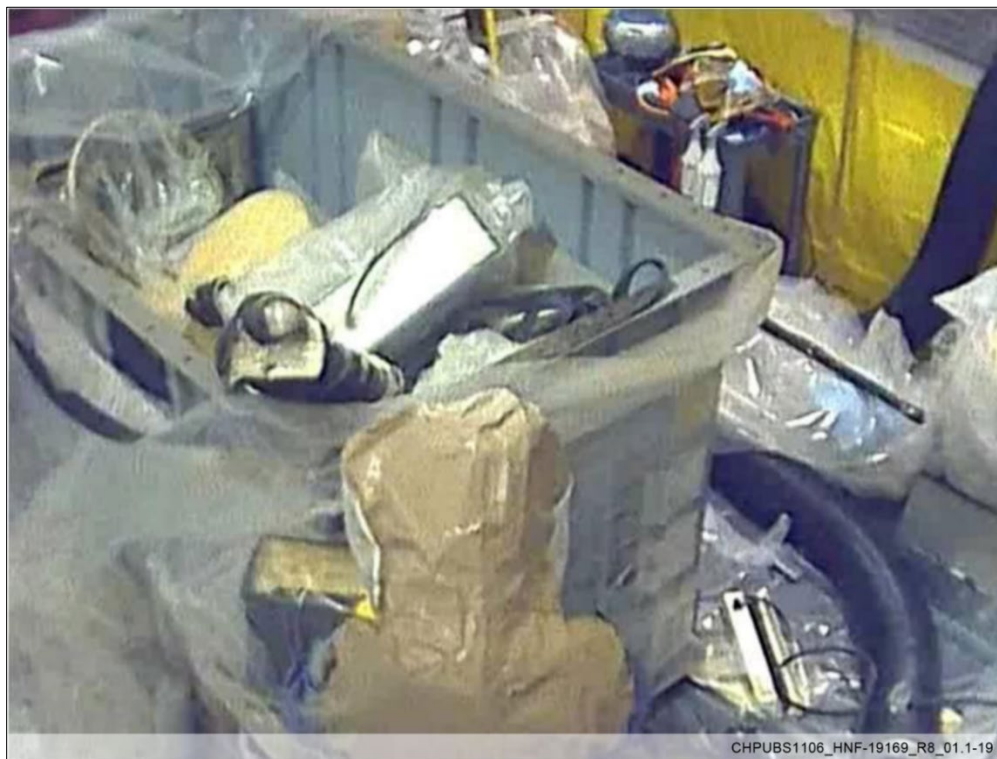
Figure 4-1. OSA-A Aerial View Looking East – December 2021



Figure 4-2. OSA-A Aerial View Looking East – September 2013

#### 4.1.2 Processing Approach to Create Certifiable Containers of TRUM Waste

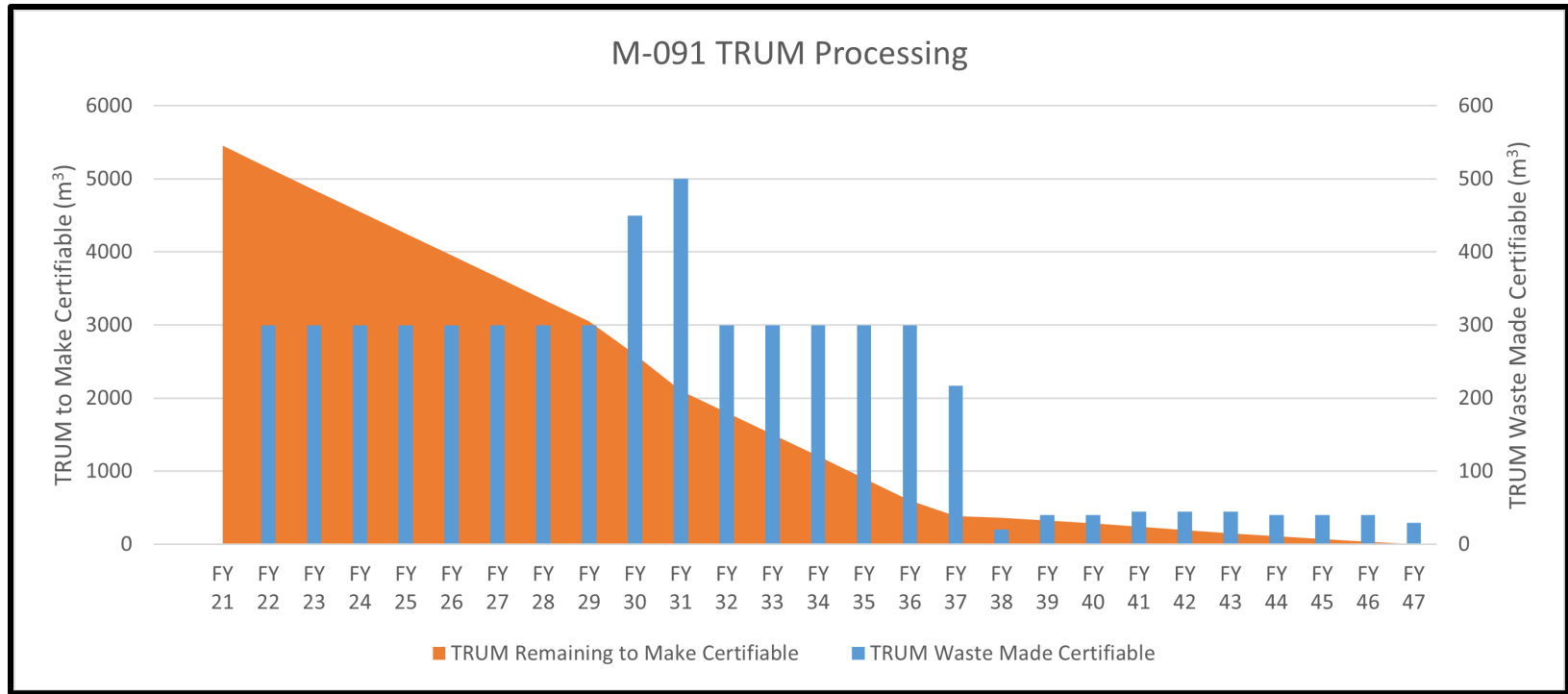
This section addresses containers currently in aboveground storage that are being repackaged into a certifiable form at Perma-Fix Northwest, the only available capability today for repackaging TRUM waste. In addition, this section addresses the containers remaining to be retrieved from the LLBGs (RSW) that do not meet the Perma-Fix Northwest acceptance criteria, which was addressed in the engineering alternatives analysis completed under Milestone M-091-51 (see Chapter 2). Figure 4-3 shows an example of repackaging of TRUM waste at Perma-Fix Northwest.



**Figure 4-3. Repackaging of TRUM Waste at Perma-Fix Northwest**

Retrieved containers must undergo NDA in order to determine if they are TRU/M waste or MLLW. For the drums and boxes of RSW ( $\leq 8$  ft by 4 ft by 4 ft) that have been determined to be TRUM waste, NDE is used to determine whether a WIPP-prohibited item(s) is present prior to shipping containers offsite for repackaging. If a prohibited item(s) is found, the container will be appropriately remediated to yield a WIPP-certifiable container. If a container is to be shipped offsite to be processed into a WIPP-certifiable form, the contents will be characterized onsite before the drum is shipped offsite. In the potential case of a box that cannot undergo NDE, acceptable knowledge (AK) based on review and investigation of the waste record is to be used for characterization. This AK will be documented in the operating record and, in the case of offsite treatment, provided to the facility prior to shipment.

Figure 4-4 presents a summary of the volume of M-091 TRUM waste projected to be repackaged into WIPP-certifiable containers. The bars represent the TRUM waste expected to be processed and become certifiable during a fiscal year, and the line represents the remaining inventory that still requires processing to be made WIPP certifiable. The projected values are based on existing suspect TRUM waste volumes. The waste currently in aboveground storage that is already in a certified or certifiable form is not included in Figure 4-4. Additional information is provided in Appendix D of this PMP.



\*See Appendix D for information on the basis of the volumes reported in this figure.

**Figure 4-4. Certifiable Volume Projections of TRUM Waste (M-091 Scope)**

Under the M-091-47 Milestone series, at least 280 m<sup>3</sup> of TRUM waste has been repackaged using commercial capabilities from FY 2017 through FY 2021. M-091-47-T02 required a Tri-Party Agreement change control form to be submitted to Ecology by September 30, 2022. Table 1-1 identifies the two new milestones, M-091-47-T03 and M-091-47-T04, and their annual target dates for certification of TRUM waste and/or treatment and disposal of MLLW. Volumes of TRUM waste treated or MLLW treated and disposed beyond the 280 m<sup>3</sup> required by the M-091-47 Milestone series are applied to subsequent years' milestone requirements.

To accomplish this M-091 Milestone work scope, DOE will continue to use existing capabilities and acquire the necessary new capabilities discussed in Chapter 2. Current milestones focused on onsite repackaging to handle CH TRUM waste not treated at an offsite commercial facility are M-091-55 and M-091-56. The processing capability design relative to these milestones will be suitable for processing containers that fit within a 4 ft (height) by 4 ft (width) by 8 ft (length) layout, at minimum.

## 4.2 Treatment of MLLW

Substantial progress has been made in recent years in the treatment and disposal of MLLW. Since 1997, over 14,000 m<sup>3</sup> of MLLW has been treated and disposed of. Most of this MLLW has been treated using commercial capabilities and disposed onsite at either the mixed waste trenches (MWTs) or the Environmental Restoration Disposal Facility (ERDF).

Current commercial facilities under contract include the following:

- Perma-Fix Northwest, located in Richland, Washington
- Perma-Fix Diversified Scientific Services, Inc., located in Kingston, Tennessee

### 4.2.1 Status and Annual Volume Projections for Treatment of MLLW

During CY 2021, twenty-eight 55-gal drums and three RSW metal boxes (42.4m<sup>3</sup>) of M-091 MLLW were sent to Perma-Fix Northwest to be processed. To date, 6.1 m<sup>3</sup> have been returned to the Central Plateau for disposal at the mixed waste trench. As of February 2022, a total of 57 CH MLLW containers and 14 RH MLLW containers remained in aboveground storage.

After retrieval and assay, a portion of the RSW will be designated as non-TRU waste based on the change in the definition of TRU waste (to 100 nCi/g from the former definition of 10 nCi/g), which occurred after the waste was placed into retrievable storage in the trenches. RSW that designates as MLLW will be disposed at the MWTs or ERDF. It is anticipated that current capabilities are available to process most of the remaining MLLW. Newly generated MLLW will continue to be treated within the 1-year storage prohibitions specified in 40 CFR 268.50, "Land Disposal Restrictions," "Prohibition on Storage of Restricted Wastes."

### 4.2.2 MLLW Characterization

This section addresses containers currently in storage and those to be retrieved from the LLBGs.

Drums of RSW that have been determined to be MLLW receive NDE to determine whether a nonconforming item(s) is present before being shipped offsite for treatment. If a nonconforming item(s) is found, the information from the NDE will be included in the operating record for the container and sent to the receiving facility before the drum is sent offsite for treatment.

Boxes of RSW that have been determined to be MLLW will undergo NDE, if capability is available, to determine whether a nonconforming item(s) is present. If a nonconforming item(s) is not found, the box will be sent offsite for treatment. If a nonconforming item(s) is found, the box will be shipped offsite for

processing after additional knowledge obtained from the NDE is recorded in the waste package operating record, and the additional knowledge will be sent to the receiving offsite facility prior to shipment.

For boxes of RSW that have been determined to be MLLW where the capability to perform NDE is not available, the waste record of the waste box will be reviewed and investigated to determine the probable contents inventory. This review and investigation will be documented in the operating record. If the box is to be shipped offsite for processing, all available process knowledge about the contents will be presented to Ecology before the package is shipped to the offsite facility.

#### **4.2.3 Treatability Approach to MLLW**

The MLLW is categorized by the necessary treatment path to ensure that the waste, once treated, will meet LDR requirements for disposal. Pursuant to the *Hazardous and Solid Waste Amendments of 1984*, LDRs were promulgated beginning in 1986 for nonradioactive waste. The LDRs later became effective for mixed waste. Beginning in 1990, Tri-Party Agreement Milestone M-26-01 required a plan with subsequent yearly reports on the volume of mixed waste in storage at the Hanford Site. The last report submitted, *2019 Hanford Land Disposal Restrictions (LDR) Full Report* (DOE/RL-2020-09), provides total waste volume for both the currently stored inventory and the waste forecast to be generated during the next 5 years, by treatability group. This PMP does not address MLLW LDR Treatability Groups. For further information on MLLW LDR Treatability Groups see DOE/RL-2020-09.

#### **4.2.4 Treatment Capabilities for MLLW**

Consistent with the LDR report, MLLW will be treated either by a commercial facility or on the Hanford Site via the capability developed to meet M-091-55/56: a repackaging facility to repackage and/or treat MLLW, low-level waste (LLW), and TRU and TRUM waste, as needed. With respect to RH waste, DOE plans to develop a future facility. Figure 1-2 depicts the schedule and applicable milestones for future onsite facilities for treatment of CH MLLW and RH MLLW.

Onsite and offsite transportation of waste is discussed in Section B1.6 in Appendix B.

#### **4.2.4 Disposal of MLLW**

On the Hanford Site, MLLW is disposed at the MWTs and ERDF. The MWTs (LLBG 218-W-5, Trenches 31 and 34) are RCRA compliant, meet Subtitle C disposal requirements, and provide permanent disposal of MLLW. They have a double-liner system with leachate collection. The combined capacity of the two MWTs is approximately 22,300 m<sup>3</sup>. Nearly two-thirds of their combined capacity has been filled with waste.

ERDF is authorized to dispose of waste under CERCLA and meets substantive requirements for RCRA landfills (e.g., double liner and leachate collection). The landfill is used for disposal of environmental restoration waste being generated from cleanup activities. ERDF is designed to provide permanent disposal capacity to accommodate projected Hanford Site LLW and MLLW.

In 2007, an amendment to the ERDF Record of Decision (ROD) (EPA et al., 2007, *Amendment to the Record of Decision for the USDOE Hanford Environmental Restoration Disposal Facility*) was approved, authorizing treatment and disposal at ERDF of specific Hanford Site-only waste that is not covered in other existing Hanford Site CERCLA authorizations or RODs. Examples of Hanford Site-only waste include waste from surveillance and maintenance at Hanford Site facilities, environmental research and development activities, sample analyses, liquid effluent waste treatment, and environmental monitoring programs.

## 5 Certification and Shipment of TRUM Waste

DOE has made considerable progress in removing TRUM waste from the Hanford Site. Over 4,400 m<sup>3</sup> of TRUM waste has been shipped to WIPP for disposal, either directly from the Hanford Site or via the Advanced Mixed Waste Treatment Project (AMWTP) in Idaho Falls, Idaho. This chapter presents the DOE plan to complete final certification and shipment of TRUM waste by continuing to use existing capabilities and, where necessary, acquiring new capabilities to prepare and manage the remaining containers of CH TRUM and RH TRUM wastes for offsite disposal (see Chapter 2).

Equipment previously used on the Hanford Site to certify CH TRUM waste in 55-gal drums and standard waste boxes (SWBs) is being re-evaluated to support future certification efforts. Refurbishment or replacement is necessary to fully restore these capabilities. A Mobile ISOCS™ Large Container Counter (MILCC™) is in the process of being procured to enhance NDA capabilities. A new capability is needed to certify the CH TRUM waste in standard large box 2 (SLB2) containers. The capability to perform the dose-to-curie method is also needed to certify RH TRUM waste in 30-gal and 55-gal drums.

Existing and legacy capabilities are adequate to load CH TRUM waste in 55-gal drums and SWBs into TRUPACT-II casks for shipment to WIPP. Capability for loading CH SLB2 containers into Transuranic Package Transporter Model III (TRUPACT-III) casks will either be transferred to Hanford from another DOE location or replicated at Hanford. RH TRUM container loading capability requirements will be defined and planned for as a part of the RH processing project scope.

Subsequent milestones will address the selection of preferred alternatives for the design and construction of the needed capabilities to certify and ship the remaining TRUM waste to WIPP.

### 5.1 Status and Annual Volume Projections for Certification and Shipment of TRUM Waste

Final certifications of TRUM waste were not performed by the Central Characterization Program (CCP), nor were shipments of TRUM waste made to WIPP, between the start of CY 2021 and June 30, 2022.

### 5.2 Certification and Shipment of TRUM Waste to WIPP

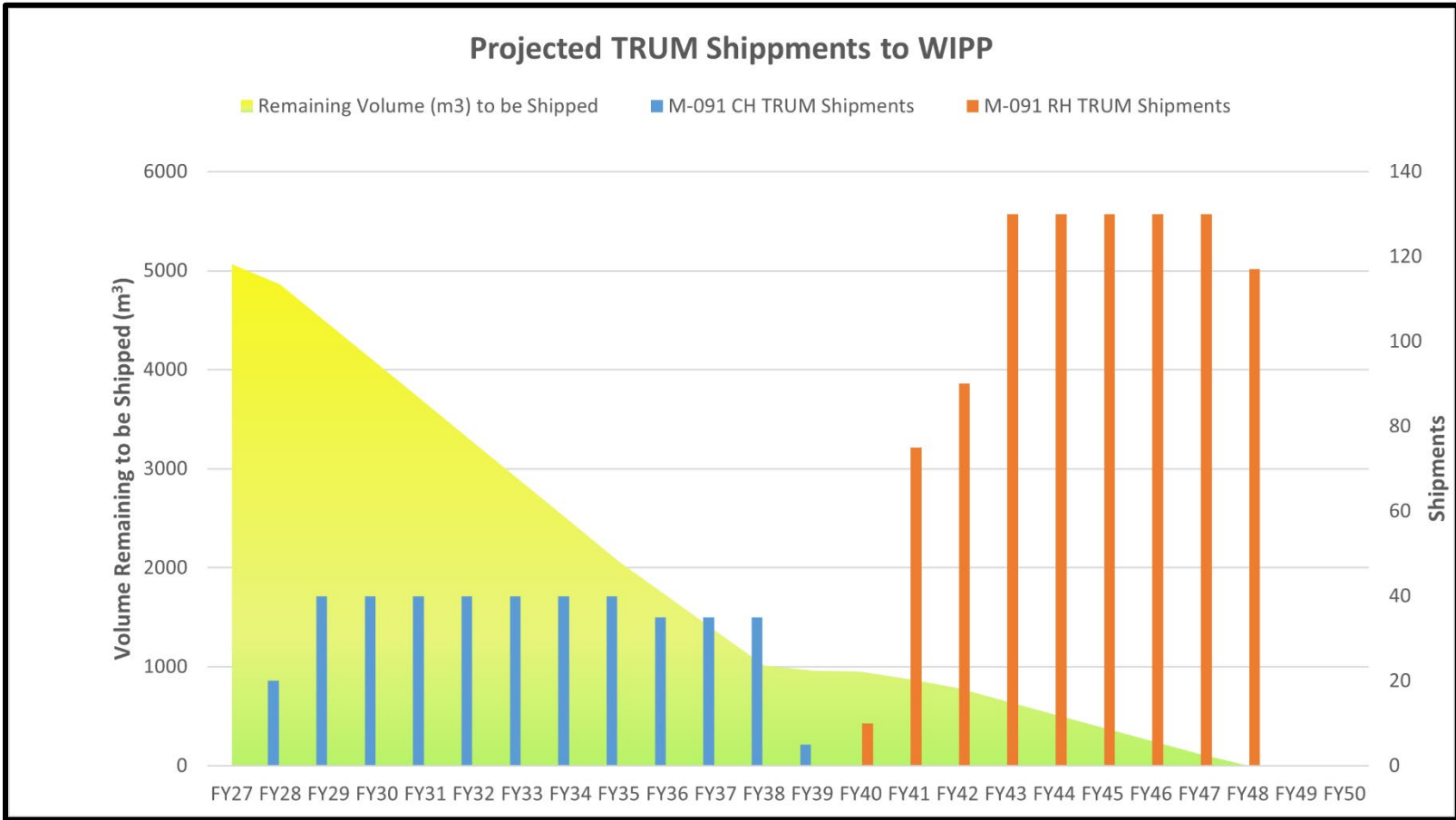
WIPP was reopened to receive TRUM waste on December 23, 2016, after an extended shutdown due to the radiological incident that occurred on February 14, 2014. Shipments of TRU waste to WIPP from other DOE sites recommenced in April 2017.

It is anticipated certification of TRUM waste will continue to be done by CCP, although details for redeployment of certification/shipping capability at the Hanford Site have not been finalized. It is anticipated that the TRUM certification program will resume in FY 2026 with shipments resuming in FY 2028.

Figure 5-1 presents a summary of the volume and number of shipments of M-091 TRUM waste projected to be shipped to WIPP. The bars represent the projected number of CH TRUM and RH TRUM waste shipments to WIPP during a fiscal year, and the line represents the remaining inventory to be shipped to WIPP at the end of a fiscal year. Shipments of TRUM waste to WIPP are expected to be completed by September 30, 2050.

---

™ ISOCS and MILCC are trademarks of Mirion Technologies, Inc. and/or its affiliates in the United States and/or other countries.



Note: See Appendix D for information on the basis of the volumes reported in this figure.

**Figure 5-1. Projection of TRUM Waste Shipments to WIPP**

The following sections describe the certification program allowing shipment of TRUM waste to WIPP for disposal.

### 5.2.1 CCP Certification Program

The DOE Carlsbad Field Office (CBFO) is responsible for characterization, certification, and shipment of TRU/M waste to WIPP for disposal through CCP. These activities at the Hanford Site will be established through milestone agreements.

To support DOE in the packaging and disposal of TRU/M wastes, CCP provides characterization services in accordance with NM4890139088-TSDF, *Waste Isolation Pilot Plant Hazardous Waste Permit* (Attachment C, "Waste Analysis Plan"), and DOE/WIPP-02-3122, *Transuranic Waste Acceptance Criteria for the Waste Isolation Pilot Plant*.

The waste acceptance criteria applicable to the treatment, storage, and disposal (TSD) of CH TRU/M and RH TRU/M waste at WIPP are defined in DOE/WIPP-02-3122. These criteria serve as DOE instructions for ensuring that CH TRU/M and RH TRU/M waste are managed and disposed in a manner that protects human health and safety and the environment.

### 5.2.2 CH TRUM Waste Shipments to WIPP

DOE has previously used the WRAP Facility to load drums and SWBs of CH TRUM waste into TRUPACT-II containers for shipment to WIPP. An assessment is needed to determine necessary investments to restore the equipment to a functional state. Each stainless-steel TRUPACT-II (Figure 5-2) is approximately 2.4 m (8 ft) in diameter, 3 m (10 ft) high, and constructed with leak-tight inner and outer containment vessels. TRUPACT-II can hold up to fourteen 55-gal waste drums or two SWBs. The TRUPACT-II containers are typically shipped three at a time to WIPP (Figure 5-3).



Figure 5-2. Loading a TRUPACT-II with TRUM Waste Drums at WRAP





Figure 5-3. TRUPACT-II Shipment of TRUM Waste to WIPP

### 5.2.3 RH TRUM Waste Shipments to WIPP

DOE currently does not have the onsite capability necessary to load and ship the RH TRUM waste to WIPP (see Chapter 2). Alternatives to provide the needed capabilities to ship RH TRUM waste were identified in CHPRC-02916 and are further evaluated in CHPRC-03264, which recommends alterations be made to the WRAP shipping facility to accommodate HalfPACT loading and shipment. A HalfPACT is similar to a TRUPACT-II, except for being 76.2 cm (30 in.) shorter, and is suitable for accommodating heavy loads. Specially designed shielded containers, approximately the same size as a 55-gal drum, are utilized to ship RH waste in HalfPACT casks. Each HalfPACT can accommodate three shielded containers, and a shipment can accommodate three HalfPACT casks, for a total of nine shielded containers.

Another approved method for shipping RH TRUM, detailed in CHPRC-03264, is use of RH 72B casks. This method has not been utilized at the Hanford Site and would require modifications to an existing facility, a new facility, or utilization of a mobile loading configuration. The RH 72B cask was not selected as the preferred RH TRUM shipping method in CHPRC-03264; however, it remains a potential option for consideration as planning continues.

## 6 Storage Capacity

CWC, T Plant, and WRAP provide storage for containers managed under the M-091 Milestone series. Table 6-1 lists the storage capacities as stated in DOE/RL-2015-74, *Hanford Facility Dangerous Waste Part B Permit Application; Low-Level Burial Grounds Trenches 31-34-94, T Plant Complex, and Central Waste Complex-Waste Receiving and Processing Facility*. The maximum volume of waste that would require storage at one time is projected to be 14,000 m<sup>3</sup> with potentially an additional 6,800 m<sup>3</sup> from CERCLA cleanup activities (Chapter 7). With a storage capacity of 33,225 m<sup>3</sup>, the need for additional storage capacity is not expected. As the out-year schedule for the management of waste containers is refined, the impact on storage capacity will be reevaluated.

**Table 6-1. Facility Storage Capacity**

Facility	Capacity (m <sup>3</sup> )*
CWC/WRAP	24,949
T Plant	8,276
<b>Total</b>	<b>33,225</b>

Source: DOE/RL-2015-74, *Hanford Facility Dangerous Waste Part B Permit Application; Low-Level Burial Grounds Trenches 31-34-94, T Plant Complex, and Central Waste Complex-Waste Receiving and Processing Facility*.

\*The storage capacity is based on the latest Hanford Facility Dangerous Waste Part B Permit Application. It is recognized that final storage capacities will be determined during the application review/approval process.

CWC = Central Waste Complex

WRAP = Waste Receiving and Processing Facility

The following assumptions were used to determine the adequacy of the current storage capacity:

- TRUM waste will remain in aboveground storage until the waste is treated/processed and shipped to WIPP.
- After retrieval, TRUM waste will be designated and stored while awaiting treatment/processing.
- After treatment/processing, TRUM waste will be stored while awaiting final certification and shipment to WIPP.

### 6.1 CWC/WRAP Storage

CWC, located in the 200 West Area, provides storage for mixed waste. The following waste management activities are associated with storage:

- Loading and unloading of containers for shipments
- Transferring containers from one building or storage area to another area
- Relocating a container from storage for treatment
- Performing required facility, equipment, and container inspections and maintenance

The CWC storage areas provide space for various sized waste containers. Storage structures include physical features that provide segregated storage areas that can be used when needed to maintain

appropriate separation between containers of incompatible waste (incompatibility is defined in WAC 173-303-040, “Dangerous Waste Regulations,” “Definitions”). Secondary containment has been incorporated into the design of the Flammable and Alkali Waste Storage Modules, the 2404WA Building, and the 2402/2403-series buildings.

The main WRAP building (2336W) is divided into administrative, shipping and receiving, waste characterization, and processing areas. Storage of mixed waste occurs in several areas as follows:

- Shipping and receiving area
- Characterization area
- Room 152 of the administrative area
- Process area

Two large container storage buildings are part of WRAP (2404WB and 2404WC) and include secondary containment. The container storage areas at WRAP also include outdoor storage that is intended to facilitate the WRAP waste management activities such as the loading and unloading of containers for shipment, transferring containers from one building to another area or TSD unit, or relocating a container for storage awaiting treatment or characterization.

The WRAP storage/treatment areas provide space for the management and storage of various sized waste containers. Storage structures and areas are operated to maintain appropriate separation between containers of incompatible waste (incompatibility is defined in WAC 173-303-040).

## **6.2 T Plant Storage**

T Plant storage structures and areas use a variety of engineered and administrative controls to provide and maintain the appropriate segregation/separation of incompatible wastes. Storage of dangerous and/or mixed waste in various sized containers could take place in the 221T Canyon, 221T Railroad Tunnel, 2706T, 214T Storage Building, or other authorized Dangerous Waste Management Units located within the T Plant Operating Unit Group.

## 7 TRU and TRUM Waste Generated from CERCLA Cleanup Actions

A goal of the Tri-Parties is to integrate the Hanford Site cleanup activities to the extent possible to enable efficient, effective management of waste. The Tri-Parties have agreed to integrate the plan for managing TRU and TRUM waste under the CERCLA cleanup actions, with the plan to manage similar waste forms under the M-091 Milestone work scope. As a result, this M-091 PMP addresses the acquisition of capabilities necessary to prepare TRU and TRUM waste within the scope of the M-016 Milestone series for disposal at WIPP. This PMP reflects retrieval decisions, projected waste volumes, and schedules for CERCLA cleanup actions authorized in RODs and action memoranda at the Hanford Site. The remedial actions for all non-tank farm and noncanyon OUs are to be completed by September 30, 2042, per Milestone M-016-00.

Currently, it is expected that other TRU and TRUM waste generated during Hanford Site cleanup activities (e.g., 618-11 and 100-K Basins) will be compliantly packaged at the point of generation. If, at the time of conceptual design, this is not the case (e.g., K Basin sludge), the scope of the new capability or the time to use the new capability may be expanded to accommodate the repackaging of other TRU or TRUM waste beyond M-091 scope. Similarly, conceptual design of the alpha caisson processing capability will explore treatment of noncaisson RH TRUM waste and incorporate the necessary accommodations if this is deemed appropriate.

Schedules for CERCLA cleanup actions are established through the following CERCLA decision documentation:

1. **Prepare Remedial Investigation and Feasibility Study (RI/FS).** The remedial investigation presents data collected during the investigation and other characterization activities (analogous to the RCRA facility investigation). The feasibility study develops and evaluates alternatives for remediation comparable to the RCRA corrective measures study.
2. **Prepare Proposed Plan.** This plan is based on the detailed information contained in the RI/FS reports.
3. **Receive Public Input.** The Tri-Parties will solicit input from the Tribal Nations and the public regarding the preferred remedial alternatives, which are described in the proposed plan.
4. **Select Preferred Alternative.** Comments received from the Tribal Nations and the public regarding the preferred alternatives will assist the Tri-Parties in selecting a final decision on the preferred alternatives that will be taken to clean up the contamination associated with the OUs described in the proposed plan.
5. **Prepare ROD.** After the Tri-Parties consider the comments received, a ROD will be issued identifying the final cleanup remedies selected for implementation, including a summary of the responses to comments.
6. **Post-ROD Activities.** The selected remedial alternative is implemented after the final ROD is approved. This stage may involve remedial design and design verification studies, construction, remediation process optimization, and operation and maintenance of the implemented processes (comparable to the RCRA corrective measure implementation stage).

The OUs and facilities that may generate TRU waste are at different stages in the CERCLA decision process.

Table 7-1 summarizes the OUs and facilities that will or will not be addressed in this PMP. Those to be included have the potential to generate waste with TRU constituents greater than 100 nCi/g during CERCLA cleanup actions and are within the scope of the M-016, M-083, and M-085 Milestone series. The groundwater OUs and the tank farm WMAs are not addressed in this PMP.

**Table 7-1. Summary of OUs and Facilities**

OU or Facility	Comment
300-FF-2, PFP, 221-U Facility, 100-K Basins, 300-FF-2, 200-PW-1, and 200-PW-6, 224B, and 224T	<ul style="list-style-type: none"> <li>• Potential waste with TRU constituents greater than 100 nCi/g is generated during cleanup/closure actions at these OUs and facilities.</li> <li>• Approved CERCLA cleanup actions under RODs or action memoranda.</li> <li>• Addressed in this PMP (Sections 7.1 and 7.2).</li> </ul>
200-BC-1, 200-SW-2, 200-WA-1, 200-DV-1, 200-IS-1, 200-EA-1, 200-CP-1, and 200-CR-1	<ul style="list-style-type: none"> <li>• Potential waste with TRU constituents greater than 100 nCi/g is generated during cleanup/closure actions at these OUs and facilities.</li> <li>• Future CERCLA cleanup actions.</li> <li>• Only summary presented in this PMP (Sections 7.3 and 7.4, and Appendix E).</li> </ul>
100-DR-1, 100-DR-2, 100-FR-1, 100-FR-2, 100-NR-1, 100-IU-2, 100-IU-6, 100-KR-1, 100-KR-2, 100-HR-1, 100-HR-2, 200-CW-1, 200-CW-3, 200-CW-5, 200-PW-3, 200-CB-1, and 209E (Remaining)	<ul style="list-style-type: none"> <li>• No waste with TRU constituents greater than 100 nCi/g is expected to be generated during CERCLA cleanup actions at these OUs.</li> <li>• Not addressed in this PMP.</li> </ul>
200-BP-5, 200-PO-1, 100-NR-2, 100-FR-3, 100-KR-4, 100-HR-3, 100-FF-5, 200-UP-1, and 200-ZP-1	<ul style="list-style-type: none"> <li>• No waste with TRU constituents greater than 100 nCi/g is expected to be generated during CERCLA cleanup actions at these groundwater OUs.</li> <li>• Not addressed in this PMP.</li> </ul>
WMA Series	<ul style="list-style-type: none"> <li>• Tank farm WMAs are covered under the M-045 Milestone series.</li> <li>• Not addressed in this PMP.</li> </ul>

CERCLA = *Comprehensive Environmental Response, Compensation, and Liability Act of 1980*

OU = operable unit

PFP = Plutonium Finishing Plant

PMP = project management plan

ROD = record of decision

TRU = transuranic

WMA = waste management area

## 7.1 Status of Approved CERCLA Cleanup Actions Generating TRU and TRUM Waste

DOE is currently implementing several major CERCLA cleanup actions on the Hanford Site in accordance with approved RODs and action memoranda that have or are projected to generate TRU or TRUM waste. Table 7-2 presents the forecast volumes of these cleanup actions and represents a forecast subject to time changes. The following sections discuss these cleanup actions.

**Table 7-2. TRU and TRUM Waste Forecast from CERCLA Cleanup Actions**

Generator	Forecast Total TRU/M Waste	
	CH (m <sup>3</sup> )	RH (m <sup>3</sup> )
100-K*	0	51
618-11*	20	80
200-PW-1, 200-PW-6 OUs*	6,625	0
224B, 224T	To be determined	

\*Projected volumes (m<sup>3</sup>) are from the Solid Waste Information and Tracking System.

CH = contact-handled

OU = operable unit

RH = remote-handled

TRU/M = transuranic and/or transuranic mixed

### 7.1.1 100-K Basin

According to the 100-K ROD Amendment (EPA, 2005, *U.S. Department of Energy 100 K Area K Basins Hanford Site – 100 Area Benton County, Washington Amended Record of Decision, Decision Summary and Responsiveness Summary*), the sludge will be treated, packaged for disposal, interim stored pending shipment, and shipped to a national repository for disposal. Sludge from the 105KW Basin originated primarily from the 105KE Basin floor and pits, fuel canisters, and fuel washing. At the time of writing this document, milestone M-016-173 “Select K Basin Sludge Treatment and Packaging Technology and Propose New Interim Sludge Treatment and Packing Milestones”, is in progress and due 9/30/2022. At its conclusion it will present a TPA Change Control Form, which will develop new interim milestones to address the timing and schedule for future capabilities. K Basin remediation is being performed in accordance with the 100-K ROD Amendment (EPA, 2005).

During K Basin cleanup, an estimated 10 m<sup>3</sup> filter media (sand and garnet) with TRU constituents greater than 100 nCi/g may also be generated.

### 7.1.2 U Plant

TRUM waste generated during the CERCLA cleanup actions at U Plant is a tank heel. During FY 2011, DOE removed Tank D-10, located in Cell 30 of the 221U Facility, from the canyon and transferred it to CWC for interim storage until capability is available to repackage the waste in a WIPP-certifiable container, as described in DOE/RL-2010-106, *90% Design Remedial Design Report Addendum for the Disposition of Tank D-10 from Cell 30 within the 221-U Plant Canyon Facility*. The waste package contains approximately 1,893 L (500 gal) of waste that has been designated as RH TRUM waste. U Plant decontamination and decommissioning is being performed in accordance with EPA et al., 2005, *Record of Decision 221-U Facility (Canyon Disposition Initiative) Hanford Site, Washington*.

DOE will disposition the waste package with the future large-package/RH capability. There is a possibility that the waste package could be dispositioned at the same future facility used to disposition the K Basin sludge; however, design of this treatment and packaging system is not mature enough to

determine whether the solidification and packaging system could be used for packaging of other RH TRUM sludge.

### 7.1.3 618-11 Burial Ground (300-FF-2)

The 618-11 Burial Ground is a challenging CERCLA cleanup action that is part of the 300-FF-2 OU at the Hanford Site. Incomplete operational records and history associated with past waste disposal practices of the 300 Area waste streams complicate these actions. The burial grounds contain waste that the 300 Area of the Hanford Site generated while developing and manufacturing reactor fuel and conducting laboratory research during the Hanford Site's plutonium production mission.

The 618-11 Burial Ground is located about 7 miles from the 300 Area and adjacent to the Energy Northwest Columbia Generating Station, the commercial nuclear power plant located on the Hanford Site. The 618-11 Burial Ground contains vertical pipe units (VPUs), consisting of approximately 4.6 m (15 ft) long pipes up to 0.6 m (22 in.) diameter with open ends. Highly radioactive containers of waste were disposed in many of these VPUs and covered with fill material. The 618-11 Burial Ground also includes caissons that were used for similar disposal but differ in construction. The caissons are approximately 3 m (10 ft) long pipes up to 2.4 m (8 ft) in diameter installed vertically in the subsurface with open bottoms. An angled chute extended from each caisson toward the surface for disposal access. Waste forms within some of these VPUs and caissons may be considered principal threat waste. DOE is performing the 618-11 Burial Ground remediation in accordance with EPA/ROD/R10-01/119, *EPA Superfund Record of Decision: Hanford 300-Area (USDOE), Benton County, Washington*; and DOE/RL-2014-13-ADD1, *Remedial Design Report/Remedial Action Work Plan for 300-FF-2 Soils*.

Characterization of the burial ground began in the spring of 2011. The remedial actions for the 618-11 Burial Ground were initially proposed to be completed by September 30, 2021, under Tri-Party Agreement M-016-86; however, these actions have been re-established by interim Milestone M-016-89 and are projected to be completed by September 30, 2028.

### 7.1.4 200-CW-5, 200-PW-1, 200-PW-3, and 200-PW-6 OUs

The ROD for the 200-CW-5, 200-PW-1, 200-PW-3, and 200-PW-6 OUs (EPA et al., 2011, *Record of Decision Hanford 200 Area Superfund Site 200-CW-5 and 200-PW-1, 200-PW-3, and 200-PW-6 Operable Units*) was signed by the Tri-Parties in October 2011. The selected remedy of these OUs addresses soils and subsurface disposal structures, two settling tanks, and associated pipelines contaminated primarily with plutonium and cesium.

From 1943 to 1990, the primary mission of the Hanford Site was the production of nuclear materials for national defense. Operations at the Hanford Site included nuclear fuel manufacturing, reactor operations, fuel reprocessing, chemical separation, plutonium and uranium recovery, processing of fission products, and waste partitioning. Large volumes of liquid wastes were generated from the processing of plutonium at various facilities in the 200 East and 200 West Areas. This process wastewater was discharged to waste sites in the 200-PW-1, 200-PW-3, and 200-PW-6 OUs. The processes were intended to recover as much plutonium as possible prior to discharge of the waste liquids, but the waste streams still contained low levels of plutonium and other contaminants. Cooling water and steam condensate were discharged to the 200-CW-5 OU waste sites. The cooling waste and steam condensate systems were designed to isolate those systems from potential contamination sources but, occasionally, became contaminated because of minor leaks due to corrosion pinholes or cracks and process upsets. The liquid waste that contained low levels of plutonium and other contaminants discharged to the waste sites in these OUs infiltrated the ground and contaminated the underlying soil. Over time, this facilitated the accumulation of contaminants to form localized areas of concentrated contaminants.

Removal, treatment (as needed), and disposal (RTD) of soil and debris to the specified depths or specified cleanup levels will be used to address plutonium-contaminated soils and subsurface structures and debris. This consists of removing a portion of the contaminated soil, structures, and debris; treating these removed wastes as required to meet disposal requirements at ERDF or waste acceptance criteria for offsite disposal at WIPP, and disposal at ERDF or WIPP. The selected pipelines associated with these OUs will also be excavated and disposed at ERDF. Cleanup levels have been selected that are protective of groundwater and the current and reasonably expected future industrial land use.

- Three 200-PW-1 OU waste sites (216-Z-1A, 216-Z-9, and 216-Z-18), also known as the High-Salt Waste Group, will use the RTD approach to excavate contaminated soils and debris located to a minimum of 0.6 m (2 ft) below the bottom of the disposal structure, with disposal at ERDF or WIPP, as appropriate. After the excavations are filled, an evapotranspiration barrier will be constructed over the remaining waste in these waste sites. The 216-Z-9 stabilization was completed in FY 2021.
- The 200-PW-6 OU and four 200-PW-1 OU waste sites (216-Z-5, 216-Z-1&2, 216-Z-3, and 216-Z-12), also known as the Low-Salt Waste Group, will use the RTD approach to excavate contaminated soils and debris to a depth of 6.7 to 10 m (22 to 33 ft) below ground surface, with disposal at ERDF or WIPP, as appropriate. After excavations are filled, an evapotranspiration barrier will be constructed over the remaining waste in these waste sites. The 216-Z-2 waste site was reevaluated in FY 2021 and it was determined that no further action is required at this time.

Conceptually, the RTD approach consists of the following steps: remove and stockpile clean overburden for use in backfilling; remove contaminated soils and debris using conventional excavation technology, and place in waste containers; dispose waste at ERDF or WIPP; backfill excavation with clean fill and compact; and construct an evapotranspiration barrier as necessary, and replant surface with native vegetation. Stabilization may be required prior to removal.

The 241-Z-361 Settling Tank is an underground, reinforced-concrete structure with a 0.95 cm (3/8 in.) steel liner. The tank has inside dimensions of 7.9 m (26 ft) long and 4 m (13 ft) wide. The bottom slopes, resulting in an internal height variation between 5.2 and 5.5 m (17 and 18 ft). The top of the tank is 0.6 m (2 ft) belowgrade. The tank served as the primary solids settling tank for low-salt liquid from the Plutonium Finishing Plant (PFP) from 1949 to 1973, and then was taken out of service in May 1973, when discharge of contaminated waste streams to the ground from PFP was discontinued as a matter of policy. All available information indicates that the settling tank has not leaked. The 241-Z-361 Settling Tank was stabilized in FY 2021.

The 241-Z-8 Settling Tank is a cylindrical tank that is 12.1 m (40 ft) long and 2.4 m (8 ft) in diameter. It is constructed of steel or wrought iron plate and oriented horizontally at about 1.8 m (6 ft) belowgrade. The tank was in service from 1955 to 1962, receiving pH neutral effluent waste from back flushes of the PFP feed filters.

The sludge removal and tank stabilization of the two settling tanks require the following:

- Removal of sludge from the tanks to the extent necessary to facilitate removal of the tanks.
- Packaging of the sludge to meet waste disposal criteria for disposal at WIPP.
- Screening of waste in container to confirm it meets the requirements for disposal at WIPP. Waste in containers that do not meet WIPP disposal criteria will be treated if necessary and sent to ERDF for disposal.



It is expected that the tanks will be removed, and the excavation areas will be sampled in accordance with the SAP, backfilled, and revegetated. The sludge and tank debris are expected to be TRU waste.

Associated pipelines covered under the 200-PW-1 and 200-PW-6 OUs are expected to be TRUM and will be shipped to WIPP for disposal. The pipelines are constructed of various materials, primarily stainless steel or vitrified clay.

An estimated 6,625 m<sup>3</sup> of TRU/M soil/rock/gravel waste is anticipated to be generated during the RTD of these OUs, of which an estimated 140 m<sup>3</sup> of TRU/M sludge is anticipated to be generated from the two settling tanks. It is expected that any TRU/M waste generated during the remediation of the 200-PW-1 and 200-PW-6 OUs will be packaged in WIPP-certifiable containers at the point of generation, and no new capabilities will be required.

### **7.1.5 224B Plutonium Concentration Facility**

The 224B Building, located in the 200 East Area of the Hanford Site, was used to purify and concentrate diluted plutonium nitrate solution that was the product of the 221B Building bismuth-phosphate process. The building consists of a single canyon-type building, constructed of reinforced concrete and concrete block. There are six hot cell areas within the 224B Building. Most of the radioactive inventory exists within the process cell equipment and piping.

The 224B Building is designated as a Tier 1 Facility. Final demolition of the 224B Building will be in accordance with DOE/RL-2004-36, *Action Memorandum for the Non-Time Critical Removal Action for the 224-B Plutonium Concentration Facility*. Under Tri-Party Agreement Milestone M-085-72, DOE submitted a RAWP to implement the approved action memorandum for 224B (DOE/RL-2004-36) on September 19, 2020.

### **7.1.6 224T Plutonium Concentration Facility**

The 224T Facility, located adjacent to the T Plant Complex in the 200 West Area of the Hanford Site, was used to purify and concentrate diluted plutonium nitrate solution that was the product of the 221B Building bismuth-phosphate process. In addition, a portion of the facility was later used as a RCRA TSD container storage unit known as the 224T Transuranic Waste Storage and Assay Facility. The building consists of a single canyon-type building, constructed of reinforced concrete and concrete block. There are six hot cell areas. Most of the radioactive inventory exists within the process cell equipment and piping.

The 224T Building is designated as a Tier 1 Facility. Final demolition of the 224T Building will be in accordance with DOE/RL-2004-68, *Action Memorandum for the Non-Time-Critical Removal Action for the 224-T Plutonium Concentration Facility*. Under Tri-Party Agreement Milestone M-085-100, DOE submitted a RAWP to implement the approved action memorandum for 224T (DOE/RL-2004-68) on August 12, 2020.

## **7.2 CERCLA TRU and TRUM Shipments to WIPP**

WIPP was reopened to receive TRUM waste on December 23, 2016, after an extended shutdown due to the radiological incident that occurred on February 14, 2014. Shipments of TRU waste to WIPP recommenced in April 2017. Hanford Site shipments are scheduled to resume by September 30, 2028, according to Milestone M-091-60. When Hanford Site shipments to WIPP resume, M-091 will be prioritized ahead of the CERCLA TRUM waste, with the CERCLA TRUM waste supplementing M-091 where needed to maintain the scheduled shipment rate. Shipping operations will continue with CERCLA TRUM shipments after the M-091 shipments are complete.

### 7.3 Status of Future CERCLA Cleanup Decisions with the Potential to Generate TRU and TRUM Waste

Table E-1 in Appendix E describes the OUs and facilities with the potential to generate waste with TRU constituents greater than 100 nCi/g during CERCLA cleanup actions. To date, no regulatory cleanup decisions have been made for these OUs. A range of plausible alternatives and reasonable upper-bound cleanup volumes have been estimated. Completion schedules will be established with the CERCLA remedial action work plans. Table E-1 in this document gives the waste unit name, waste type, estimated volume, and schedule. The volume projections are based on currently available information and will be updated as the CERCLA process for a given OU progresses. The sources of the estimated volumes are referenced in the table.

Although a significant volume of material with TRU constituents greater than 100 nCi/g has been identified, most the CERCLA decisions have not been made regarding cleanup. This results in a significant level of uncertainty regarding the remedy selection and potential volumes and time of TRU/M waste generation.

### 7.4 Summary of Disposition Approaches per Waste Form

The form of waste with the potential for TRU constituents greater than 100 nCi/g generated during CERCLA cleanup actions fall into three general categories: soil/gravel/rock, debris, and sludge. The following sections outline the waste disposition approach of each of these categories.

#### 7.4.1 Soil, Gravel, and Rock

During the future CERCLA cleanup actions of contaminated cribs, trenches, and tile fields, an upper-bound estimate of 4,170 m<sup>3</sup> of soil/gravel/rock waste could be generated that has a potential to have TRU constituents greater than 100 nCi/g. This estimated volume is based on current available data and is dependent on the area and depth of soil excavated in accordance with the CERCLA RODs. It is expected that this waste would be packaged in WIPP-certifiable containers at the point of generation.

Cleanup actions could include removal and stockpiling of clean overburden for use in backfilling once the contaminated area has been removed; removal of contaminated soil/gravel/rock using conventional excavation technology and placement into WIPP-certifiable containers (SWB or drums); and assay of containers to determine whether they are TRUM waste or LLW/MLLW. The TRUM waste containers will be certified by CCP and shipped to WIPP, and the LLW/MLLW containers will be shipped to ERDF. Specific cleanup actions are as follows:

1. Remove and stockpile clean overburden for use in backfilling.
2. Remove contaminated solids and debris, and place in waste containers.
3. Haul waste containers to assay/screening station and then to ERDF or WIPP for disposal.
4. Backfill excavation with clean fill, and compact.
5. Construct evapotranspiration barrier as necessary, and replant surface with native vegetation.

#### 7.4.2 Debris

During the CERCLA cleanup actions of facilities and burial grounds, an upper-bound estimate of 37,000 m<sup>3</sup> of contaminated debris waste could be generated that has the potential to have TRU constituents greater than 100 nCi/g. Most debris waste generated during the cleanup actions at facilities would be packaged into WIPP-certifiable containers at the point of generation.

There may be occasions that waste cannot be repackaged into WIPP-certifiable containers. Waste in this category could include a portion of the 36,417 m<sup>3</sup> of debris waste potentially removed from the 200-SW-2 Landfills. It is anticipated that this will be dispositioned at an offsite treatment facility or possible future capabilities acquired under M-091.

### **7.4.3 Sludge**

During the CERCLA cleanup actions of facilities, an estimated 280 m<sup>3</sup> of sludge waste could be generated that has a potential to have TRU constituents greater than 100 nCi/g. Typically, sludge removal from tanks would employ a power fluidics system to loosen and homogenize the sludge and transfer to WIPP-certifiable drums or SWBs at the point of generation. Material (e.g., cement or absorbents) would be added to the SWB to absorb residual liquid and stabilize the sludge. These waste containers would be certified by CCP and shipped to WIPP.

## 8 Project Control Elements

The sections in this chapter identify DOE project control elements for the planning, managing, and performance reporting necessary to complete the M-091 Milestone work scope. These project control elements are consistent with DOE O 413.3B, *Program and Project Management for the Acquisition of Capital Assets*, and related project management activities.

### 8.1 Funding Profile and Project Work Breakdown Structure

The funding profile to support activities necessary to complete the M-091 Milestone series is given in Figure 8-1. This funding profile is based on the DOE/RL-2021-47, *2022 Hanford Lifecycle Scope, Schedule and Cost Report*, under M-036-01, which reflects all those actions necessary for DOE to meet all applicable environmental obligations including those under the Tri-Party Agreement (Ecology et al., 1989a). The funding profile does not include the funding necessary to support the totality of CERCLA cleanup actions discussed in Chapter 7.

Work that is part of this PMP is divided into discrete, defined units of scope. DOE uses this breakdown for planning, estimating, and scheduling the performance of work. This breakdown, known as the work breakdown structure (WBS), is developed to organize, define, and display work required to complete a project. The specific WBS element numbers are described in the following paragraphs.

**WBS 013.01 Project Management** – This scope includes overall project management, safety, health, and quality technical support, and oversight to support implementation of key programs such as the Integrated Safety Management System, Corrective Action Management, Occurrence Reporting, and Quality Assurance Program. In addition, this WBS provides support staff for the overall project including waste support services to Hanford Site generators, human relations, buyer/procurement staff, and project controls (e.g., schedulers/cost analysts). Technical support includes environmental and nuclear/criticality safety engineering to oversee development and implementation of regulatory permits, safety bases, procedure reviews, hazard analysis generation, and criticality safety evaluation report development.

Strategic planning and integration is another critical scope element that provides onsite interface between DOE contractors and subcontractors to ensure that mission needs are met. Also included in this scope is the maintenance of the transportation and packaging program, in accordance with applicable requirements for onsite and offsite shipments of regulated waste and materials and nonregulated materials.

**WBS 013.04 MLLW Trenches** – This scope provides activities for the safe and compliant operation of the MWTs and maintaining the MWTs in a ready-to-serve condition.

**WBS 013.05 TRU Waste Retrieval** – This scope provides for retrieval of suspect TRUM waste from the LLBGs (218-W-3A, 218-W-4C [retrieved], 218-W-4B, and 218-E-12B) under Milestone M-091-49. Included is retrieval activity to be completed according to the IRA for M-091-54, and new capabilities necessary for the retrieval of the remaining RSW including the caisson RH RSW. Figure 8-1 shows no funding through FY 2027. DOE will allocate funding as needed in FY 2025-2027 to complete documentation required in support of M-091-54. Retrieval consists of the following activities:

- Removing soil over RSW containers within the trenches
- Removing the RSW containers from the trenches
- Assaying containers and venting containers as required
- Designating waste
- Shipping containers to the appropriate TSD facility
- Sampling of the LLBG trench substrate

Fiscal Year	2022	2023	2024	2025	2026	2027	2028	2029	2030	2031		
013.01 - Project Management	19,700	20,000	20,600	21,200	21,600	22,100	21,900	22,300	22,800	23,400		
013.04 - MLLW Trenches	1,900	2,000	2,300	2,100	2,100	2,400	2,400	2,500	2,500	1,600		
013.05 - TRU Waste Retrieval	0	0	0	0	0	0	2,100	14,800	21,500	37,600		
013.06 - TRU Repackaging	28,000	30,100	30,900	38,100	39,000	5,700	317,500	80,000	71,200	33,600		
013.07 - WRAP	15,300	15,500	5,200	5,300	5,500	5,600	5,700	5,800	10,700	19,800		
013.08 - T Plant	14,500	13,100	13,400	13,700	14,000	14,300	14,600	14,900	15,200	15,700		
013.09 - Central Waste Complex (CWC)	17,300	17,400	18,100	10,200	12,000	11,600	12,200	12,900	13,500	10,800		
013.10 - ERDF	31,100	31,600	43,500	44,300	45,600	46,400	35,300	36,100	37,000	37,900		
013.12 - Integrated Disposal Facility (IDF)	40,200	24,600	27,600	28,100	28,900	29,500	30,000	30,800	31,500	32,200		
013.15 - TRU Disposition	0	0	4,600	5,900	16,500	8,600	9,000	9,200	9,400	9,600		
013.20 - Low-Level Waste Burial Grounds	1,100	1,100	1,100	1,100	1,200	1,200	1,200	1,200	1,300	1,300		
Cost and/or Schedule Uncertainty	4,028	2,129	5,671	6,528	8,031	9,857	7,049	12,101	1,703	14,467		
<b>Level 2 Total</b>	<b>173,128</b>	<b>157,529</b>	<b>172,971</b>	<b>176,528</b>	<b>194,431</b>	<b>157,257</b>	<b>458,949</b>	<b>242,601</b>	<b>238,303</b>	<b>237,967</b>		
Fiscal Year	2032	2033	2034	2035	2036	2037	2038	2039	2040	2041		
013.01 - Project Management	23,900	24,300	25,100	25,800	26,600	27,200	27,800	28,800	29,500	30,400		
013.04 - MLLW Trenches	1,700	1,700	1,700	1,800	1,900	1,900	2,000	2,000	2,000	2,100		
013.05 - TRU Waste Retrieval	30,500	31,100	34,200	35,100	38,400	25,600	28,300	29,300	30,100	21,100		
013.06 - TRU Repackaging	34,400	35,000	36,100	37,000	38,100	39,200	39,900	41,300	42,400	43,700		
013.07 - WRAP	20,300	20,700	21,300	21,900	22,600	23,100	23,600	24,400	25,000	25,800		
013.08 - T Plant	16,000	16,200	16,800	17,200	16,100	16,500	16,800	17,400	17,900	18,400		
013.09 - Central Waste Complex (CWC)	10,600	10,800	11,100	11,800	11,700	12,000	12,300	12,700	13,000	13,500		
013.10 - ERDF	38,700	39,400	40,600	41,800	43,100	44,200	45,100	46,700	47,900	49,300		
013.12 - Integrated Disposal Facility (IDF)	32,800	33,500	34,600	35,600	36,500	37,500	38,200	39,600	40,800	41,900		
013.15 - TRU Disposition	9,800	10,000	10,400	10,700	11,000	11,300	11,500	11,800	13,000	13,600		
013.20 - Low-Level Waste Burial Grounds	1,300	1,300	1,400	1,400	1,500	1,500	1,500	1,600	1,600	0		
Cost and/or Schedule Uncertainty	2,249	1,800	1,726	1,569	1,271	1,992	14,474	30,750	42,790	32,068		
<b>Level 2 Total</b>	<b>222,249</b>	<b>225,800</b>	<b>235,026</b>	<b>241,669</b>	<b>248,771</b>	<b>241,992</b>	<b>261,474</b>	<b>286,350</b>	<b>305,990</b>	<b>291,868</b>		
Fiscal Year	2042	2043	2044	2045	2046	2047	2048	2049	2050	2051	2052	Total
013.01 - Project Management	31,200	31,800	32,800	33,400	33,300	34,900	36,100	37,200	38,100	39,200	40,400	<b>873,400</b>
013.04 - MLLW Trenches	2,200	2,300	2,300	2,300	2,300	2,400	2,600	2,600	2,700	2,700	2,900	<b>67,900</b>
013.05 - TRU Waste Retrieval	8,300	7,900	7,500	16,700	16,700	17,500	18,000	0	0	0	0	<b>472,300</b>
013.06 - TRU Repackaging	44,900	45,800	47,000	47,900	47,900	50,100	13,200	0	0	0	0	<b>1,358,000</b>
013.07 - WRAP	26,500	27,000	27,800	28,300	28,200	29,500	54,600	0	0	0	0	<b>545,000</b>
013.08 - T Plant	18,900	19,300	19,800	20,200	20,200	21,100	30,900	31,900	32,700	33,600	34,600	<b>595,900</b>
013.09 - Central Waste Complex (CWC)	13,900	14,100	14,500	14,800	14,800	15,000	15,500	16,000	16,400	16,900	17,400	<b>424,800</b>
013.10 - ERDF	50,700	51,700	53,100	54,100	54,000	56,500	58,400	60,300	61,700	63,500	65,400	<b>1,455,000</b>
013.12 - Integrated Disposal Facility (IDF)	43,000	43,900	45,000	46,000	46,000	48,000	49,500	51,300	52,400	54,100	55,600	<b>1,209,200</b>
013.15 - TRU Disposition	13,900	14,100	14,600	14,800	14,800	15,100	15,700	16,200	16,500	0	0	<b>321,600</b>
013.20 - Low-Level Waste Burial Grounds	0	0	0	0	0	0	0	0	0	0	0	<b>24,900</b>
Cost and/or Schedule Uncertainty	16,906	22,335	17,283	10,851	6,374	4,181	9,739	23,064	35,429	23,313	24,995	<b>396,724</b>
<b>Level 2 Total</b>	<b>270,406</b>	<b>280,235</b>	<b>281,683</b>	<b>289,351</b>	<b>284,574</b>	<b>294,281</b>	<b>304,239</b>	<b>238,564</b>	<b>255,929</b>	<b>233,313</b>	<b>241,295</b>	<b>7,744,724</b>

Figure 8-1. RL-0013 Annual Funding Profile

**WBS 013.06 TRU Repackaging** – This scope provides repackaging of MLLW and TRU/M waste at a commercial facility (e.g., Perma-Fix Northwest), existing onsite facilities (e.g., WRAP), and new onsite capability for MLLW and TRU/M waste such that it can be processed and repackaged to meet the WIPP waste acceptance criteria.

**WBS 013.07 WRAP** – This scope provides activities for the safe and compliant operation of WRAP and maintaining WRAP in its current dormant condition until it is required to support waste repackaging.

**WBS 013.08 T Plant** – This scope provides activities for the safe and compliant operation of T Plant and maintaining T Plant in a minimum safe condition and Base Operation (ready to serve) to support scope such as storage of sludge and TRU waste repackaging.

**WBS 013.09 Central Waste Complex (CWC)** This scope provides for the safe and compliant operation of CWC and maintaining CWC in a ready-to-serve condition.

**WBS 013.10 ERDF** – This scope provides for the transportation, receipt, and disposal of low-level radioactive waste in accordance with the waste acceptance criteria, as well as maintenance and upkeep of ERDF. Work also includes expansion of ERDF (construction of additional disposal cells) and long-term stewardship (leachate management and monitoring).

**WBS 013.12 Integrated Disposal Facility (IDF)** – This scope provides for the required maintenance of the facility prior to initiation of operations, operational startup activities, activities, and receipt and disposal of radioactive waste, primarily from the Office of River Protection.

**WBS 013.15 TRU Disposition** – This scope includes support to CCP certification activities and shipment of TRU/M waste to WIPP.

**WBS 013.20 Low-Level Waste Burial Grounds** – This scope includes the safe and compliant operation of LLBGs. The LLBGs contain two lined MWTs (218-W-5 LLBG, Trenches 31 and 34) that are within the boundaries of the LLBGs.

## 8.2 Project Schedule

Figure 1-2 depicts the schedule for completing the requirements of the M-091 Milestone series. The following tasks are included on the schedule:

- The schedule includes acquisition of new capabilities necessary to complete the M-091 Milestone series. DOE is required to follow the requirements of DOE O 413.3B when carrying out projects that qualify as a capital asset project. DOE O 413.3B requires the projects be completed in phases, referred to as CDs. The phases include initiation (CD-0), design (CD-1, CD-2), construction (CD-3), and project closeout and turnover to operations (CD-4). Typically, each CD point will require approvals before the project can transition to the next phase. In some cases, CDs can be combined and approved concurrently. The new capabilities included in the M-091 schedule are as follows:
  - Alpha Caisson Retrieval Capability
  - CH Processing Capability
  - RH Processing Capability
- Retrieval of RSW (Milestone M-091-49) will generate CH and RH wastes in a variety of packages. This waste will be characterized, resulting in designation for disposal as MLLW or TRUM waste. Once characterized, the waste will then follow the appropriate treatment pathway toward ultimate disposal.

- Generation of certifiable TRUM waste and treatment/processing of MLLW is covered under Milestone M-091-47-T01/T02. Waste requiring treatment and processing is from both the RSW retrieval operations and waste already in aboveground storage.
- The certification and shipment of TRUM waste is covered under Milestones M-091-48, M-091-49, M-091-49B, M-091-57, M-091-60, M-091-61, and M-091-62.

### **8.3 Project Constraints**

The following sections identify constraints and uncertainties associated with the ability to accomplish the M-091 Milestone work scope.

#### **8.3.1 Budget**

The schedule of activities presented in this PMP assumes that funding levels are available as given in Figure 8-1 and that the rough order of magnitude values are adequate for the identified scope. To accomplish the work scope under the M-091 Milestones, additional capabilities are necessary (see Chapter 2). As the strategy matures, there is a risk that the current budget profile may need to be adjusted to ensure acquisition of new capabilities required to accomplish the M-091 Milestone work scope.

#### **8.3.2 Delay in Retrieval or Processing Operations**

Retrieval of RSW supplies additional inventory to the TRUM waste that requires processing, certification, and shipment to WIPP. The schedule, as constructed, includes CERCLA documentation development (e.g., Action Memorandum and RAWP) as well as physical retrieval. Significant delays in the retrieval start date could result in schedule compression, which in turn would increase the potential for the budget profile to increase to an untenable level.

#### **8.3.3 New Capabilities**

Current capabilities and processing methods at the Hanford Site are not adequate to retrieve and process the alpha caisson RH RSW, process all the CH TRUM and RH TRUM wastes, or load waste for shipment of RH TRUM to WIPP.

#### **8.3.4 Higher Contamination Levels than Expected**

There is a risk that RSW retrieval operations will be impacted by higher-than-expected contamination levels, container degradation, or container location. RSW retrieval is moving into the higher-risk trenches where waste records may be less complete, and waste packaging may be more degraded than encountered to date. Although retrieval planning considers the most likely waste contamination/exposure scenario in developing the retrieval approach, there is a possibility that contamination levels (radiological or chemical) may be greater than expected, or that container degradation may be more significant than expected, requiring in-trench overpacking prior to retrieval. There is also a risk that some containers will be buried at depths that require trench shoring during retrieval. These retrieval complexities would result in schedule impacts.

#### **8.3.5 Increase in RSW Volume**

There is a risk that RSW retrieval operations will encounter waste that is either not identified in records or is commingled with non-RSW due to inaccurate records or soil contamination. Based on inspections of previously excavated waste containers in the trenches and handling the waste at the point of generation, the volume of waste to be retrieved is uncertain. Inability to identify the specific containers may result in the retrieval of increased volumes of waste before determining that the RSW waste sought has been retrieved. The volumes and characteristics of RSW waste to be processed are based upon existing records.

### **8.3.6 Increase in Volume of TRUM Waste to Be Shipped to WIPP**

There is a risk that volumes could increase if smaller quantities of waste must be placed into the waste packages to meet WIPP requirements. Additional size reduction, as an example, increases the amount of processing time and increases the number of shipments to WIPP. The WIPP acceptance criteria allow for a limited number of waste packages that exceed a surface contact radiological activity of 100 R/hr. Much of the RH RSW waste that will be generated as part of the alpha caisson retrieval could exceed the 100 R/hr activity limit. This would result in the need for additional size reduction and separation into separate waste containers or incorporation of shielding into the waste package, thus increasing the total number of RH TRUM packages and consequently increasing the number and duration of shipments to WIPP.

### **8.3.7 Final Certification and Shipment**

Final certification and shipment of TRUM waste to WIPP is dependent on support from CCP and WIPP. CCP has been contracted by CBFO to characterize and certify TRU/M waste packaged at the Hanford Site, as well as other DOE sites. Shipments to WIPP are dependent upon several factors, including the availability of shipping casks, overall shipping priorities established by CBFO, timely WIPP approvals of new waste forms, and the availability of CCP resources to certify wastes. These factors could impact the ability to meet planned shipping schedules and cause prolonged storage at CWC.

## **8.4 Key Deliverables/Products**

Key deliverables/products that will be developed in support of the M-091 work scope include the submittal of annual revisions of this PMP on June 30 each year until the M-091 Milestones are completed. The PMP will include the funding profile, which includes a lifecycle projection of annual funding required to accomplish project scope in accordance with the top-level WBS and schedule (Figure 8-1). The PMP will detail project objectives, work schedules, expected outputs, integration with other programs and projects, and project management alternatives consistent with established agreements and other project constraints. The PMP will also contain information on the status of the milestones within the M-091 series that have come due since the last revision or are approaching their due date.

## **8.5 Performance Measurement**

DOE conducts a performance measurement of the M-091 Milestones to provide an objective assessment of work accomplishments and progress against the baseline plan (scope, schedule, and budget) to manage the baseline effectively and to provide data for management of decision making and reporting.

The project performance is measured by comparing the amount of work planned with actual accomplishments and costs to determine whether cost and schedule performance is consistent with the baseline plan. DOE monitors the project performance monthly by comparing the budgeted cost of work schedule to actual work performed and the cost of that work.

## **8.6 Project Interface Control**

DOE controls project interfaces through contract requirements, statements of work, interface control documents, and/or memoranda of agreement/understanding. These documents define the interface and/or service, roles and responsibilities, accountabilities, and authorities.



Interface among the M-091-00 Milestone TRUM waste and MLLW activities and other projects, including waste generating programs for inventory tracking and capacity configuration purposes, is essential for successful project execution. The following waste activities, projects, facilities, and organizations require integration for successful project execution:

- Central Plateau Cleanup Company
- Hanford Mission Integration Solutions
- Hanford Site waste generators of TRU/M waste
- CCP and WIPP
- MWTs 31 and 34
- WRAP
- T Plant
- CWC
- RSW retrieval
- ERDF
- IDF
- Commercial processing facilities

All Hanford Site generators of TRU/M solid waste that is destined for disposal at WIPP are required to meet the current requirements of HNF-EP-0063, *Hanford Site Solid Waste Acceptance Criteria*. The requirements include the responsibility of the generator to provide TRU/M waste that is WIPP certifiable and acceptable knowledge to support waste certification at the point of generation.

For TRU/M waste that cannot be packaged into WIPP-certifiable containers at the point of generation, the future large-container CH and RH capabilities being acquired under the M-091 work scope could be used to repackage this waste, along with commercial facilities. Currently, it is assumed that TRU/M waste generated during Hanford Site cleanup activities will be compliantly packaged at the point of generation. If, at the time of conceptual design for the future capability under M-091, this is not the case, the scope of the new capability may be expanded to accommodate the repackaging of other TRU/M waste beyond M-091 scope.

The annual sitewide solid waste forecast includes Hanford Site generator TRU/M waste projections. At this time, no impacts to the M-091 work scope are anticipated because of the additional volume of CERCLA TRU/M waste to be certified and shipped to WIPP. Potential impacts are evaluated as waste volume projections are updated.

## 8.7 Reporting

Reporting requirements are described in Chapter 4, “Agreement Management,” of the Tri-Party Agreement (Ecology et al., 1989a). The primary interface for reporting and notification is from DOE Project Managers to their regulatory counterparts or through the Interagency Management and Integration Team. DOE typically provides a status on the M-091 Milestones to the Ecology Project Manager monthly, which is documented in the AR. In addition, monthly M-091 Milestone Project Manager Meetings are held. The roles and responsibilities for the Project Manager and the Integration Team are contained in Sections 4.1 and 4.2 of the Tri-Party Agreement, respectively (Ecology et al., 1989a).

## **8.8 Change Management**

Tri-Party Agreement (Ecology et al., 1989a) and baseline change management are discussed in the following sections.

### **8.8.1 Tri-Party Agreement Change Management**

Tri-Party Agreement (Ecology et al., 1989a) change management is described in the Tri-Party Agreement Action Plan, Section 12.0, “Changes to the Agreement” (Ecology et al., 1989b). The appropriate authority level for approval of a change is based on the content of the change. All changes will be processed using the change control form provided in Section 12.3.1, “Change Control Form,” of the Tri-Party Agreement Action Plan.

Changes to the M-091 Milestone PMP will be in accordance with the Tri-Party Agreement Action Plan, Section 9.0, “Documentation and Records,” and Section 9.3, “Document Revision” (Ecology et al., 1989b). Changes will be documented in the AR. Changes or revisions to the PMP may also result in the need to modify Tri-Party Agreement milestones. Such changes are subject to the requirements of Section 12.0, “Changes to the Agreement,” of the Tri-Party Agreement Action Plan.

DOE will submit revisions to this PMP as required by the M-091 Milestones. The PMP revision will include DOE plans and schedules for addressing all requirements set forth in the M-091 Milestone series. Each revision of the M-091-03 Milestone PMP will, after approval by Ecology, supersede previous M-091-03 Milestone PMPs.

DOE will submit the PMP revision to Ecology for review and approval as primary documents pursuant to the Tri-Party Agreement Action Plan, Section 9.2.1 (Ecology et al., 1989b). DOE will implement the PMP, as approved.

### **8.8.2 Baseline Change Management**

DOE maintains a contract budget log under configuration control and management that reconciles to the current contract target costs. Changes are controlled and formally reviewed and approved. DOE requires the contractor to maintain a baseline change process that is approved by DOE.

This page intentionally left blank.

## 9 References

- 40 CFR 268, "Land Disposal Restrictions," *Code of Federal Regulations*. Available at: <http://www.gpo.gov/fdsys/pkg/CFR-2012-title40-vol28/xml/CFR-2012-title40-vol28-part268.xml>.
- 268.2, "Definitions Applicable in This Part."
- 268.40, "Applicability of Treatment Standards."
- 268.45, "Treatment Standards for Hazardous Debris."
- 268.50, "Prohibition on Storage of Restricted Wastes."
- CHPRC-02916, 2016, *M-091 Engineering Alternatives Study*, Rev. 0, CH2M HILL Plateau Remediation Company, Richland, Washington. Available at: <https://pdw.hanford.gov/document/0074662H>.
- CHPRC-03264, 2017, *M-091-52 Alternative Evaluation*, Rev. 0, CH2M HILL Plateau Remediation Company, Richland, Washington. Available at: <https://pdw.hanford.gov/document/0068322H>.
- Comprehensive Environmental Response, Compensation, and Liability Act of 1980*, 42 USC 9601, et seq., Pub. L. 107-377, December 31, 2002. Available at: <https://www.csu.edu/cerc/researchreports/documents/CERCLASummary1980.pdf>.
- DOE O 413.3B, 2010, *Program and Project Management for the Acquisition of Capital Assets*, U.S. Department of Energy, Washington, D.C. Available at: <https://www.directives.doe.gov/directives-documents/400-series/0413.3-BOrder-b/view>.
- DOE/RL-2003-48, 2003, *218-W-4C Sampling and Analysis Plan*, Rev. 0, U.S. Department of Energy, Richland Operations Office, Richland, Washington. Available at: <http://pdw.hanford.gov/arpir/index.cfm/viewDoc?accession=0082375H>.
- DOE/RL-2004-32, 2004, *218-E-12B Burial Ground Sampling and Analysis Plan*, Rev. 0, U.S. Department of Energy, Richland Operations Office, Richland, Washington. Available at: <http://pdw.hanford.gov/arpir/index.cfm/viewDoc?accession=D7228581>.
- DOE/RL-2004-36, 2004, *Action Memorandum for the Non-Time Critical Removal Action for the 224-B Plutonium Concentration Facility*, Rev. 0, U.S. Department of Energy, Richland Operations Office, Richland, Washington. Available at: <http://pdw.hanford.gov/arpir/index.cfm/viewDoc?accession=D6731933>.
- DOE/RL-2004-68, 2005, *Action Memorandum for the Non-Time-Critical Removal Action for the 224-T Plutonium Concentration Facility*, Rev. 0, U.S. Department of Energy, Richland Operations Office, Richland, Washington. Available at: <http://pdw.hanford.gov/arpir/index.cfm/viewDoc?accession=DA428391>.
- DOE/RL-2004-70, 2006, *218-W-4B Burial Ground Sampling and Analysis Plan*, Rev. 0, U.S. Department of Energy, Richland Operations Office, Richland, Washington. Available at: <http://pdw.hanford.gov/arpir/index.cfm/viewDoc?accession=DA02967771>.
- DOE/RL-2004-71, 2006, *218-W-3A Burial Ground Sampling and Analysis Plan*, Rev. 0, U.S. Department of Energy, Richland Operations Office, Richland, Washington. Available at: <http://pdw.hanford.gov/arpir/index.cfm/viewDoc?accession=DA02722900>.

- DOE/RL-2010-106, 2011, *90% Design Remedial Design Report Addendum for the Disposition of Tank D-10 from Cell 30 within the 221-U Plant Canyon Facility*, Rev. 0, U.S. Department of Energy, Richland Operations Office, Richland, Washington. Available at: <http://pdw.hanford.gov/arpir/index.cfm/viewDoc?accession=0093733>.
- DOE/RL-2014-13-ADD1, 2016, *Remedial Design Report/Remedial Action Work Plan for 300-FF-2 Soils*, Rev. 1, U.S. Department of Energy, Richland Operations Office, Richland, Washington. Available at: <http://pdw.hanford.gov/arpir/index.cfm/viewDoc?accession=0076809H>.
- DOE/RL-2020-09, 2020, *2019 Hanford Land Disposal Restrictions (LDR) Full Report*, Rev. 0, U.S. Department of Energy, Richland Operations Office, Richland, Washington. Available at: <https://pdw.hanford.gov/document/AR-03939>.
- DOE/RL-2015-74, 2015, *Hanford Facility Dangerous Waste Part B Permit Application; Low-Level Burial Grounds Trenches 31-34-94, T Plant Complex, and Central Waste Complex-Waste Receiving and Processing Facility*, Rev. 0, U.S. Department of Energy, Richland Operations Office, Richland, Washington. Available at: <https://pdw.hanford.gov/document/0078647H>.
- DOE/RL-2021-47, 2022, *2022 Hanford Lifecycle Scope, Schedule and Cost Report*, Rev. 0, U.S. Department of Energy, Richland Operations Office, Richland, Washington. Available at: <https://pdw.hanford.gov/document/AR-18536>.
- DOE/WIPP-02-3122, 2020, *Transuranic Waste Acceptance Criteria for the Waste Isolation Pilot Plant*, Rev. 10, U.S. Department of Energy, Carlsbad Field Office, Carlsbad, New Mexico. Available at: [https://wipp.energy.gov/library/wac/DOE-WIPP-02-3122\\_R10-Final\\_Updated\\_Eff\\_Date\(sig\\_on\\_file\).pdf](https://wipp.energy.gov/library/wac/DOE-WIPP-02-3122_R10-Final_Updated_Eff_Date(sig_on_file).pdf).
- Ecology, EPA, and DOE, 1989a, *Hanford Federal Facility Agreement and Consent Order*, 2 vols., as amended, State of Washington, Department of Ecology, U.S. Environmental Protection Agency, and U.S. Department of Energy, Olympia, Washington. Available at: <http://www.hanford.gov/?page=81>.
- Ecology, EPA, and DOE, 1989b, *Hanford Federal Facility Agreement and Consent Order Action Plan*, as amended, State of Washington, Department of Ecology, U.S. Environmental Protection Agency, and U.S. Department of Energy, Olympia, Washington. Available at: <http://www.hanford.gov/?page=82>.
- EPA, 2005, *U.S. Department of Energy 100 K Area K Basins Hanford Site – 100 Area Benton County, Washington Amended Record of Decision, Decision Summary and Responsiveness Summary*, U.S. Environmental Protection Agency, Region 10, Seattle, Washington. Available at: <http://pdw.hanford.gov/arpir/index.cfm/viewDoc?accession=DA450992>.
- EPA, DOE, and Ecology, 2005, *Record of Decision 221-U Facility (Canyon Disposition Initiative) Hanford Site, Washington*, U.S. Environmental Protection Agency, U.S. Department of Energy, and State of Washington, Department of Ecology, Olympia, Washington. Available at: <http://pdw.hanford.gov/arpir/index.cfm/viewDoc?accession=DA01060264>.
- EPA, Ecology, and DOE, 2007, *Amendment to the Record of Decision for the USDOE Hanford Environmental Restoration Disposal Facility*, U.S. Environmental Protection Agency, State of Washington, Department of Ecology, and U.S. Department of Energy, Olympia, Washington. Available at: <http://pdw.hanford.gov/arpir/index.cfm/viewDoc?accession=DA04316406>.

EPA, Ecology, and DOE, 2011, *Record of Decision Hanford 200 Area Superfund Site 200-CW-5 and 200-PW-1, 200-PW-3, and 200-PW-6 Operable Units*, U.S. Environmental Protection Agency, State of Washington, Department of Ecology, and U.S. Department of Energy, Olympia, Washington. Available at:  
<http://pdw.hanford.gov/arpir/index.cfm/viewDoc?accession=0093644>.

EPA/ROD/R10-01/119, 2001, *EPA Superfund Record of Decision: Hanford 300-Area (USDOE), Benton County, Washington*, U.S. Environmental Protection Agency, Washington State Department of Ecology, and U.S. Department of Energy, Olympia, Washington. Available at:  
<https://semspub.epa.gov/work/HQ/188466.pdf>.

*Hazardous and Solid Waste Amendments of 1984*, Pub. L. 98-616, Nov. 8, 1984, 98 Stat. 3221.

HNH-EP-0063, 2020, *Hanford Site Solid Waste Acceptance Criteria*, Rev. 19, CH2M HILL Plateau Remediation Company, Richland, Washington.

M-91-19-02, 2021, *Federal Facility Agreement and Consent Order change Control Form: Establish Due Date of Major Milestone M-091-00 in TPA Appendix D*, dated October 1, U.S. Department of Energy, Richland Operations Office, U.S. Environmental Protection Agency, and Washington State Department of Ecology, Richland, Washington. Available at:  
<https://pdw.hanford.gov/document/AR-16826>.

M-91-19-03, 2021, *Federal Facility Agreement and Consent Order change Control Form: Modification of M-091 Series Milestones and Target Dates in TPA Appendix D*, dated September 22, U.S. Department of Energy, Richland Operations Office, and Washington State Department of Ecology, Richland, Washington. Available at: <https://pdw.hanford.gov/document/AR-16827>.

NM4890139088-TSDF, 2018, *Waste Isolation Pilot Plant Hazardous Waste Permit*, Attachment C, "Waste Analysis Plan," New Mexico Environment Department, Santa Fe, New Mexico. Available at:  
<https://hwbdocuments.env.nm.gov/Waste%20Isolation%20Pilot%20Plant/181200/181200%20WIPP%20Permit%20PDF/Attachment%20C%202012-2018.pdf>.

*Resource Conservation and Recovery Act of 1976*, Pub. L. 94-580, 42 USC 6901, et seq. Available at:  
<https://www.govinfo.gov/content/pkg/STATUTE-90/pdf/STATUTE-90-Pg2795.pdf>.

WAC 173-303, "Dangerous Waste Regulations," *Washington Administrative Code*, Olympia, Washington. Available at: <http://apps.leg.wa.gov/WAC/default.aspx?cite=173-303>.

303-040, "Definitions."

a

This page intentionally left blank.

## **Appendix A**

### **Glossary**



This page intentionally left blank.

## Contents

<b>A1</b>	<b>Glossary.....</b>	<b>A-1</b>
<b>A2</b>	<b>References.....</b>	<b>A-3</b>

This page intentionally left blank.

## Terms

DOT	U.S. Department of Transportation
LLW	low-level waste
MLLW	mixed low-level waste
RH	remote-handled
RSW	retrievably stored waste
SLB2	standard large box 2
SWB	standard waste box
SWIFT	Solid Waste Integrated Forecast
SWITS	Solid Waste Information and Tracking System
TRU	transuranic
TRUM	transuranic mixed
WIPP	Waste Isolation Pilot Plant

This page intentionally left blank.

## A1 Glossary

Specialized words used in the waste management plan are defined in this appendix.

**Caissons**, as used within the M-091 Milestone series (Ecology et al., 1989, *Hanford Federal Facility Agreement and Consent Order Action Plan*), are the four concrete retaining structures containing retrievably stored waste (RSW) in the 218-W-4B Burial Ground.

**Certification**, as used within the M-091 Milestone series, is defined as follows:

- All activities necessary for waste to be packaged, in order to meet the Waste Isolation Pilot Plant (WIPP) acceptance criteria, are completed. The volume of waste certified is the volume of waste given to the Central Characterization Project for certification verification. If subsequent WIPP certification reveals that the waste cannot be shipped to WIPP, this waste will not count toward meeting the milestone volume requirements (and will be subtracted from meeting such requirements) until it has been determined to meet the WIPP waste acceptance criteria.
- The transuranic mixed (TRUM) waste shipped to Idaho may also count toward certification based upon actual shipment to Idaho and contingent upon the waste not returning to Hanford Site.
- The waste has been treated to meet land disposal restriction treatment standards.

**Contact-Handled** waste is a waste container with a surface dose rate less than or equal to 200 mrem/hr.

**Designation** is the process of determining whether a waste is regulated under the dangerous waste lists (WAC 173-303-080, “Dangerous Waste Regulations,” “Dangerous Waste Lists,” through WAC 173-303-082, “Dangerous Waste Sources”), characteristics (WAC 173-303-090, “Dangerous Waste Characteristics”), or criteria (WAC 173-303-100, “Dangerous Waste Criteria”). The process for designating wastes is described in WAC 173-303-070, “Designation of Dangerous Waste.” Waste that has been designated as dangerous may be either dangerous waste or extremely hazardous waste. These regulations allow the use of acceptable knowledge, surrogate sampling, and other measures for designation to minimize radiation exposure to workers and to reduce costs.

**Low-Level Waste (LLW)** is defined as radioactive waste that is not spent fuel, high-level waste, transuranic (TRU) waste, byproduct material, or naturally occurring radioactive material.

**Mixed Waste** is a waste that contains a nonradioactive hazardous component and, as defined by 10 CFR 20.1003, “Standards for Protection Against Radiation,” “Definitions,” source, special nuclear material, or byproduct material subject to the *Atomic Energy Act of 1954*.

**Retrievably Stored Waste (RSW)**, as used within the M-091 Milestone series, is or was believed to meet the TRU waste criteria when it was placed in the 218-W-4B, 218-W-4C, 218-W-3A, and 218-E-12B Burial Ground trenches after May 6, 1970. RSW does not include waste in containers that have deteriorated to the point that they cannot be retrieved and stabilized (e.g., placed in overpacks) in a manner that would allow them to be transported and designated without posing significant risks to workers, the public, or the environment. With respect to any such containers, and with respect to any release of RSW, how to move forward will be determined through the cleanup process set forth in the *Resource Conservation and Recovery Act of 1976*; RCW 70.105, “Hazardous Waste Management”; or the *Comprehensive Environmental Response, Compensation, and Liability Act of 1980*, as appropriate. Those processes may result in additional requirements for the remediation of such wastes.

The U.S. Atomic Energy Commission (U.S. Department of Energy predecessor agency) initially defined TRU waste as “waste with known or detectable contamination of transuranium nuclides.” In March 1970,

the U.S. Atomic Energy Commission directed field sites to segregate TRU waste and place it in retrievable storage that would allow the waste to be retrieved within 20 years. Before this date, this waste was disposed as LLW.

In 1973, the TRU waste segregation limit was established at 10 nCi/g of TRU isotopes. In 1982, the limit was changed to 100 nCi/g. Congress enacted this limit in 1992. Because of the changing definition of TRU waste, waste generated and stored between 1970 and 1982 could contain less than the current threshold of 100 nCi/g for defining TRU waste. This waste has been termed suspect TRU waste because some of it will be designated as LLW following radiological characterization.

**Remote-Handled (RH)** waste is a waste container with a surface dose rate greater than 200 mrem/hr. The RH waste volumes are based on the sum of all containers listed in Solid Waste Information and Tracking System (SWITS) with a cumulative contact dose rate greater than 200 mrem/hr, or have a SWITS shielding code of lead, steel, or concrete, and coded in SWITS as RH.

**Small and Large Containers** have different meanings, depending on whether they are used in reference to mixed low-level waste (MLLW) or TRUM waste. When referring to MLLW, small containers are less than 10 m<sup>3</sup> (353.2 ft<sup>3</sup>), including 208.2 L (55 gal) drums. When referring to TRUM waste, small containers are 208.2 L (55 gal) drums or small containers, even if overpacked in 321.75 L (85 gal) drums and WIPP standard waste boxes (SWBs). A large container is anything that is not defined as a small container, and vice versa.

**Standard Large Box 2 (SLB2)** is a rectangular steel container with an external width of 1.75 m (5.75 ft), an external height of 1.83 m (6 ft), and an external length of 2.74 m (9 ft). The internal cavity dimensions are 1.6 m (5.25 ft) wide, 1.68 m (5.5 ft) high, and 2.6 m (8.5 ft) long. The SLB2 was qualified in 2004 as meeting the U.S. Department of Transportation (DOT) requirements for specification 7A Type A packaging.

**Standard Waste Box (SWB)** is a 1.8 m<sup>3</sup> (63.57 ft<sup>3</sup>) steel container that is approximately 0.94 m (3.1 ft) high, 1.8 m (5.9 ft) long, and 1.4 m (4.6 ft) wide. The SWB was qualified in 1988 as meeting DOT requirements for specification 7A Type A packaging.

**Solid Waste Integrated Forecast (SWIFT)** database contains estimates of future waste volumes and characteristics forecast by waste-generating units. The waste generating units provide basic information that is incorporated into the SWIFT database. This forecast is updated annually and published in the SWIFT report.

**Solid Waste Information and Tracking System (SWITS)** is a Hanford Site database containing records of waste containers stored at Hanford and contains data (e.g., volume; container information; and radiological, physical, and dangerous waste characteristics) about each container of stored waste considered within the scope of the M-091 Milestone series. SWITS is a dynamic database that is updated frequently to reflect waste receipts, processing, and shipment volumes; as a result, data presented in this revision of the Project Management Plan may differ from previous versions.

**Transuranic (TRU)** waste meets the definition, in the *Waste Isolation Pilot Plant Land Withdrawal Act* (Section 2.18), of radioactive waste containing more than 100 nCi of alpha-emitting transuranic isotopes per gram of waste, with half-lives greater than 20 years.

## A2 References

10 CFR 20.1003, “Standards for Protection Against Radiation,” “Definitions,” *Code of Federal Regulations*. Available at: <https://www.nrc.gov/reading-rm/doc-collections/cfr/part020/part020-1003.html>.

*Atomic Energy Act of 1954*, Pub. L. 83-703 as amended, 42 USC 2011, et seq., 68 Stat. 919. Available at: <https://www.govinfo.gov/content/pkg/STATUTE-68/pdf/STATUTE-68-Pg919.pdf#page=30>.

*Comprehensive Environmental Response, Compensation, and Liability Act of 1980*, 42 USC 9601, et seq., Pub. L. 107-377, December 31, 2002. Available at: <https://www.csu.edu/cerc/researchreports/documents/CERCLASummary1980.pdf>.

Ecology, EPA, and DOE, 1989, *Hanford Federal Facility Agreement and Consent Order Action Plan*, Washington State Department of Ecology, U.S. Environmental Protection Agency, and U.S. Department of Energy, Olympia, Washington. Available at: <http://www.hanford.gov/?page=82>.

RCW 70.105, “Hazardous Waste Management,” *Revised Code of Washington*, Olympia, Washington. Available at: <http://apps.leg.wa.gov/RCW/default.aspx?cite=70.105>.

*Resource Conservation and Recovery Act of 1976*, Pub. L. 94-580, 42 USC 6901, et seq. Available at: <https://www.govinfo.gov/content/pkg/STATUTE-90/pdf/STATUTE-90-Pg2795.pdf>.

WAC 173-303, “Dangerous Waste Regulations,” *Washington Administrative Code*, Olympia, Washington. Available at: <http://apps.leg.wa.gov/WAC/default.aspx?cite=173-303>.

303-070, “Designation of Dangerous Waste.”

303-080, “Dangerous Waste Lists.”

303-082, “Dangerous Waste Sources.”

303-090, “Dangerous Waste Characteristics.”

303-100, “Dangerous Waste Criteria.”

*Waste Isolation Pilot Plant Land Withdrawal Act*, Pub. L. 102-579. Available at: <http://www.wipp.energy.gov/library/CRA/BaselineTool/Documents/Regulatory%20Tools/10%20WIPPLWA1996.pdf>.



This page intentionally left blank.

**Appendix B**  
**Applicable Regulatory Requirements**

This page intentionally left blank.

## Contents

<b>B1</b>	<b>Applicable Regulatory Requirements .....</b>	<b>B-1</b>
B1.1	<i>National Environmental Policy Act of 1969 .....</i>	B-1
B1.2	<i>Resource Conservation and Recovery Act of 1976, as Amended by the Hazardous and Solid Waste Amendments of 1984 .....</i>	B-1
B1.3	<i>Comprehensive Environmental Response, Compensation, and Liability Act of 1980 .....</i>	B-1
B1.4	<i>“Washington State Hazardous Waste Management Act of 1976” (RCW 70.105) .....</i>	B-1
B1.5	<i>“Washington Clean Air Act” (RCW 70.94) .....</i>	B-2
B1.6	<i>U.S. Department of Transportation .....</i>	B-2
<b>B2</b>	<b>References .....</b>	<b>B-2</b>

This page intentionally left blank.

## Terms

CERCLA	<i>Comprehensive Environmental Response, Compensation, and Liability Act of 1980</i>
DOE	U.S. Department of Energy
DOT	U.S. Department of Transportation
Ecology	Washington State Department of Ecology
EPA	U.S. Environmental Protection Agency
RCRA	<i>Resource Conservation and Recovery Act of 1976</i>
ROD	record of decision
TRU	transuranic
WDOH	Washington State Department of Health
WGA	Western Governors' Association

This page intentionally left blank.

## **B1 Applicable Regulatory Requirements**

Mixed waste management activities will consider the requirements described in the following sections, as well as any other applicable regulations or U.S. Department of Energy (DOE) requirements.

### **B1.1 National Environmental Policy Act of 1969**

DOE/EIS-0391, *Final Tank Closure and Waste Management Environmental Impact Statement for the Hanford Site, Richland, Washington (TC & WM EIS)*, was issued in December 2012. A record of decision (ROD) has been issued (78 FR 240, “Record of Decision for the Final Tank Closure and Waste Management Environmental Impact Statement for the Hanford Site, Richland, Washington”).

### **B1.2 Resource Conservation and Recovery Act of 1976, as Amended by the Hazardous and Solid Waste Amendments of 1984**

Federal regulations, implementing the *Resource Conservation and Recovery Act of 1976* (RCRA) and RCRA corrective action, address the requirements for hazardous wastes, including treatment, storage, disposal, and transportation (40 CFR 260, “Hazardous Waste Management System: General” through 40 CFR 271, “Requirements for Authorization of State Hazardous Waste Programs”).

The U.S. Environmental Protection Agency (EPA) has authorized the Washington State Department of Ecology (Ecology) to administer the State statute and regulations (RCW 70.105, “Hazardous Waste Management;” WAC 173-303, “Dangerous Waste Regulations”), in lieu of federal RCRA regulations.

### **B1.3 Comprehensive Environmental Response, Compensation, and Liability Act of 1980**

The *Comprehensive Environmental Response, Compensation, and Liability Act of 1980* (CERCLA) addresses spill cleanups and hazardous substances left at past practice waste sites. DOE performs investigation and response actions for release of hazardous substances at the Hanford Site as the lead agency delegated authority under CERCLA Section 104, “Response Authorities,” by Executive Order 12580, *Superfund Implementation*. In 1989, pursuant to CERCLA Section 120, “Federal Facilities,” DOE executed an agreement with EPA and Ecology governing execution of CERCLA response actions and measures to bring the Hanford Site into compliance with RCRA treatment, storage, and disposal unit and corrective action requirements. The agreement is called the Tri-Party Agreement (Ecology et al., 1989, *Hanford Federal Facility Agreement and Consent Order*). Either EPA or Ecology will assume responsibility as lead regulatory agency for various response actions at the Hanford Site.

In September 2012, DOE submitted an M-016-93 implementation work plan (DOE/RL-2009-130, *M-16-93 Work Plan*) to EPA proposing the acquisition of capabilities necessary to prepare transuranic (TRU) mixed waste generated by CERCLA cleanup actions at the Hanford Site for disposal at the Waste Isolation Pilot Plant. This work plan reflected retrieval decisions, projected waste volumes, and schedules from all CERCLA cleanup actions authorized in RODs and action memoranda at the Hanford Site. As part of the approval process for RODs and action memoranda, EPA and the DOE, Richland Operations Office will obtain Ecology concurrence to ensure that wastes from CERCLA operable units for which Ecology is the lead regulatory agency, are properly planned.

### **B1.4 “Washington State Hazardous Waste Management Act of 1976” (RCW 70.105)**

RCW 70.105 authorizes Ecology to regulate the treatment, storage, disposal, and transportation of dangerous waste in Washington State. Mixed waste is dangerous waste that is mixed with



radioactive elements. Chemical characteristics of mixed waste are regulated under RCRA and WAC 173-303, while radioactive characteristics are regulated by DOE under the *Atomic Energy Act of 1954*. Ecology has promulgated dangerous waste regulations in WAC 173-303. Mixed waste generation activities are subject to generator requirements. Mixed waste management activities that cannot use generator provisions must be conducted according to dangerous waste permits under WAC 173-303 in order to operate.

### **B1.5 “Washington Clean Air Act” (RCW 70.94)**

The Ecology Nuclear Waste Program regulates air toxicity and criteria pollutant emissions from the Hanford Site. Ecology promulgates and enforces the regulations under RCW 70.94, “Washington Clean Air Act.” Ecology implementing requirements (e.g., WAC 173-400, “General Regulations for Air Pollution Sources,” and WAC 173-460, “Controls for New Sources of Toxic Air Pollutants”) specify review of new source emissions, permitting, applicable controls, reporting, notifications, and compliance with general standards for applicable sources of Hanford Site emissions.

The Washington State Department of Health (WDOH) Radiation Protection Division regulates radioactive air emissions statewide, as authorized by EPA and Washington State legislative and regulatory authority. WDOH implements the state requirements, adopts and implements the federal requirements under WAC 246-247, “Radiation Protection—Air Emissions,” and enforces the federal requirements under authority delegated by EPA. Before beginning any work that would result in creating a new or modified source of radioactive airborne emissions, a notice of construction application must be submitted for review and approval by WDOH, resulting in issuance of an operating license. Typical license requirements for radioactive air emission sources include ensuring adequate emission controls, emissions monitoring/sampling, and annual reporting of emissions.

### **B1.6 U.S. Department of Transportation**

Onsite transportation of waste is managed by DOE in accordance with DOE/RL-2001-36, *Hanford Site-wide Transportation Safety Document*. Transportation of waste offsite is regulated by DOT. A Memorandum of Understanding between the Western Governors’ Association (WGA) and DOE (WGA and DOE-CBFO, 2019, *Regional Protocol for the Safe and Uneventful Transfer of Transuranic Waste*) requires that DOE conduct TRU waste shipments through the western states in accordance with the protocols contained in WGA and DOE-CBFO, 2017, *WIPP Transportation Safety Program Implementation Guide*. Shipments within the same DOE site, or other TRU waste shipments as agreed to between DOE and the states, are not included. Shipments of TRU waste to local commercial firms using road closures are acceptable when performed in accordance with DOE/RL-2001-36 as authorized under 19-NSD-0045\_RL, Contract “Number DE-AC06-08RL14788 – Transmittal of Revision F of the U.S. Department of Energy (DOE) Exemptions DOE-E1403 and DOE-E1405.”

The type of packaging required to transport the waste depends, in part, on the form and specific activity of the material, and waste acceptance criteria for the receiving facility. DOE is responsible for determining the appropriate container for the material to be transported. DOE ensures that each waste package being transported offsite meets DOT regulations for design, material, manufacturing methods, and testing.

## **B2 References**

19-NSD-0045\_RL, 2019, “Contract Number DE-AC06-08RL14788 – Transmittal of Revision F of the U.S. Department of Energy (DOE) Exemptions DOE-E1403 and DOE-E1405” (letter to L. Ty Blackford, CH2M HILL Plateau Remediation Company from J.C. Connerly), U.S. Department of Energy, Office of River Protection, Richland, Washington, September 19.

- 40 CFR 260, "Hazardous Waste Management System: General," *Code of Federal Regulations*. Available at: <http://www.gpo.gov/fdsys/pkg/CFR-2010-title40-vol25/xml/CFR-2010-title40-vol25-part260.xml>.
- 40 CFR 271, "Requirements for Authorization of State Hazardous Waste Programs," *Code of Federal Regulations*. Available at: <http://www.gpo.gov/fdsys/pkg/CFR-2012-title40-vol28/pdf/CFR-2012-title40-vol28-part271.pdf>.
- 78 FR 240, "Record of Decision for the Final Tank Closure and Waste Management Environmental Impact Statement for the Hanford Site, Richland, Washington," *Federal Register*, Vol. 79, No. 240, pp. 75913-75919, December 13, 2013. Available at: [http://www.hanford.gov/files.cfm/TCWM\\_ROD\\_FR\\_pub\\_12\\_13\\_13.pdf](http://www.hanford.gov/files.cfm/TCWM_ROD_FR_pub_12_13_13.pdf).
- Atomic Energy Act of 1954*, Pub. L. 83-703 as amended, 42 USC 2011, et seq., 68 Stat. 919. Available at: <https://www.govinfo.gov/content/pkg/STATUTE-68/pdf/STATUTE-68-Pg919.pdf#page=30>.
- Comprehensive Environmental Response, Compensation, and Liability Act of 1980*, 42 USC 9601, et seq., Pub. L. 107-377, December 31, 2002. Available at: <https://www.csu.edu/cerc/researchreports/documents/CERCLASummary1980.pdf>.
- Section 104, "Response Authorities."
- Section 120, "Federal Facilities."
- DOE/EIS-0391, 2012, *Final Tank Closure and Waste Management Environmental Impact Statement for the Hanford Site, Richland, Washington (TC & WM EIS)*, U.S. Department of Energy, Office of River Protection, Richland, Washington. Available at: <http://energy.gov/nepa/downloads/eis-0391-final-environmental-impact-statement>.
- DOE/RL-2001-36, 2017, *Hanford Sitewide Transportation Safety Document*, Rev. 2, U.S. Department of Energy, Richland Operations Office, Richland, Washington. Available at: <http://pdw.hanford.gov/document/AR-15043>.
- DOE/RL-2009-130, 2012, *M-16-93 Work Plan*, Rev. 2, U.S. Department of Energy, Richland Operations Office, Richland, Washington. Available at: <http://pdw.hanford.gov/arpir/index.cfm/viewDoc?accession=0090566>.
- Ecology, EPA, and DOE, 1989, *Hanford Federal Facility Agreement and Consent Order*, 2 vols., as amended, State of Washington, Department of Ecology, U.S. Environmental Protection Agency, and U.S. Department of Energy, Olympia, Washington. Available at: <http://www.hanford.gov/?page=81>.
- Executive Order 12580, 1987, *Superfund Implementation*, Ronald W. Reagan, January 23. Available at: <http://www.archives.gov/federal-register/codification/executive-order/12580.html>.
- Hazardous and Solid Waste Amendments of 1984*, Public Law 98-616, Nov. 8, 1984, 98 Stat. 3221.
- National Environmental Policy Act of 1969*, 42 USC 4321, et seq. Available at: <https://uscode.house.gov/view.xhtml?path=/prelim@title42/chapter55&edition=prelim>.
- RCW 70.94, "Washington Clean Air Act," *Revised Code of Washington*, Olympia, Washington. Available at: <http://apps.leg.wa.gov/RCW/default.aspx?cite=70.94>.

RCW 70.105, “Hazardous Waste Management,” *Revised Code of Washington*, Olympia, Washington. Available at: <http://apps.leg.wa.gov/RCW/default.aspx?cite=70.105>.

*Resource Conservation and Recovery Act of 1976*, Pub. L. 94-580, 42 USC 6901, et seq. Available at: <https://www.govinfo.gov/content/pkg/STATUTE-90/pdf/STATUTE-90-Pg2795.pdf>.

WAC 173-303, “Dangerous Waste Regulations,” *Washington Administrative Code*, Olympia, Washington. Available at: <http://apps.leg.wa.gov/WAC/default.aspx?cite=173-303>.

WAC 173-400, “General Regulations for Air Pollution Sources,” *Washington Administrative Code*, Olympia, Washington. Available at: <http://apps.leg.wa.gov/WAC/default.aspx?cite=173-400>.

WAC 173-460, “Controls for New Sources of Toxic Air Pollutants,” *Washington Administrative Code*, Olympia, Washington. Available at: <http://apps.leg.wa.gov/WAC/default.aspx?cite=173-460>.

WAC 246-247, “Radiation Protection—Air Emissions,” *Washington Administrative Code*, Olympia, Washington. Available at: <http://apps.leg.wa.gov/WAC/default.aspx?cite=246-247>.

WGA and DOE-CBFO, 2017, *WIPP Transportation Safety Program Implementation Guide*, Western Governors’ Association, Denver, Colorado, and U.S. Department of Energy, Carlsbad Field Office, Carlsbad, New Mexico. Available at: [https://rampac.energy.gov/docs/default-source/doeinfo/attachment-4.pdf?sfvrsn=8ed21f62\\_4](https://rampac.energy.gov/docs/default-source/doeinfo/attachment-4.pdf?sfvrsn=8ed21f62_4).

WGA and DOE-CBFO, 2019, *Regional Protocol for the Safe and Uneventful Transfer of Transuranic Waste*, Western Governors’ Association, Denver, Colorado, and U.S. Department of Energy, Carlsbad Field Office, Carlsbad, New Mexico. Available at: <https://rampac.energy.gov/docs/default-source/doeinfo/attachment-2.pdf?sfvrsn=6>.

## **Appendix C**

### **Descriptions of Low-Level Burial Grounds with Retrievably Stored Waste**

This page intentionally left blank.

## Contents

<b>C1</b>	<b>Descriptions of Low-Level Burial Grounds with Retrievable Stored Waste.....</b>	<b>C-1</b>
C1.1	218-W-4B.....	C-1
C1.2	218-W-4C.....	C-1
C1.3	218-W-3A .....	C-5
C1.4	218-E-12B.....	C-5
<b>C2</b>	<b>References .....</b>	<b>C-5</b>

## Figures

Figure C-1.	Map Locations for Low-Level Burial Grounds 218-W-4B, 218-W-4C, 218-W-3A, and 218-E-12B.....	C-2
Figure C-2.	Trenches in Low-Level Burial Ground 218-W-4B.....	C-3
Figure C-3.	Trenches in Low-Level Burial Ground 218-W-4C.....	C-4
Figure C-4.	Trenches in Low-Level Burial Ground 218-W-3A .....	C-6
Figure C-5.	Trenches in Low-Level Burial Ground 218-E-12B .....	C-7

This page intentionally left blank.

## Terms

LLBG	low-level burial ground
RSW	retrievably stored waste
TRU	transuranic



This page intentionally left blank.

## C1 Descriptions of Low-Level Burial Grounds with Retrievable Stored Waste

Retrievably stored waste (RSW) is/was in designated areas of low-level burial grounds (LLBGs) 218-W-4B, 218-W-4C, 218-W-3A, and 218-E-12B (Figure C-1). These LLBGs are located in the LLBG *Resource Conservation and Recovery Act of 1976* treatment, storage, and/or disposal unit. These LLBGs are also included in the *Comprehensive Environmental Response, Compensation, and Liability Act of 1980* 200-SW-2 Radioactive Landfills Group Operable Unit.

The following sections provide background information on each LLBG.

### C1.1 218-W-4B

The 218-W-4B LLBG is located in the central portion of the 200 West Area of the Hanford Site. The trenches are 175 m (575 ft) long and 3.7 m (12 ft) deep. Figure C-2 shows the trenches in the 218-W-4B LLBG.

The LLBG received miscellaneous radioactive solid waste from the 100, 200, and 300 Areas and offsite shipments from 1967 to 1990. Solid waste at the site consists of rags, paper, cardboard, plastic, pumps, tanks, process equipment, and other miscellaneous high dose rate transuranic (TRU) waste.

The site contains RSW in Trenches T07 and T11 and four alpha caissons. Trench T07 is divided into two sections that were designed to receive RSW. The east end of the trench is referred to as TV7, a diamond-shaped structure consisting of a concrete-lined “V” bottom and metal cover. The cement floor of T07 is a barrier to waste constituent migration, similar to the asphalt pad used in the remainder of Trench T07, except for a known preferred direction of migration along the cement surface.

In the fall of 1972, the first asphalt pad was built in the remainder of Trench T07. Drums were arranged in modules, typically 12 drums wide by 12 drums deep by 4 drums high. Flame-retardant plywood sheets were placed to separate the layers of drums and other packages. When modules were completed, they were covered with tarps and plywood sheets.

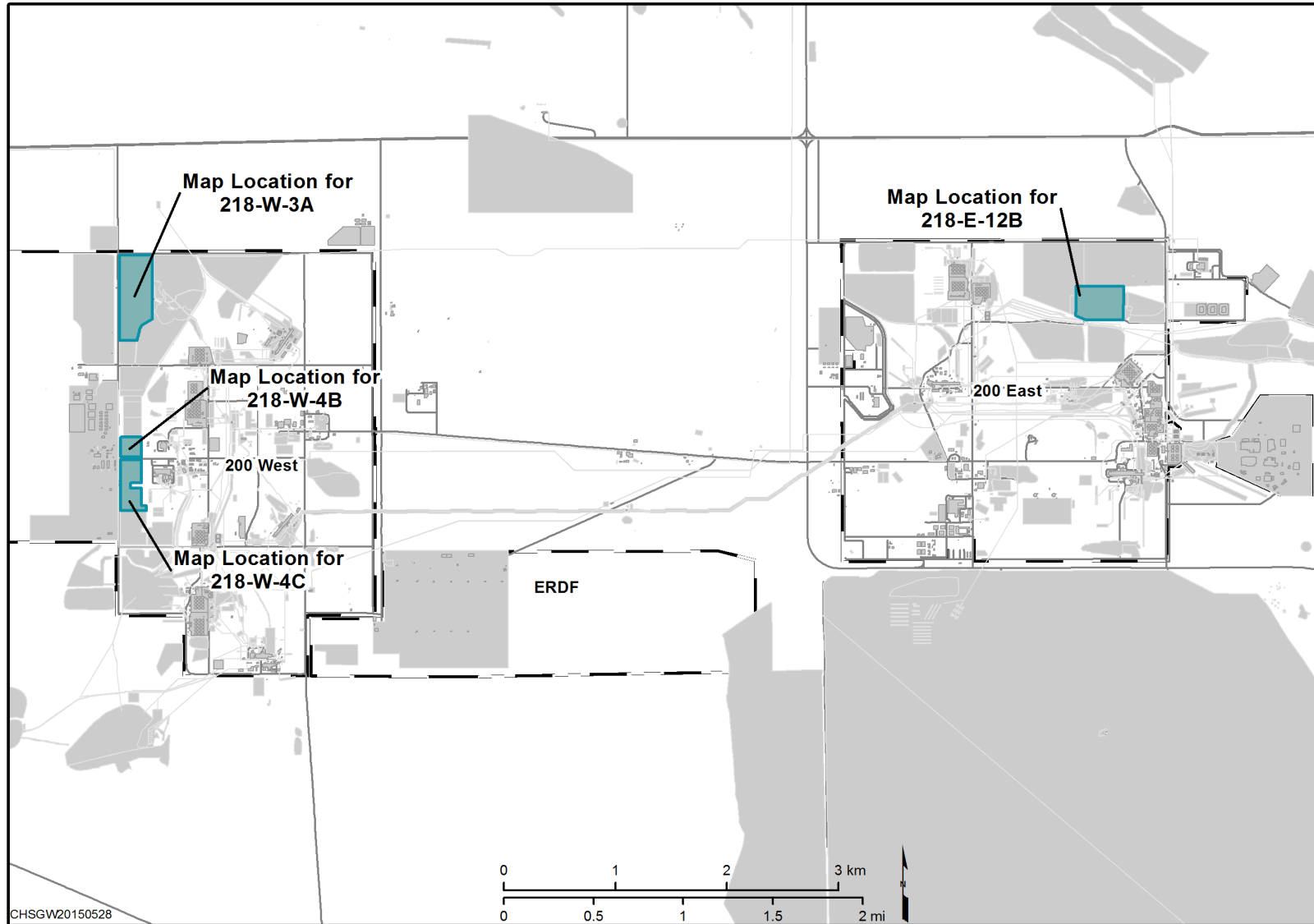
From 1970 to 1972, Trench T11 received waste drums and boxes that were stacked horizontally and “direct buried” in the ground without tarps or plywood to separate the soil overlying the waste. Other containers, such as concrete or steel burial boxes, ductwork, stainless-steel tanks, and a culvert, were placed in this trench.

### C1.2 218-W-4C

The 218-W-4C LLBG is located inside the 200 West Area of the Hanford Site. The trenches ranging from 91 to 219 m (300 to 719 ft) long. Figure C-3 shows the trenches in the 218-W-4C LLBG.

In the 218-W-4C LLBG, Trenches T01, T04, T07, T24, T20, and T29 originally contained RSW. This waste was placed in modules on asphalt pads that contained drums and other packages, including boxes and steel and concrete casks. Drums were arranged in modules, typically 12 drums wide, by 12 drums deep, by 4 drums high. Flame-retardant plywood sheets were placed to separate the layers of drums and other packages. When modules were completed, they were covered with tarps and plywood sheets.

The contact-handled RSW has been removed from this LLBG.



ERDF = Environmental Restoration Disposal Facility

Figure C-1. Map Locations for Low-Level Burial Grounds 218-W-4B, 218-W-4C, 218-W-3A, and 218-E-12B

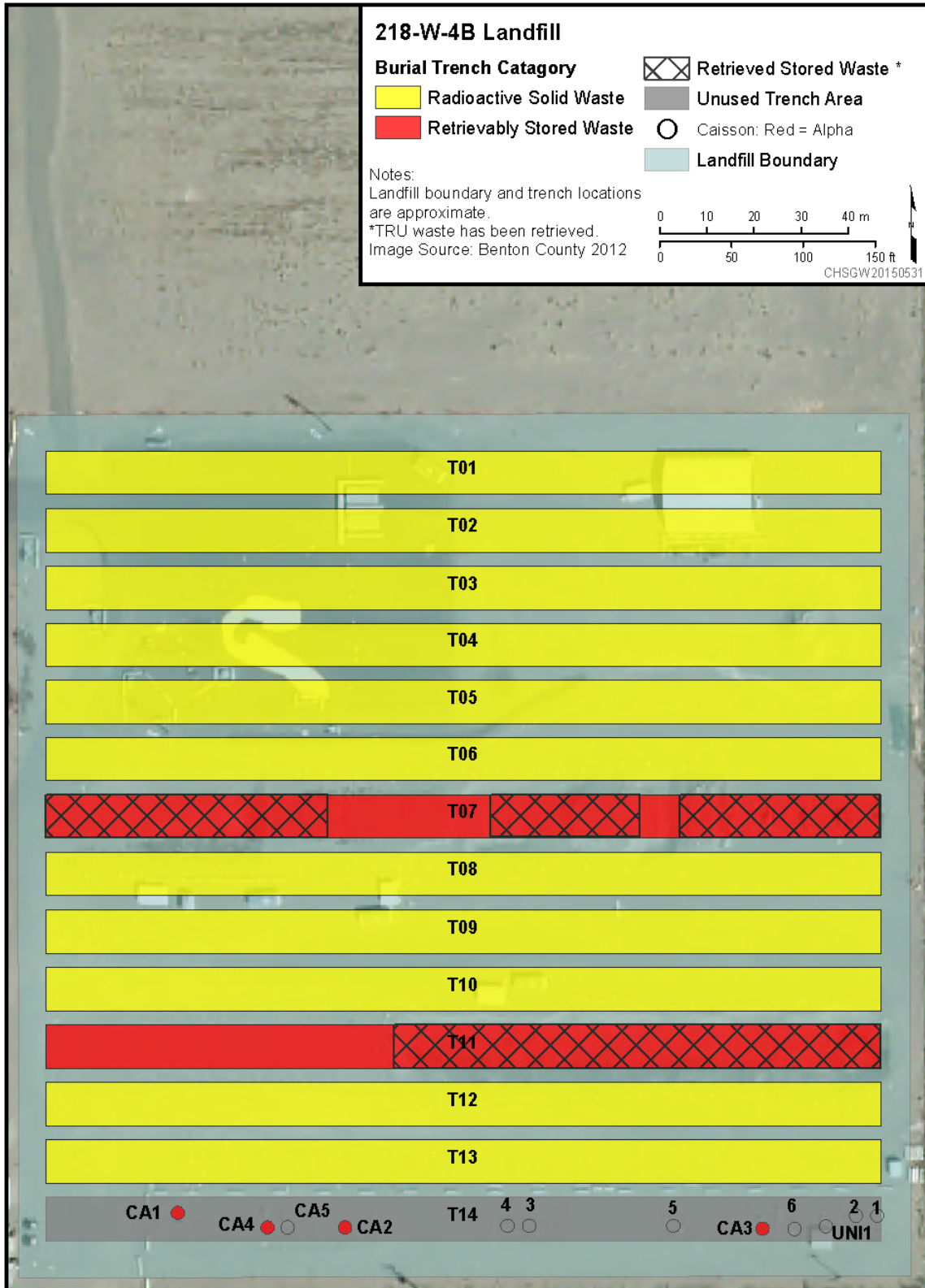


Figure C-2. Trenches in Low-Level Burial Ground 218-W-4B

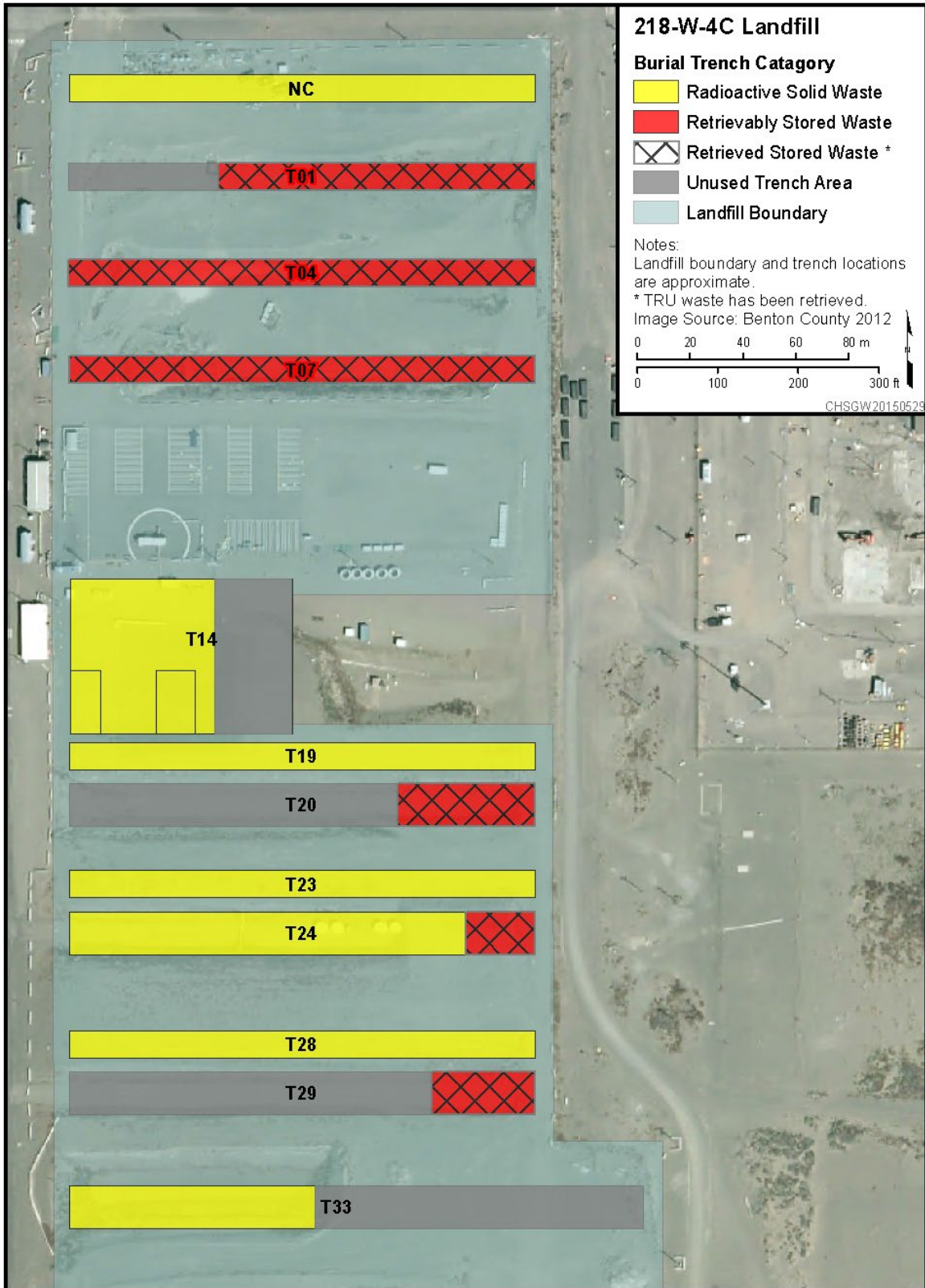


Figure C-3. Trenches in Low-Level Burial Ground 218-W-4C

### **C1.3 218-W-3A**

The 218-W-3A LLBG is located inside the 200 West Area of the Hanford Site. Figure C-4 shows the trenches in the 218-W-3A LLBG. The 218-W-3A LLBG began operating in 1970 and contains solid, dry industrial waste. The RSW is located in 14 trenches: T1, T4, T5, T6, T6S, T8, T9S, T10, T15, T17, T23, T30, T32, and T34. The RSW in Trench 17 has been retrieved.

The 218-W-3A LLBG has no asphalt pads and used only earthen bottom (potentially gravel fill) trenches. Drums were stacked horizontally in earthen trenches from 1970 until approximately 1974. The waste drums were buried directly in the ground without tarps or plywood to separate the soil overlying the waste. Direct contact with the soil increased the probability that containers have corroded and might be breached. The actual date when tarp coverage was initiated has not been established. Later, drums were stacked vertically and placed on plywood, and the completed module waste was covered with nylon tarps and plywood before soil emplacement. RSW in boxes made of various materials (e.g., plywood, concrete, metal, and fiberglass reinforced plywood) were also placed in this burial ground. The 218-W-3A LLBG received RSW until 1987.

### **C1.4 218-E-12B**

The 218-E-12B LLBG is located inside the 200 East Area of the Hanford Site. Figure C-5 shows the trenches in the 218-E-12B LLBG. The RSW is located in two trenches: T17 and T27. The RSW in Trench 27 has been retrieved.

The 218-E-12B LLBG began operating in 1967. The RSW originated from the Plutonium-Uranium Extraction Facility and was placed in 218-E-12B LLBG Trenches T-17 and T-27 between May 1970 and October 1972.

Drums were stacked horizontally in earthen trenches from 1970 to 1972. The waste drums were directly buried in the ground (i.e., not on asphalt pads as they were in the 218-W-4C LLBG) without tarps or plywood to separate the soil overlying the waste. Direct contact with the soil increased the probability that the containers have corroded and might be breached.

## **C2 References**

*Comprehensive Environmental Response, Compensation, and Liability Act of 1980*, 42 USC 9601, et seq., Pub. L. 107-377, December 31, 2002. Available at:  
<https://www.csu.edu/cerc/researchreports/documents/CERCLASummary1980.pdf>.

*Resource Conservation and Recovery Act of 1976*, Pub. L. 94-580, 42 USC 6901, et seq. Available at:  
<https://www.govinfo.gov/content/pkg/STATUTE-90/pdf/STATUTE-90-Pg2795.pdf>.

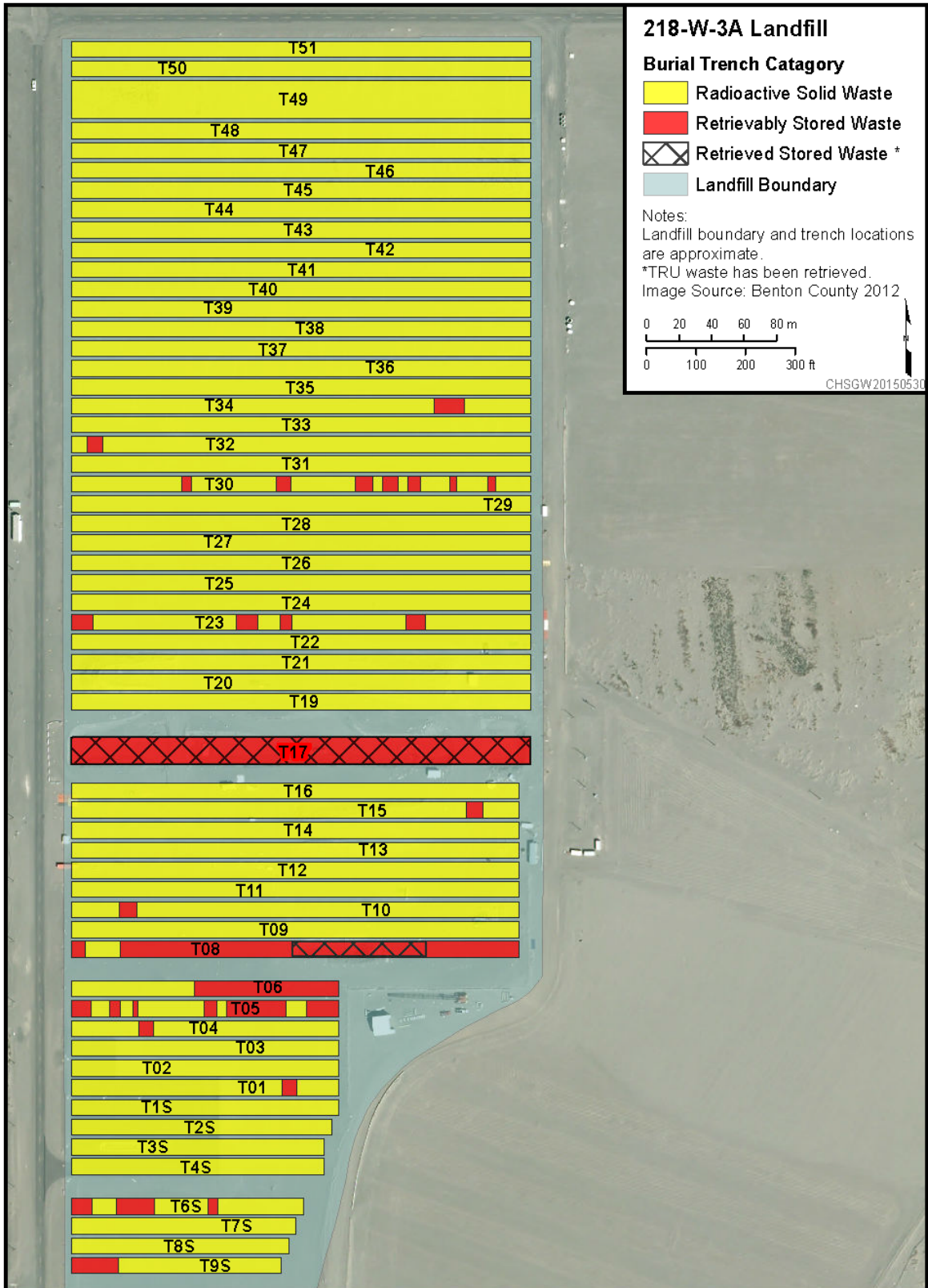


Figure C-4. Trenches in Low-Level Burial Ground 218-W-3A

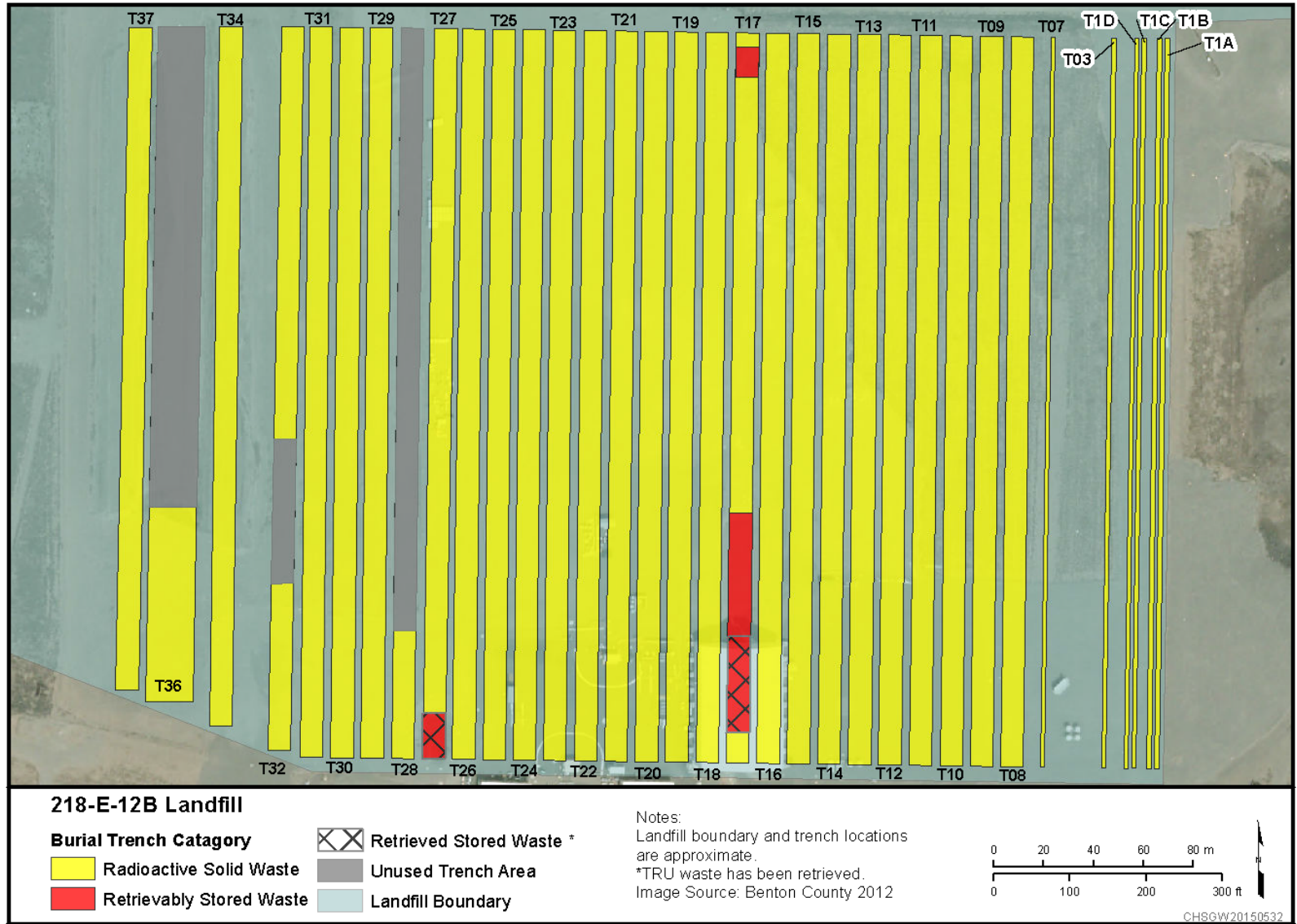


Figure C-5. Trenches in Low-Level Burial Ground 218-E-12B



This page intentionally left blank.

**Appendix D**  
**Basis for Figures**

This page intentionally left blank.

## Contents

<b>D1</b>	<b>Tables .....</b>	<b>D-1</b>
<b>D2</b>	<b>References .....</b>	<b>D-3</b>

### Tables

Table D-1.	Basis for Figure 3-1 .....	D-1
Table D-2.	Basis for Figures 4-4 and 5-1.....	D-2
Table D-3.	Basis for Figure 8-1 .....	D-3

This page intentionally left blank.

## Terms

CCP	Central Characterization Project
CH	contact-handled
FY	fiscal year
PMP	project management plan
RH	remote-handled
RSW	retrievably stored waste
SWITS	Solid Waste Information and Tracking System
TRU	transuranic
TRUM	transuranic mixed
WIPP	Waste Isolation Pilot Plant

This page intentionally left blank.

## D1 Tables

Tables D-1 through D-3 describe the data sources, analytical bases, and underlying assumptions for certain figures included in the main text of this document.

**Table D-1. Basis for Figure 3-1**

<b>Data Source, Analytical Basis, and Underlying Assumptions</b>	
Data Source	<ul style="list-style-type: none"> <li>• Retrievably stored waste (RSW) consists of suspect transuranic mixed (TRUM) waste in the 218-W-3A, 218-W-4B, 218-W-4C, and 218-E-12B Burial Grounds.</li> <li>• The volume of RSW as reported in the Solid Waste Information and Tracking System (SWITS).</li> <li>• Volumes are internal volumes of a waste container (e.g., a 55-gal drum has an internal volume of 0.208 m<sup>3</sup> and an external volume of 0.257 m<sup>3</sup>).</li> <li>• SWITS is a dynamic database and is updated frequently to reflect updated information. As a result, data presented in this revision of the project management plan (PMP) may differ from previous volumes as follows:               <ul style="list-style-type: none"> <li>– The volume of RSW retrieved is based on the actual volume measured when the container is removed from the trench. In some instances, the dimension of a container in SWITS does not represent the actual dimensions of a container retrieved. In these instances, SWITS will be updated with the actual volume removed, and this volume will be used to count towards Ecology et al., 1989, <i>Hanford Federal Facility Agreement and Consent Order</i>, Milestone M-091-49. For example, when the culverts (cylinders) are retrieved, the original volume in SWITS was based on a rectangular container. SWITS was updated with the actual volume of the cylinder.</li> <li>– For failed containers that are repacked in the trench prior to retrieval, the waste volume reported in SWITS will be the volume counted towards the milestone.</li> </ul> </li> </ul>
Analytical Basis	<ul style="list-style-type: none"> <li>• Projected annual volumes are based on the funding profile given in Figure 8-1 in the main text of this document.</li> <li>• Due to rounding, the total may not equal the sum of individual values.</li> </ul>
Underlying Assumptions	<ul style="list-style-type: none"> <li>• The retrieving and characterizing of the remaining RSW is being addressed under Milestone M-091-54 and subsequent milestones (see Chapter 2 in the main text of this document) in order to ultimately meet Milestone M-091-49.</li> <li>• Retrieval will be completed by September 30, 2048, with completion of all the M-091 milestones by September 30, 2050.</li> </ul>



**Table D-2. Basis for Figures 4-4 and 5-1**

<b>Data Source, Analytical Basis, and Underlying Assumptions</b>	
Data Source	<ul style="list-style-type: none"> <li>• Inventory based on SWITS data sorts (report created on June 30, 2021).</li> <li>• The volume of an RSW container is as reported in SWITS; volumes will be adjusted based on actual volumes removed during waste retrieval operations.</li> <li>• Volumes are internal volumes of a waste container (e.g., a 55-gal drum has an internal volume of 0.208 m<sup>3</sup> and an external volume of 0.257 m<sup>3</sup>).</li> </ul>
Analytical Basis	<ul style="list-style-type: none"> <li>• Projected annual volumes are based on the funding profile given in Figure 8-1 in the main text of this document:                             <ul style="list-style-type: none"> <li>– Projections used throughout this PMP are based on level-loaded workoff rates.</li> <li>– For fiscal years (FYs) 2021 to 2031, TRUM waste will be repackaged at a commercial facility to satisfy the M-091-47-T01/02 series (280 m<sup>3</sup> of TRUM waste per annum in the most recent M-091 Milestone series).</li> <li>– Additional necessary repack facilities to process waste containers that could not be shipped offsite will be operational by FY 2030. Processing will be conducted at both offsite and onsite facilities in FY 2030 and FY 2031 to allow flexibility and ensure an adequate stockpile of repackaged TRUM waste is available for the Central Characterization Project (CCP) to continue certifying and building shipments.</li> <li>– Shipping operations will transition from contact-handled (CH) TRUM to remote-handled (RH) TRUM waste during FYs 2039 and 2040.</li> <li>– Number of shipments to the Waste Isolation Pilot Plant (WIPP) is dependent on priority across the U.S. Department of Energy Complex.</li> </ul> </li> <li>• Certified and shipped volume is the treated volume. During repackaging of CH TRUM waste, it has been found that for every four drums repackaged, five drums of certified CH waste are generated, on average, resulting in a factor increase of 1.25. This factor is also assumed valid for noncaisson RH TRUM waste. Volume increases can result from activities such as repackaging performed to generate compliant packages ready for final characterization, certification, and shipment to WIPP.</li> <li>• For caisson RH TRUM waste, the cesium-137 Ci content for each caisson was decayed to January 1, 2042, to calculate the certified volume. Total number of containers (SC30-G1) and their associated volume were determined by assuming each container is filled with 2 Ci of cesium-137 waste.</li> <li>• Due to rounding, the total may not equal the sum of individual values.</li> </ul>
Underlying Assumptions	<ul style="list-style-type: none"> <li>• After retrieval and assay, a significant portion of RSW will be designated as non-transuranic (TRU) waste based on the change in the definition of TRU waste (to 100 nCi/g from the former definition of 10 nCi/g), which occurred after the waste was placed into retrievable storage in the trenches.</li> <li>• Retrieval will be completed by the end of FY 2048.</li> <li>• WIPP will be available to receive shipments of TRUM waste by the end of FY 2027, with shipments from the Hanford Site starting in FY 2028 and continuing through FY 2048.</li> <li>• Shipments of TRUM waste (Milestone M-091-48) will be completed at the end of FY 2050.</li> <li>• Onsite TRUM waste processing will begin in FY 2031 and continue through FY 2047.</li> <li>• Additional capabilities necessary to complete repackaging of TRUM waste and shipments to WIPP are being addressed under Milestone M-091-55 and subsequent milestones (see Chapter 2).</li> <li>• Commercial capability will be available to process a portion of TRUM waste.</li> </ul>

**Table D-3. Basis for Figure 8-1**

Underlying Assumptions
<ul style="list-style-type: none"> <li>• FY 2021 escalated dollars.</li> <li>• Based on DOE/RL-2021-47, <i>2022 Hanford Lifecycle Scope, Schedule and Cost Report</i>. Funding levels are subject to change as planning is refined.</li> <li>• Funding profile for <i>Comprehensive Environmental Response, Compensation, and Liability Act of 1980</i> activities discussed in Chapter 7 is not included.</li> <li>• Cost and/or schedule uncertainty is allocated based on ratio of M-091 versus total Project Baseline Summary values.</li> </ul>

## D2 References

*Comprehensive Environmental Response, Compensation, and Liability Act of 1980*, 42 USC 9601, et seq., Pub. L. 107-377, December 31, 2002. Available at:

<https://www.csu.edu/cerc/researchreports/documents/CERCLASummary1980.pdf>.

DOE/RL-2021-47, 2022, *2022 Hanford Lifecycle Scope, Schedule and Cost Report*, Rev. 0, U.S. Department of Energy, Richland Operations Office, Richland, Washington. Available at:

<https://www.hanford.gov/files.cfm/DOE-RL-2021-47-00.pdf>.

Ecology, EPA, and DOE, 1989, *Hanford Federal Facility Agreement and Consent Order*, 2 vols., as amended, State of Washington, Department of Ecology, U.S. Environmental Protection Agency, and U.S. Department of Energy, Olympia, Washington. Available at:

<http://www.hanford.gov/?page=81>.

This page intentionally left blank.

**Appendix E**  
**Out-Year CERCLA Cleanup Actions**

This page intentionally left blank.

## Contents

<b>E1</b>	<b>Introduction.....</b>	<b>E-1</b>
<b>E2</b>	<b>References.....</b>	<b>E-1</b>

## Table

Table E-1.	Operable Units and Facilities with Potential to Generate Waste with Transuranic Constituents Greater Than 100 nCi/g during CERCLA Cleanup Actions.....	E-3
------------	--	-----

This page intentionally left blank.

**Terms**

CCP	coordinated closure proposal
CERCLA	<i>Comprehensive Environmental Response, Compensation, and Liability Act of 1980</i>
CMS	corrective measures study
Ecology	Washington State Department of Ecology
FS	feasibility study
LLW	low-level waste
MLLW	mixed low-level waste
OU	operable unit
PMR	permit modification request
PUREX	Plutonium Uranium Extraction
RCRA	<i>Resource Conservation and Recovery Act of 1976</i>
RD/RAWP	remedial design/removal action work plan
REDOX	reduction oxidation
RFI	RCRA facility investigation
RI	remedial investigation
SST	single-shell tank
TBD	to be determined
Tri-Party Agreement	<i>Hanford Federal Facility Agreement and Consent Order</i>
TRU	transuranic
TSD	treatment, storage, and disposal



This page intentionally left blank.

## E1 Introduction

Appendix E categorizes the operable units (OUs) and facilities with potential to generate waste with transuranic (TRU) constituents greater than 100 nCi/g during *Comprehensive Environmental Response, Compensation, and Liability Act of 1980* (CERCLA) cleanup actions and the scheduled actions.

## E2 References

- BHI-00176, 1995, *S Plant Aggregate Area Management Study Technical Baseline Report*, Rev. 00, Bechtel Hanford, Inc., Richland, Washington. Available at:  
<http://pdw.hanford.gov/arpir/index.cfm/viewDoc?accession=D198038143>.
- Comprehensive Environmental Response, Compensation, and Liability Act of 1980*, 42 USC 9601, et seq., Pub. L. 107-377, December 31, 2002. Available at:  
<https://www.csu.edu/cerc/researchreports/documents/CERCLASummary1980.pdf>.
- DOE/RL-2003-64, 2004, *Feasibility Study for the 200-TW-1 Scavenged Waste Group, the 200-TW-2 Tank Waste Group, and the 200-PW-5 Fission-Product Rich Waste Group Operable Units*, Draft A, REISSUE, U.S. Department of Energy, Richland Operations Office, Richland, Washington. Available at:  
<http://pdw.hanford.gov/arpir/index.cfm/viewDoc?accession=D4510867>.  
<http://pdw.hanford.gov/arpir/index.cfm/viewDoc?accession=D4511663>.  
<http://pdw.hanford.gov/arpir/index.cfm/viewDoc?accession=D4512590>.  
<http://pdw.hanford.gov/arpir/index.cfm/viewDoc?accession=D4518291>.
- DOE/RL-2004-60, 2016, *200-SW-2 Radioactive Landfills Group Operable Unit RCRA Facility Investigation/Corrective Measures Study/Remedial Investigation/Feasibility Study Work Plan*, Appendix D “Conceptual Site Models,” Rev. 1, U.S. Department of Energy, Richland Operations Office, Richland, Washington. Available at:  
<http://pdw.hanford.gov/arpir/index.cfm/viewDoc?accession=0075983H>.
- DOE/RL-2005-61, 2006, *Remedial Investigation Report for the 200-LW-1 (300 Area Chemical Laboratory Waste Group) and 200-LW-2 (200 Area Chemical Laboratory Waste Group) Operable Units*, Draft A, U.S. Department of Energy, Richland Operations Office, Richland Washington. Available at:  
<http://pdw.hanford.gov/arpir/index.cfm/viewDoc?accession=DA02009333>.  
<http://pdw.hanford.gov/arpir/index.cfm/viewDoc?accession=DA02009967>.
- DOE/RL-2007-02, 2007, *Supplemental Remedial Investigation/Feasibility Study Work Plan for the 200 Areas Central Plateau Operable Units Volume II: Site-Specific Field-Sampling Plan Addenda*, Rev. 0, Vol. II, U.S. Department of Energy, Richland Operations Office, Richland, Washington. Available at:  
<http://pdw.hanford.gov/arpir/index.cfm/viewDoc?accession=DA06294555>.
- DOE/RL-2008-51, 2008, *241-CX Tank System Closure Plan*, Rev. 0, U.S. Department of Energy, Richland Operations Office, Richland, Washington. Available at:  
<https://pdw.hanford.gov/arpir/index.cfm/viewDoc?accession=0812290629>.
- DOE/RL-2009-36, 2010, *BC Cribs and Trenches Excavation-Based Treatability Test Report*, Rev. 1, REISSUE, U.S. Department of Energy, Richland Operations Office, Richland, Washington. Available at: <http://pdw.hanford.gov/arpir/index.cfm/viewDoc?accession=0084533>.

- DOE/RL-2010-49, 2017, *Remedial Investigation/Feasibility Study Work Plan 200-WA-1 and 200-BC-1 Operable Units*, Rev. 0, U.S. Department of Energy, Richland Operations Office, Richland, Washington. Available at: <http://pdw.hanford.gov/arpir/index.cfm/viewDoc?accession=0072177H>.
- DOE/RL-2010-114, 2011, *200-IS-1 Operable Unit Pipeline System Waste Sites RFI/CMS/RI/FS Work Plan*, Draft A, U.S. Department of Energy, Richland Operations Office, Richland, Washington. Available at: <http://pdw.hanford.gov/arpir/index.cfm/viewDoc?accession=0093547>.
- DOE/RL-2011-102, 2016, *Remedial Investigation/Feasibility Study and RCRA Facility Investigation/Corrective Measures Study Work Plan for the 200-DV-1 Operable Unit*, Rev. 0, U.S. Department of Energy, Richland Operations Office, Richland, Washington. Available at: <https://pdw.hanford.gov/document/0075538H>.
- Ecology, EPA, and DOE, 1989, *Hanford Federal Facility Agreement and Consent Order*, 2 vols., as amended, Washington State Department of Ecology, U.S. Environmental Protection Agency, and U.S. Department of Energy, Olympia, Washington. Available at: <http://www.hanford.gov/?page=81>.
- WA7890008967, 2018, *Hanford Facility RCRA Permit Dangerous Waste Portion Change Control Log, PUREX Storage Tunnels Chapter 3.0 Waste Analysis Plan*, Washington State Department of Ecology. Available at: [https://fortress.wa.gov/ecy/nwp/permitting/hdwp/rev/8c/PUREX/PUREX\\_Ch\\_03\\_WAP.pdf](https://fortress.wa.gov/ecy/nwp/permitting/hdwp/rev/8c/PUREX/PUREX_Ch_03_WAP.pdf)
- Resource Conservation and Recovery Act of 1976*, Pub. L. 94-580, 42 USC 6901, et seq. Available at: <https://www.govinfo.gov/content/pkg/STATUTE-90/pdf/STATUTE-90-Pg2795.pdf>.
- RHO-RE-ST-30 P, 1985, *Hanford Defense Waste Disposal Alternatives: Engineering Support Data for the Hanford Defense Waste-Environmental Impact Statement*, Rockwell Hanford Operations, Richland, Washington. Available at: <http://pdw.hanford.gov/arpir/index.cfm/viewDoc?accession=E0003004>.
- WHC-IP-0977, 1994, *Estimation of PUREX Equipment and Materials That are Candidates for Removal and Waste Processing During PUREX Plant Closure*, Westinghouse Hanford Company, Richland Washington. Available at: <https://pdw.hanford.gov/document/AR-04022>.

**Table E-1. Operable Units and Facilities with Potential to Generate Waste with Transuranic Constituents Greater Than 100 nCi/g during CERCLA Cleanup Actions**

Operable Unit/ Site Name	Description	Potential Waste with Transuranic Constituents Greater Than 100 nCi/g			Schedule
		Waste Unit Name	Waste Form	Volume	
200-BC-1	<p>The 200-BC-1 OU includes sites associated with the BC Cribs and Trenches south of the 200 East Area. The 216-B-53A Trench is 18.3 by 3 m (60 by 10 ft) at the base. The site received waste from the liquid release at the Plutonium Recycle Test reactor in the 300 Area during which secondary cooling waste became contaminated with plutonium and mixed fission products. Of all the specific retention trenches in the BC Cribs and Trenches area, only the 216-B-53A Trench is considered to have the potential to contain concentrations of TRU constituents greater than 100 nCi/g.</p> <p><b>References:</b> DOE/RL-2009-36, <i>BC Cribs and Trenches Excavation-Based Treatability Test Report</i>, Rev. 1. DOE/RL-2010-49, <i>Remedial Investigation/Feasibility Study Work Plan 200-WA-1 and 200-BC-1 Operable Units</i>, Rev. 0.</p>	216-B-53A, Trench	Soil, Rock, Gravel	38 m <sup>3</sup>	<p><i>M-015-91B</i>: Submit FS Report(s) and Proposed Plan(s) for the 200-BC-1/ 200-WA-1 OUs (200 West Inner Area) by TBD.</p> <p><i>M-016-00</i>: Complete remedial actions for all non-tank farm and non-canyon OUs in accordance with schedules established in approved RD/RAWPs by 9/30/2042.</p>
200-SW-2	<p>There are 24 landfills assigned to the 200-SW-2 OU. These landfills consist of excavated trenches that received either LLW or MLLW. Most of the waste disposed in the 200-SW-2 landfills originated from the processing facilities located in the 200 East and 200 West Areas, with some of the waste originating from the 100 and 300 Areas, as well as from offsite sources. There are collocated waste sites within the footprint of several 200-SW-2 landfills. These waste sites include three ponds, a burn pit, and a ditch.</p> <p>Before 1970, LLW was disposed in the same landfill trenches as waste that contained TRU elements and mixed fission products. After 1970, waste that was designated as TRU waste was segregated in either specified low-level burial ground trenches or underground concrete caissons within the landfills for future retrieval. Retrieval of this TRU waste (currently known as retrievably stored suspect TRU waste) is accomplished under Tri-Party Agreement (Ecology et al., 1989) Milestone M-091-49, as discussed in Chapter 3 of this Project Management Plan. Prior to 1960, detailed inventory records were not maintained, and specific information about the early landfills often is not available.</p> <p><b>References:</b> DOE/RL-2004-60, <i>200-SW-2 Radioactive Landfills Group Operable Unit RCRA Facility Investigation/Corrective Measures Study/Remedial Investigation/Feasibility Study Work Plan</i>, Rev. 1. DOE/RL-2004-60, Appendix D, "Conceptual Site Models," Rev. 1 provides retrievably stored waste volumes remaining to be retrieved for 218-E-12B, 218-W-3A, and, 218-W-4B. Ecology et al., 1989, <i>Hanford Federal Facility Agreement and Consent Order</i>.</p>	218-E-12B, Landfill	Debris	303 m <sup>3</sup>	<p><i>M-015-93B</i>: Submit RFI/CMS, RI/FS Report, and Proposed Corrective Action Decision/Proposed Plan for the 200-SW-2 OU by TBD.</p> <p><i>M-016-00</i>: Complete remedial actions for all non-tank farm and non-canyon OUs in accordance with schedules established in approved RD/RAWPs by 9/30/2042.</p>
		218-E-5, Landfill		140 m <sup>3</sup>	
		218-W-1, Landfill		7,100 m <sup>3</sup>	
		218-W-2, Landfill		8,200 m <sup>3</sup>	
		218-W-2A, Landfill		280 m <sup>3</sup>	
		218-W-3, Landfill		5,900 m <sup>3</sup>	
		218-W-3A, Landfill		930 m <sup>3</sup>	
		218-W-4A, Landfill		12,000 m <sup>3</sup>	
		218-W-4B, Landfill		1,564 m <sup>3</sup>	
		<b>Total</b>			
200-WA-1	<p>200 West Inner Area (200-WA-1) is defined as other sites in the 200 West Area not included in 200-CR-1; 200-IS-1; 200-PW-1,-6; 200-BC-1; 200-CW-5; or 200-SW-2.</p> <p><b>References:</b> DOE/RL-2003-64, <i>Feasibility Study for the 200-TW-1 Scavenged Waste Group, the 200-TW-2 Tank Waste Group, and the 200-PW-5 Fission-Product Rich Waste Group Operable Units</i>, Draft A. DOE/RL-2005-61, <i>Remedial Investigation Report for the 200-LW-1 (300 Area Chemical Laboratory Waste Group) and 200-LW-2 (200 Area Chemical Laboratory Waste Group) Operable Units</i>, Draft A. DOE/RL-2007-02, <i>Supplemental Remedial Investigation/Feasibility Study Work Plan for the 200 Area Central Plateau Operable Units Volume II: Site-Specific Field-Sampling Plan Addenda</i>, Rev. 0. Table 2-15 in RHO-RE-ST-30 P, <i>Hanford Defense Waste Disposal Alternatives: Engineering Support Data for the Hanford Defense Waste-Environmental Impact Statement</i>. DOE/RL-2010-49, <i>Remedial Investigation/Feasibility Study Work Plan 200-WA-1 and 200-BC-1 Operable Units</i>, Rev. 0.</p>	216-S-1, & -2, Crib	Soil, Gravel, Rock	1,700 m <sup>3</sup>	<p><i>M-015-91B</i>: Submit FS Report(s) and Proposed Plan(s) for the 200-BC-1/ 200-WA-1 OUs (200 West Inner Area) by TBD.</p> <p><i>M-016-00</i>: Complete remedial actions for all non-tank farm and non-canyon OUs in accordance with schedules established in approved RD/RAWPs by 9/30/2042.</p>
		216-Z-7, Crib		590 m <sup>3</sup>	
		241-T-361	Sludge/Liquid	88 m <sup>3</sup>	

**Table E-1. Operable Units and Facilities with Potential to Generate Waste with Transuranic Constituents Greater Than 100 nCi/g during CERCLA Cleanup Actions**

Operable Unit/ Site Name	Description	Potential Waste with Transuranic Constituents Greater Than 100 nCi/g			Schedule
		Waste Unit Name	Waste Form	Volume	
200-DV-1	<p>The 200-DV-1 OU includes waste sites with deep vadose zone contamination that may be a potential threat to groundwater and cannot be remediated using typical surface techniques (e.g., excavation and capping). The vadose zone is defined as the unsaturated region of soil between the ground surface and the water table.</p> <p><b>References:</b> Estimated volumes were taken from Table 2-15 in RHO-RE-ST-30 P, <i>Hanford Defense Waste Disposal Alternatives: Engineering Support Data for the Hanford Defense Waste-Environmental Impact Statement</i>. DOE/RL-2011-102, <i>Remedial Investigation/Feasibility Study and RCRA Facility Investigation/Corrective Measures Study Work Plan for the 200-DV-1 Operable Unit</i>, Rev. 0.</p>	216-T-3, Injection/Reverse Well	Soil, Rock, Gravel	<10 m <sup>3</sup>	<p><i>M-015-110B</i>: Submit CMS, FS, and Proposed Plan/Proposed Corrective Action Decision for 200-DV-1 by TBD. <i>M-016-00</i>: Complete remedial actions for all non-tank farm and non-canyon OUs in accordance with schedules established in approved RD/RAWPs by 9/30/2042.</p>
		216-B-5, Injection/Reverse Well		60 m <sup>3</sup>	
		216-B-7A & -7B, Crib		430 m <sup>3</sup>	
		216-T-32, Crib		460 m <sup>3</sup>	
		216-T-18, Crib		590 m <sup>3</sup>	
		216-T-5, Trench		TBD	
		216-T-7, Tile Field		TBD	
		216-T-6, Crib		290 m <sup>3</sup>	
		<b>Total</b>			
200-IS-1	<p>The 200-IS-1 OU includes pipelines, diversion boxes, catch tanks, related structures, and RCRA TSD tanks. Potential source of TRU waste is residual sludge/liquid within the structures. Associated pipelines and structures (e.g., diversion boxes, catch tanks, vaults, and storage tanks) are expected to be LLW. The 241-CX-72 Storage Tank is located at the former Hot Semiworks Facility, east of B Plant in the 200 East Area.</p> <p><b>Reference:</b> DOE/RL-2008-51, <i>241-CX Tank System Closure Plan</i>, Rev. 0.</p>	241-CX-72, Storage Tank	Sludge/Liquid	9 m <sup>3</sup>	<p><i>M-015-92C</i>: Submit RFI/CMS, RI/FS Report, and Proposed Corrective Action Decision/Proposed Plan for the 200-IS-1 OU by TBD. <i>M-016-00</i>: Complete remedial actions for all non-tank farm and non-canyon OUs in accordance with schedules established in approved RD/RAWPs by 9/30/2042. <i>M-037-24</i>: Submit a CCP as a PMR for the TSD units: 241-CX Tank System and Inactive SST Components (200 East/West) by TBD. <i>M-015-112</i>: Submit Draft B 200-IS-1 RFI/CMS/RI/FS Work Plan to Ecology with Schedule Dates by TBD.</p>
200-EA-1	<p>200 East Inner Area (200-EA-1) and 200-IS-1 sites not included in one of the canyon OUs will remain in the 200-IS-1 OU. Other waste sites not included in 200-CS-1, 200-CP-1, 200-PW-3, or 200-SW-2 are reassigned to the new 200-EA-1 OU.</p> <p>The 200-EA-1 OU includes the 241-B-361 Settling Tank, which was used for waste originating in B Plant.</p> <p><b>References:</b> DOE/RL-2010-114, <i>200-IS-1 Operable Unit Pipeline System Waste Sites RFI/CMS/RI/FS Work Plan</i>, Draft A. Volume of residual sludge in 241-B-361 is from Table 2-3 in DOE/RL-2003-64, <i>Feasibility Study for the 200-TW-1 Scavenged Waste Group, the 200-TW-2 Tank Waste Group, and the 200-PW-5 Fission-Product Rich Waste Group Operable Units</i>, Draft A. RHO-RE-ST-30 P, <i>Hanford Defense Waste Disposal Alternatives: Engineering Support Data for the Hanford Defense Waste-Environmental Impact Statement</i>.</p>		Sludge/Liquid		<p><i>M-015-92B</i>: Submit RFI/CMS, RI/FS Report, and Proposed Corrective Action Decision/Proposed Plan for the 200-EA-1 OU (Central Plateau 200 East Inner Area) by TBD. <i>M-016-00</i>: Complete remedial actions for all non-tank farm and non-canyon OUs in accordance with schedules established in approved RD/RAWPs by 9/30/2042.</p>
		241-B-361, Settling Tank		180 m <sup>3</sup>	
		Diversion Boxes, Catch Tanks		TBD	
<b>Total</b>			<b>180 m<sup>3</sup></b>		

**Table E-1. Operable Units and Facilities with Potential to Generate Waste with Transuranic Constituents Greater Than 100 nCi/g during CERCLA Cleanup Actions**

Operable Unit/ Site Name	Description	Potential Waste with Transuranic Constituents Greater Than 100 nCi/g			Schedule
		Waste Unit Name	Waste Form	Volume	
200-CP-1, PUREX Tunnel #1 and Tunnel #2	<p>The PUREX Plant consists of the main fuels reprocessing building (202A) and several ancillary buildings. WHC-IP-0977 (Section 4.0) describes the many process vessels, chemical storage tanks, and other types of equipment that are potential candidates for removal and processing as solid waste. The volume of potential solids waste is estimated at 9,660 m<sup>3</sup> (341,140 ft<sup>3</sup>) of which it is estimated that 8 percent is contaminated with TRU constituents that exceed 100 nCi/g.</p> <p>The PUREX Plant is designated as a Tier 1 facility. Final disposition to be addressed using the CERCLA remedial action coordinated with RCRA closure. Completion schedules to be established with the RI/FS work plans and RD/RAWPs and closure conditions/schedules established in the Hanford Facility Dangerous Waste Permit.</p> <p><b>References:</b>                      WA7890008967, <i>Hanford Facility RCRA Permit Dangerous Waste Portion Change Control Log PUREX Storage Tunnels CHAPTER 3.0 WASTE ANALYSIS PLAN</i>. The two PUREX tunnels (Tunnel #1 and Tunnel #2) were used for interim storage to shelter failed or obsolete process equipment. The process equipment, bulky and highly radioactive, could not be removed from the PUREX Plant. The tunnels were both filled with engineered grout to improve tunnel stability, provide additional radiological protection, and increase durability.                      WHC-IP-0977, <i>Estimation of PUREX Equipment and Materials That are Candidates for Removal and Waste Processing During PUREX Plant Closure</i>.                      Tunnel #1 is filled with eight railcars that contain approximately 590 m<sup>3</sup> (20,835 ft<sup>3</sup>) of unsegregated radioactive waste. Section 3.1 of WHC-IP-0977 describes the equipment stored in Tunnel #1. It is estimated that approximately 45 percent of the waste could be contaminated with TRU constituents that exceed 100 nCi/g, while the remainder is LLW.                      Tunnel #2, which currently holds 28 railcars, contains approximately 2,200 m<sup>3</sup> (78,000 ft<sup>3</sup>) of unsegregated radioactive waste. Approximately 35 percent of the unsegregated radioactive waste is estimated to be contaminated with TRU constituents that exceed 100 nCi/g.</p>	PUREX Complex	Debris	770 m <sup>3</sup>	<p><i>M-085-00</i>: Complete response actions for the canyon facilities/associated past-practice waste sites, other Tier 1 Central Plateau facilities not covered by existing milestones, and Tier 2 Central Plateau facilities by TBD.</p>
		PUREX Tunnels		1,030 m <sup>3</sup>	
		<b>Total</b>			
200-CR-1	<p>The REDOX Facility, also called the 202-S Process Canyon Building or S Plant, is a chemical separation facility constructed in 1952 to employ an advanced organic solvent extraction process as a replacement for the B and T Plants. Irradiated rods were transferred to the REDOX Facility where plutonium was extracted and transferred as plutonium nitrate to Z Plant for final processing. As with other canyon buildings, the REDOX Facility is constructed entirely of concrete, and its process equipment is contained in cells.</p> <p>The REDOX Canyon and Service Facility is designated as a Tier 1 facility. Final disposition of the REDOX Facility is to be addressed using CERCLA remedial action. Completion schedules are to be established with RI/FS work plans and RD/RAWPs.</p> <p><b>Reference:</b>                      BHI-00176, <i>S Plant Aggregate Area Management Study Technical Baseline Report</i>, Rev. 00.</p>	REDOX	Debris	~1,200 m <sup>3</sup>	<p><i>M-085-00</i>: Complete response actions for the canyon facilities/associated past-practice waste sites, other Tier 1 Central Plateau facilities not covered by existing milestones, and Tier 2 Central Plateau facilities by TBD.</p> <p><i>M-085-90</i>: Submit RI/FS Work Plan for 200-CR-1 by 9/30/2026.</p>

Notes: All terms used in in this table are defined in the Terms list page of the front matter. Complete citations for documents referenced in Table E-1 are provided in Chapter E2.

This page intentionally left blank.