

Christi Moody

I oppose Hudbay Minerals Inc., Class II Air Permit based on additional concerns. Pima County constantly receives air quality alerts asking citizens to avoid various activities and to stay indoors if you have pulmonary challenges.

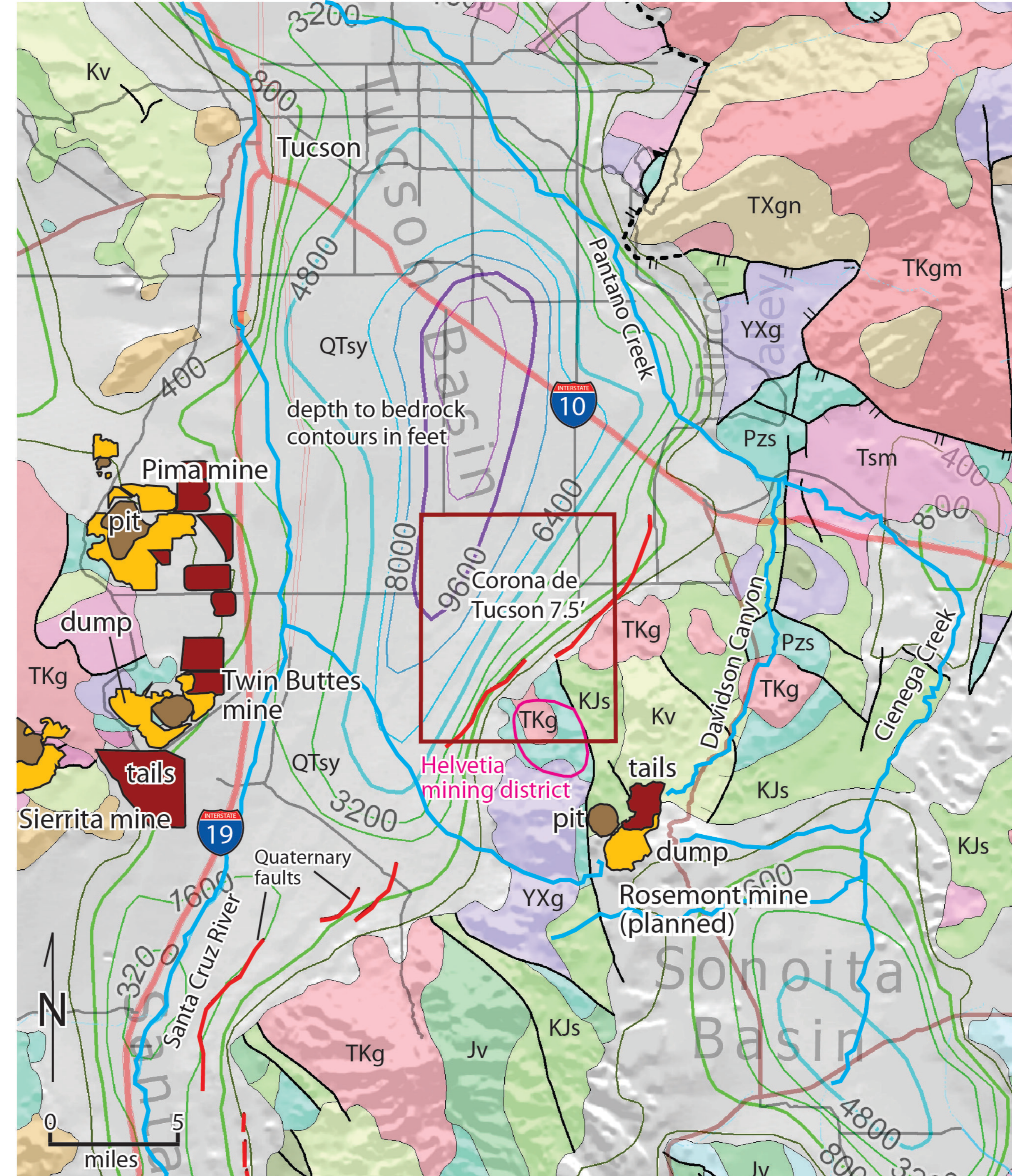
Heavy clouds of dust form during mining operations. Blasting alone in the mining process is an enormous piece of the problem. The explosives used in blasting release fumes rich in smog and acid rain-producing gases like highly toxic nitrogen dioxide. Furthermore, respirable particulate matters and suspended particulate matters are pollutant products through open-pit mining.

Hudbay advertises concerns for communities and the environment using industry best practices. The permit as written does not reflect current industry best practices, for example, the company should use Battery-electric haul trucks to reduce their carbon footprint.

Habitats of diverse species in the environment are destroyed as a result of the processes involved in open pit mining. Open-pit mines are excavated directly into mountain tops and as a result vegetation in that region is lost, the topsoil rocks are gone and the habitat is destroyed. Most of the mining sites are densely populated areas for biological diverse species. This poses a serious threat to the existence and the sustainability of the species. While mining is vital for our economy, the effects of open-pit mining still raise questions about environmental conservation. In mining activities, species go extinct as a result of huge land degradation and alteration. The pollutants produced during the process cause suffocation to the organisms present in that landmass.

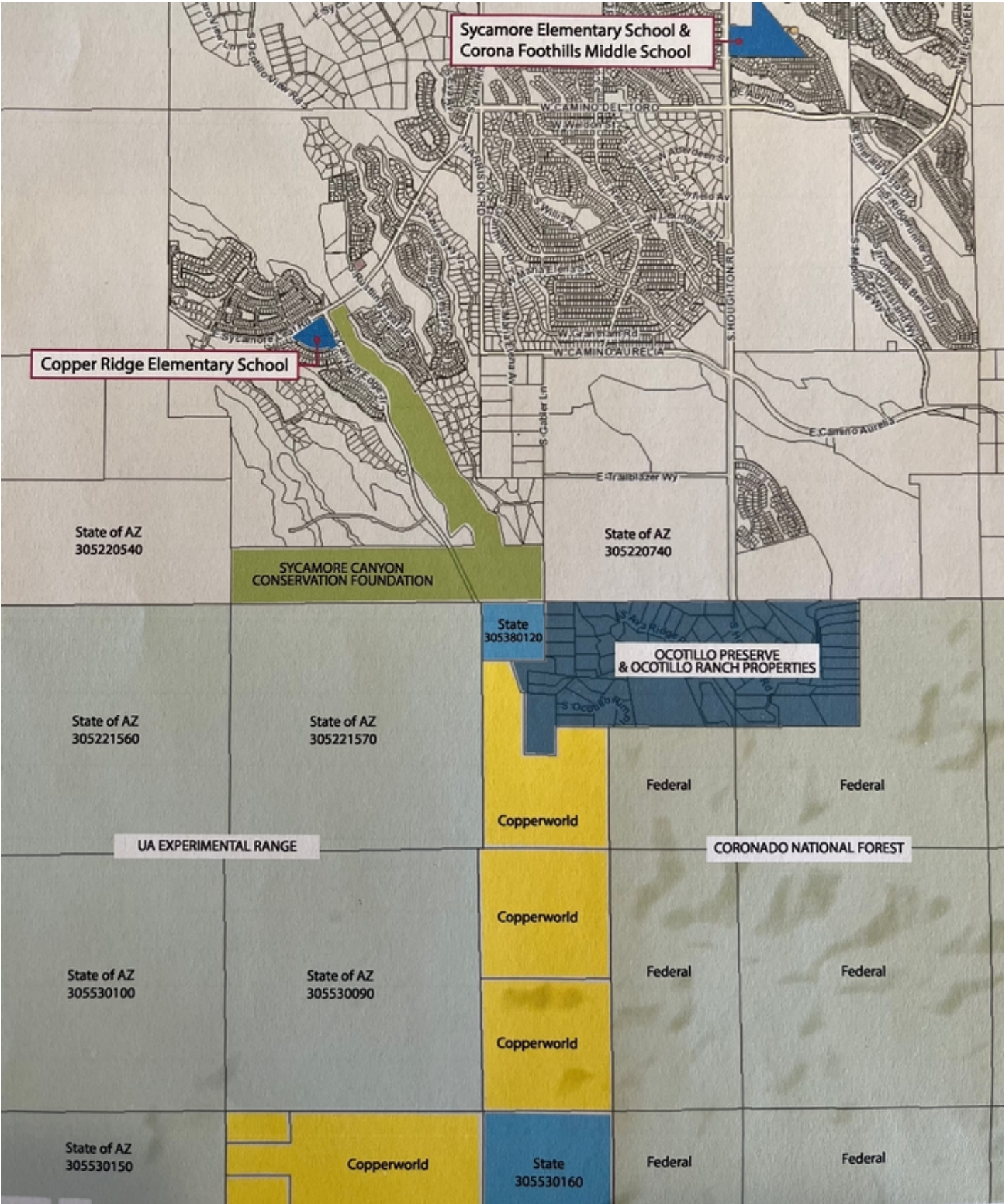
Open pit mines use very expensive machinery to excavate mineral ores. To make the most out of these machines, Hudbay plans to operate 24/7 year round. The machines used for mining produce so much noise, causing untold noise pollution to the people and wildlife living near the mine sites. In addition, since the mining process produces huge clouds of dust that inhibit a clear view, it leads to light pollution in the areas.

Mining activities are unsustainable not only because they exploit non-renewable resources, but also because they leave behind their destruction of the environment and society. In closing I am providing additional maps to show the proximity of the mine to Corona de Tucson since Hudbay cuts theirs off just before the community boundary.



QTsy - Quaternary to upper Tertiary sedimentary units
 Tsm - Middle Tertiary sedimentary rocks
 TKg - Tertiary to Cretaceous granitic rocks
 TKgm - Tertiary to Cretaceous muscovite-bearing granitic rocks
 Kv - Cretaceous volcanic rocks
 KJs - Cretaceous to Jurassic volcanic rocks

Jv - Jurassic volcanic rocks
 Pzs - Paleozoic sedimentary rocks
 YXg - Proterozoic granitic rocks
 TXgn - Tertiary to Proterozoic granitic and gneissic rocks



Three maps show the HUGE footprint of the Hubday mines in our mountains

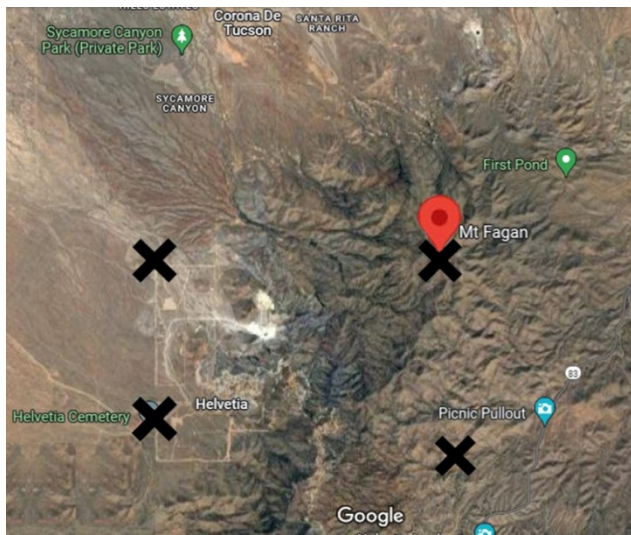
June 29, 2024

Hudbay Minerals Corporation, a multinational company based in Toronto, Canada, is preparing to carve, dig, and blast an extensive mining operation into our northern Santa Rita Mountains.

This following is a standard “terrain” map of the Santa Rita Mountains. Many Arizona residents think of the Santa Rita Mountains as the landmass around Mt. Wrightson and Mt. Hopkins in the southern part of the mountain range. But the mountains actually stretch much farther north toward Mt. Fagan.



In these maps, four X’s have been printed on landmarks around the northern Santa Ritas: Mt. Fagan, Rosemont Junction (south of Mt. Fagan), the historic Helvetia Cemetery (near the limestone mine), and a point straight north of Helvetia Cemetery. Within these four X’s are our northern mountains.



In the following map, a USGS Topographic Map overlays the same northern part of the mountain range. The red lines outline the Hubday Corporation’s holdings. Note the X’s and the pointer on Mt. Fagan. The rounded shape outlined in black is one of the four open pits that are planned. The dark line that runs

north from the biggest pit, snaking below the “F” shape, down to the Helvetia Cemetery, and then to the northwest across reserved desert land is a “haul road” that will be busy with heavy truck traffic.

